

13 SECTION 19 TOWN 04 RANGE

ADAMS COUNTY

COUNTY CORNER NO: 73

ROMPORTOL ID: 41904130000

PUBLIC LAND SURVEY MONUMENT RECORD

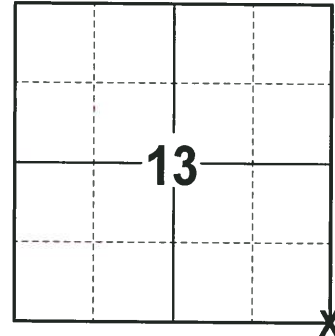
TYPE OF MONUMENT: HARRISON (BROKEN-TOP)
 ADAMS COUNTY COORDINATES, NAD 83 (2007)

N. 271661.720

E. 494677.090

ELEVATION- DATUM

FIELD WORK DATE: 1/18/2018



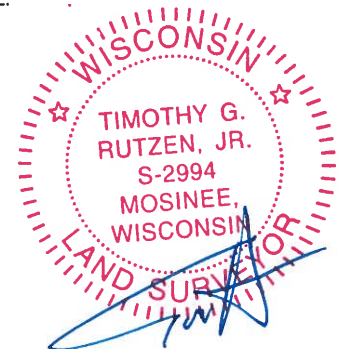
BASIS FOR MONUMENT LOCATION

1977 - PLS 878 EXCAVATED WITH A BACKHOE AND FOUND NOTHING. CORNER WAS CALCULATED FROM 2" CAPPED WITNESS MONUMENTS OF UNKNOWN ORIGIN. LOCATION VERIFIED BY EDM TRAVERSE. TIED OUT CORNER.

2018 - PLS 2994 FOUND HARRISON MONUMENT WITH A BROKEN-TOP 24" BELOW THE ROAD SURFACE AND 2 TIES. THE MONUMENT AGREES WITH THE EXISTING TIES. ACCEPTED THE HARRISON MONUMENT WITH A BROKEN-TOP AS THE CORNER LOCATION. SET 2 NEW TIES AND MEASURED TO THE TIES.

LOCATION
 (INDICATE CORNER BY "X")

SEAL:



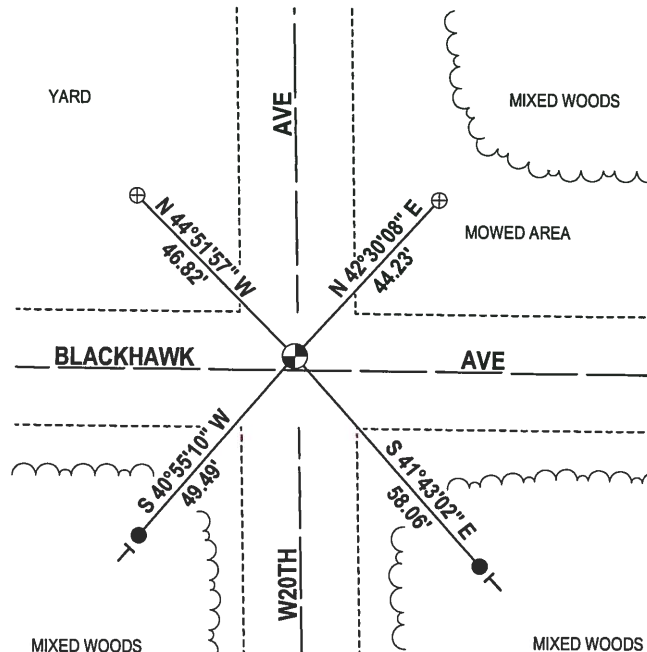
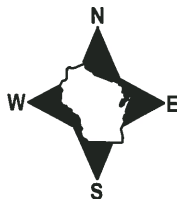
DATA SHOWN HERE ON THIS TIE SHEET IS CORRECT AND COMPLETE TO THE BEST OF MY KNOWLEDGE AND BELIEF.

PROFESSIONAL LAND SURVEYOR

DATE 3-1-18

- TIE SKETCH

NOTE: THE CORNER FALLS 3± NORTH OF THE CENTERLINE OF BLACKHAWK AVE.



- 3/4" x 18" IRON REBAR SET, 1.50#/FT
- ⊕ 2-3/8" O.D. IRON PIPE FOUND
- ⊙ HARRISON (BROKEN-TOP) FOUND
- VINYL "T" POST

ADAMS COUNTY

Survey Monument Record

TYPE OF MONUMENT: 4" Harrison

STATE PLANE COORDINATES: N _____

E _____

ELEVATION — M.S.L. DATUM: _____

THETA ANGLE: _____

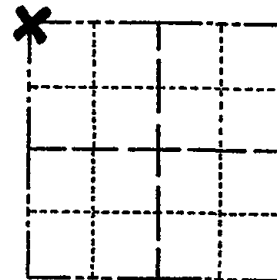
FIELD BOOK: 38 PAGE 39

CORNER NO. 61

SECTION 19

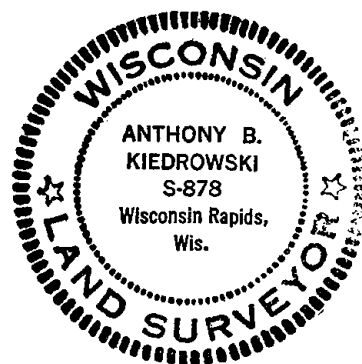
TOWN 19

RANGE 5



LOCATION
(Indicated by 'X')

SEAL:



BASIS FOR MONUMENT LOCATION

(Use reverse side if necessary)

Show info such as: History of corner, with reference to Vol. and pg, dates, surveyor; exact description of monument replaced; if location computed, by taped or EDM traverse; landowner remarks, etc.

Excavated with backhoe. Found Nothing. Corner set from 2" capped witness monuments of unknown origin. Location verified by EDM traverse.

Ok 4-2-84 SS-DK
" 11-29-88 SS

CERTIFIED CORRECT:

Anthony B. Kiedrowski

Registered Land Surveyor

DATE: 5/4/77

OK 3-14-79 RN-SS

OK 2-11-94 GR-JG

OK 1-26-99 JG

2-GONE, 2-NEW, TOP BROKEN OFF, 1-5-04-JG

TIE SKETCH

(Show at least four ties)

OK 1-26-09 SS-MS

2" Capped Witness
Pipe-stamped
44'

2" Capped Witness
Pipe-stamped
42.2'

