

## PUBLIC LAND SURVEY MONUMENT RECORD

TYPE OF MONUMENT: HARRISON  
 ADAMS COUNTY COORDINATES, NAD 83 (2005)

N. 271657.446

E. 498915.611

ELEVATION- \_\_\_\_\_ DATUM \_\_\_\_\_

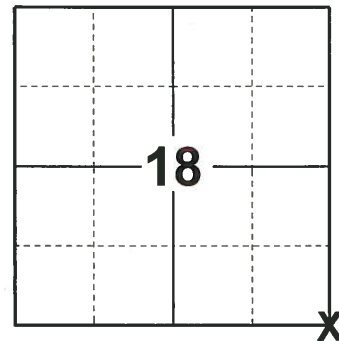
FIELD WORK DATE: 10/21/2019

### BASIS FOR MONUMENT LOCATION

1977 - PLS 878 EXCAVATED WITH A BACKHOE AND FOUND A 12"X12"X12" SOFT SANDSTONE WITH A 3/4" IRON PIPE DRIVEN INTO IT. HE LOWERED THE STONE AND SET A HARRISON MONUMENT ON TOP OF IT.

2010 - PLS 1473 FOUND A HARRISON MONUMENT BURIED 1.4' UNDER THE SURFACE AND SET A 5" GALVANIZED LANDSCAPING SPIKE OVER THE TOP OF IT.

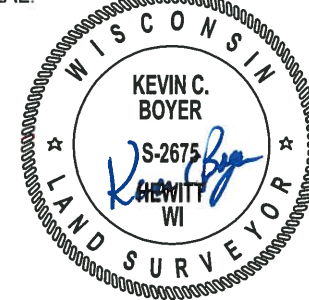
2019 - PLS 2675 FOUND A SPIKE IN THE ROAD SURFACE, 3 TIES, 3 PROPERTY IRONS AND 1 WITNESS. REMOVED THE SPIKE AND FOUND A HARRISON MONUMENT 13" BELOW THE ROAD SURFACE. THE MONUMENT AGREES WITH THE EXISTING TIES AND WITNESS. ACCEPTED THE HARRISON MONUMENT AS THE CORNER LOCATION. RE-MEASURED TO THE EXISTING TIES, PROPERTY IRONS AND WITNESS.



LOCATION

(INDICATE CORNER BY "X")

SEAL:



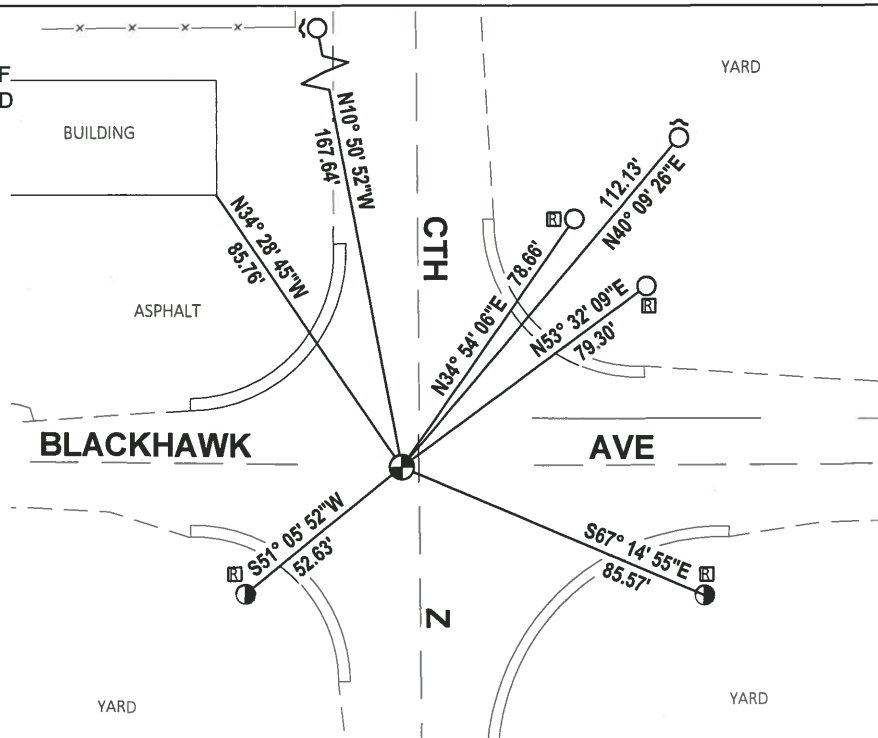
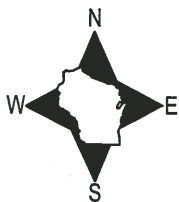
DATA SHOWN HERE ON THIS TIE SHEET IS CORRECT AND COMPLETE TO THE BEST OF MY KNOWLEDGE AND BELIEF.

PROFESSIONAL LAND SURVEYOR

DATE 11/25/19

### TIE SKETCH

NOTE: THE CORNER FALLS 0.5' ± SOUTH OF THE CENTERLINE OF BLACKHAWK AVE AND 4' ± WEST OF THE CENTERLINE OF CTH Z.



- FOUND 3/4" IRON ROD
- SET 3/4" X 18" IRON REBAR, 1.50#/FT
- ⊙ FOUND 5/8" IRON ROD
- ⊕ FOUND HARRISON MONUMENT
- ↗ STEEL FENCE POST
- ⊠ RIGHT-OF-WAY GUARD POST

