

PUBLIC LAND SURVEY MONUMENT RECORD

TYPE OF MONUMENT: HARRISON
 ADAMS COUNTY COORDINATES, NAD 83 (2005)

N. 271657.065

E. 501570.162

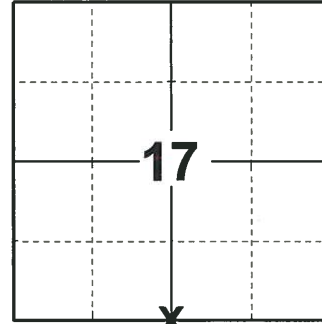
ELEVATION- _____ DATUM _____

FIELD WORK DATE: 10/17/2019

BASIS FOR MONUMENT LOCATION

1977 - PLS 878 EXCAVATED WITH BACKHOE. FOUND 5"X6"X13" SOMEWHAT POINTED SANDSTONE. LOWERED STONE AND SET HARRISON MONUMENT ON TOP. NO RESURVEY RECORDS. LOCATION VERIFIED BY EDM TRAVERSE BY PAUL CARROLL, RLS.

2019 - PLS 2675 FOUND HARRISON 6" BELOW THE ROAD SURFACE AND 1 TIE. THE MONUMENT AGREES WITH THE TIE. ACCEPTED THE HARRISON AS THE CORNER LOCATION. SET 3 NEW TIES AND MEASURED TO THE EXISTING TIE.



LOCATION

(INDICATE CORNER BY "X")

SEAL:



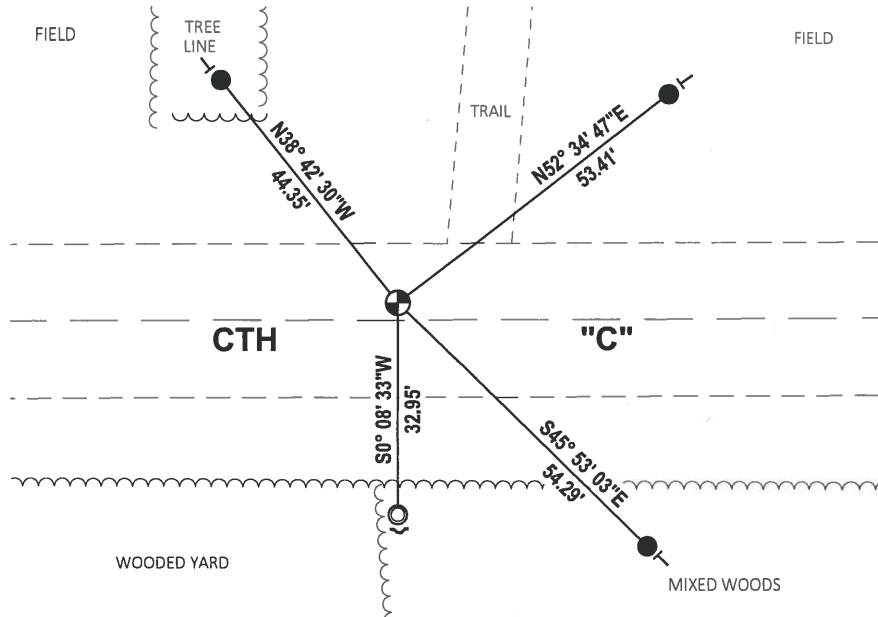
DATA SHOWN HERE ON THIS TIE SHEET IS CORRECT AND COMPLETE TO THE BEST OF MY KNOWLEDGE AND BELIEF.

PROFESSIONAL LAND SURVEYOR

DATE 11/25/19

- TIE SKETCH

NOTE THE CORNER LANDS 3'+/- NORTH OF CENTERLINE OF CTH "C"

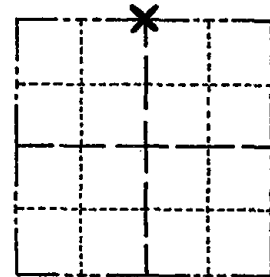


- SET 3/4" x 18" IRON REBAR, 1.50#/FT
- FOUND 1-1/4" O.D. IRON PIPE
- ⊙ FOUND HARRISON MONUMENT
- ┌ STEEL FENCE POST
- VINYL "T" POST

Government Land Corner Certificate

ADAMS County
 TYPE OF MONUMENT: HARRISON
 STATE PLANE COORDINATES: N _____
 E _____
 ELEVATION — M.S.L. DATUM: _____
 THETA ANGLE: _____
 FIELD BOOK: 101 PAGE 78
 DRAWN BY: LANCE HABECK

CORNER NO. 64
 SECTION 20
 TOWN 19 N
 RANGE 5 E



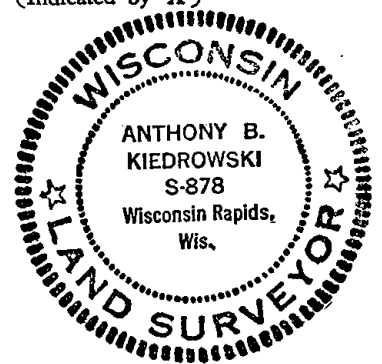
LOCATION
 (Indicated by 'X')

BASIS FOR MONUMENT LOCATION

Show info such as: History of corner, with reference to Vol. and pg., dates, surveyor; exact description of monument replaced; if location computed, by taped or EDM traverse; landowner remarks, etc. (Use reverse side if necessary)

Excavated with backhoe. Found 5 x 6 x 13" somewhat pointed sandstone. Lowered stone and set Harrison monument on top. No resurvey records. Location verified by EDM traverse by Paul Carroll, RLS.

SEAL:



Ok 3-21-84 SS

TIES O.K. - Removed Mon. - Mon. DESTROYED
 ROAD CONST. 6-7-00 JG-SS

DATA SHOWN HERE ON
 CERTIFIED CORRECT:

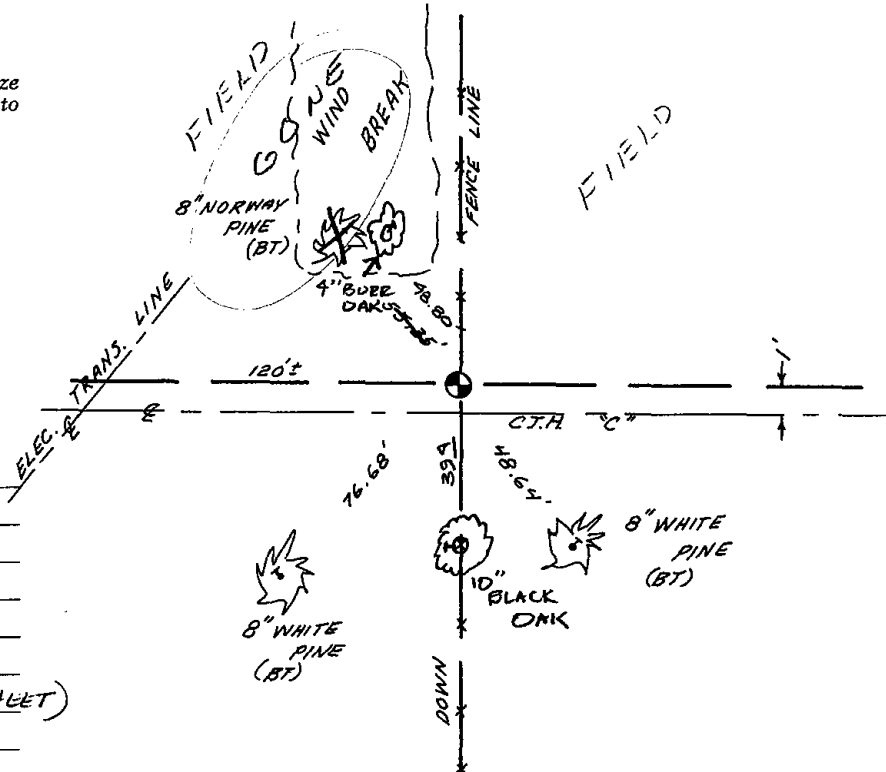
Anthony B. Kiedrowski
 Registered Land Surveyor

DATE: 5/26/77

TIE SKETCH

Show at least four ties, also fence lines, roads, topo, size and type of witness trees' and if off road - best way to arrive at corner.

Ties to nail and cap.



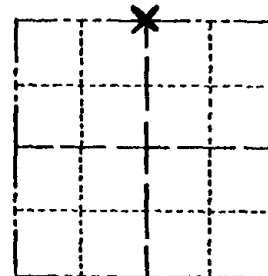
MAINTENANCE RECORD

Date	Init.	Remarks
3-20-79	RN-SS	OK
11-29-88	SS	"
2-19-94	CR-JG	ADD 2 NEW TIES
7-25-94	MC	ATTACHED
1-25-99	JG	OK (SEE ATTACHED SHEET)
1-5-04	JG	OK
1-28-09	SS	OK

Government Land Corner Certificate

ADAMS County
 TYPE OF MONUMENT: HARRISON
 STATE PLANE COORDINATES: N _____
 E _____
 ELEVATION — M.S.L. DATUM: _____
 THETA ANGLE: _____
 FIELD BOOK: 101 PAGE 78
 DRAWN BY: LANCE HABECK

CORNER NO. 64
 SECTION 20
 TOWN 19N
 RANGE 5E



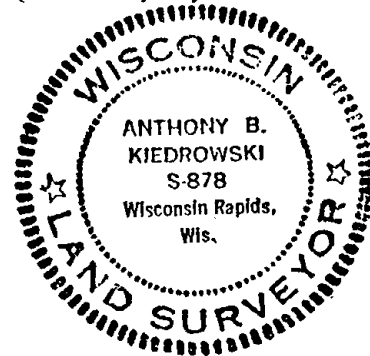
LOCATION
(Indicated by 'X')

BASIS FOR MONUMENT LOCATION

Show info such as: History of corner, with reference to Vol. and pg., dates, surveyor; exact description of monument replaced; if location computed, by taped or EDM traverse; landowner remarks, etc. (Use reverse side if necessary)

SEAL:

Excavated with backhoe. Found 5 x 6 x 13" somewhat pointed sandstone. Lowered stone and set Harrison monument on top. No resurvey records. Location verified by EDM traverse by Paul Carroll, RLS.



Ok 3-21-84 SS.

RESET MON. AFTER ROAD CONST. 7-25-00

DATA SHOWN HERE ON CERTIFIED CORRECT:

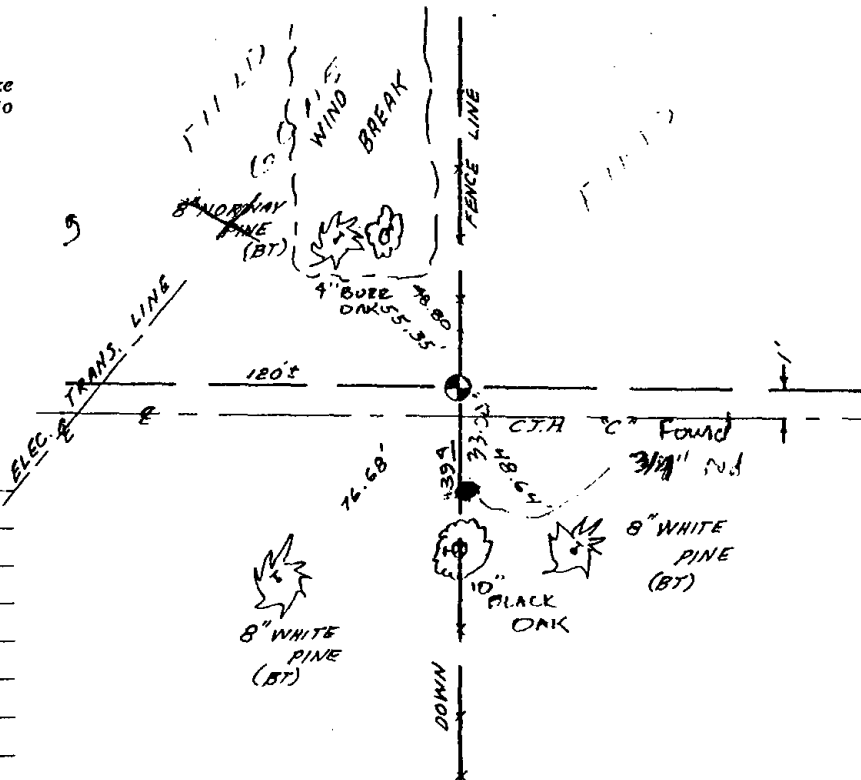
Anthony B. Kiedrowski
 Registered Land Surveyor

DATE: 5/26/77

TIE SKETCH

Show at least four ties, also fence lines, roads, topo, size and type of witness trees' and if off road - best way to arrive at corner.

Ties to nail and cap.



MAINTENANCE RECORD

Date	Init.	Remarks
3-20-79	RN-SS	OK
11-79	SS	
2-19-94	CR-JG	ADD 2 NEW TIES
7-25-97	MC	ADD 1 NEW TIE