

PUBLIC LAND SURVEY MONUMENT RECORD

TYPE OF MONUMENT: 1-1/4" IRON ROD
 ADAMS COUNTY COORDINATES, NAD 83 (2005)

N. 271651.322

E. 509496.574

ELEVATION- _____ DATUM _____

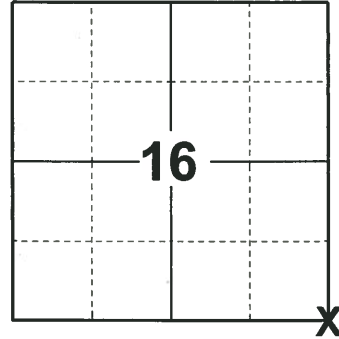
FIELD WORK DATE: 10/16/2019

BASIS FOR MONUMENT LOCATION

1973 - PLS 878 FOUND R.R. SPIKE. ACCEPTED RR SPIKE AS CORRECT AFTER TRAVERSING ENTIRE SECTION COMPARING POSSESSION LINES.

2000 - PLS UNKNOWN UPDATED TIE SHEET SHOWING TIES IN PLACE AFTER MONUMENT RESET FOLLOWING ROAD CONSTRUCTION.

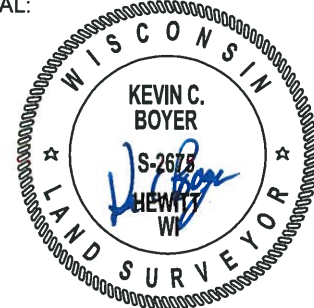
2019 - PLS 2675 FOUND 1 1/4" IRON ROD 6" BELOW THE ROAD SURFACE, 1 TIE, AND 2 WITNESSES. THE MONUMENT AGREES WITH THE TIE AND WITNESSES. ACCEPTED THE 1 1/4" IRON ROD AS THE CORNER LOCATION. SET 3 NEW TIES AND MEASURED TO THE EXISTING TIE AND WITNESSES.



LOCATION

(INDICATE CORNER BY "X")

SEAL:



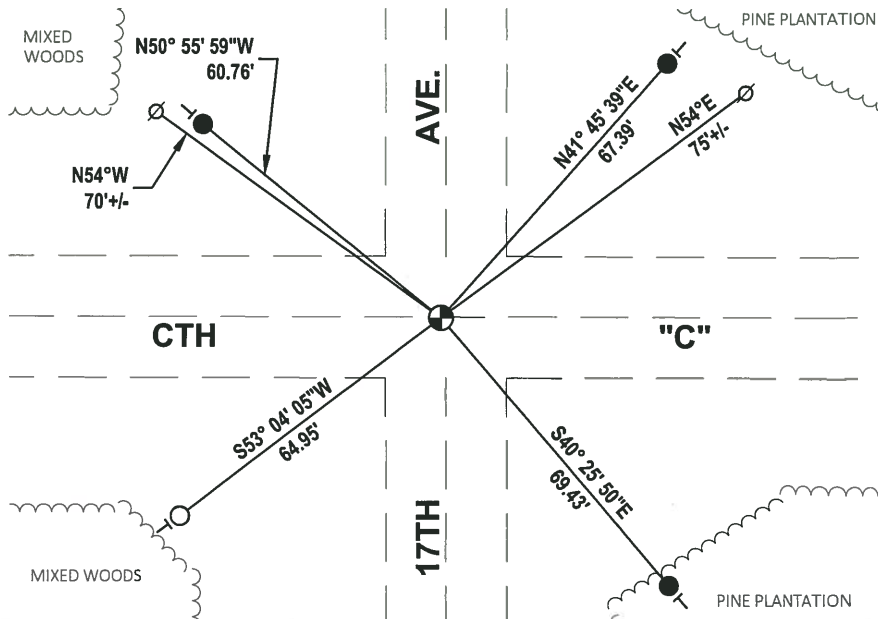
DATA SHOWN HERE ON THIS TIE SHEET IS CORRECT AND COMPLETE TO THE BEST OF MY KNOWLEDGE AND BELIEF.

PROFESSIONAL LAND SURVEYOR

DATE 11/25/19

- TIE SKETCH

NOTE: THE CORNER LANDS ON CENTER LINE OF CTH "C" AND 1'+/- WEST OF CENTERLINE OF 17TH AVE.

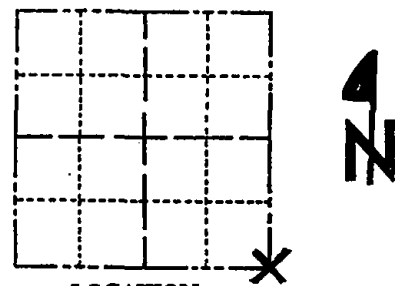


- SET 3/4" x 18" IRON REBAR, 1.50#/FT
- FOUND 3/4" IRON ROD
- ⊕ FOUND 1-1/4" IRON ROD
- ∅ WITNESS POWER POLE
- | VINYL "T" POST

Government Land Corner Certificate

ADAMS County
 TYPE OF MONUMENT: 1 1/4" X 30" IRON ROD
 STATE PLANE COORDINATES: N _____
 E _____
 ELEVATION — M.S.L. DATUM: _____
 THETA ANGLE: _____
 FIELD BOOK: _____ PAGE _____
 DRAWN BY: _____

CORNER NO. 67
 SECTION 16
 TOWN 19
 RANGE 5



LOCATION
(Indicated by 'X')

BASIS FOR MONUMENT LOCATION

Show info such as: History of corner, with reference to Vol. and pg., dates, surveyor; exact description of monument replaced; if location computed, by taped or EDM traverse; landowner remarks, etc. (Use reverse side if necessary)

THIS IS AN UPDATED TIE SHEET SHOWING TIES IN PLACE AFTER MONUMENT RESET FOLLOWING ROAD CONSTRUCTION. AUG, 2000
SEE TIE SHEET BY A.B. KEDROWSKI, DATED 1-30-73 FOR ADDITIONAL INFORMATION.

SEAL:

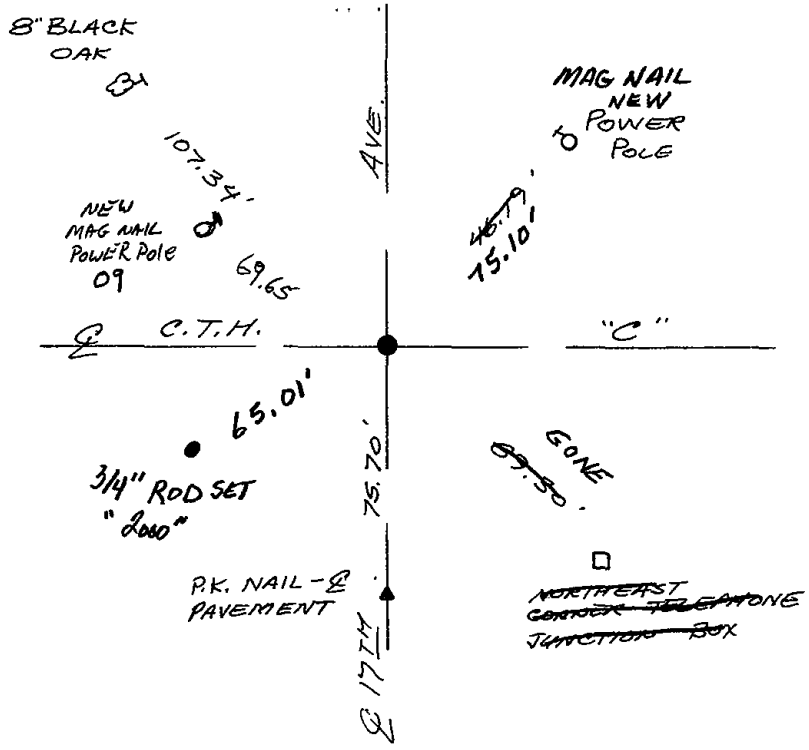
DATA SHOWN HERE ON
CERTIFIED CORRECT:

Registered Land Surveyor

DATE: _____

TIE SKETCH

Show at least four ties, also fence lines, roads, topo, size and type of witness trees' and if off road - best way to arrive at corner.



MAINTENANCE RECORD

Date	Init.	Remarks
1-5-04	JG	2- GONE, 2- NEW

ADAMS COUNTY

Survey Monument Record

TYPE OF MONUMENT: HARRISON MONUMENT

STATE PLANE COORDINATES: N _____

E _____

ELEVATION — M.S.L. DATUM: _____

THETA ANGLE: _____

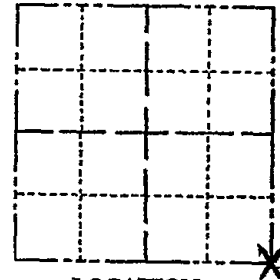
FIELD BOOK: L05 PAGE 49

CORNER NO. 176 (67)

SECTION 16

TOWN 19

RANGE 5



LOCATION (Indicated by 'X')

SEAL:



BASIS FOR MONUMENT LOCATION

(Use reverse side if necessary)

Show info such as: History of corner, with reference to Vol. and pg, dates, surveyor; exact description of monument replaced; if location computed, by taped or EDM traverse; landowner remarks, etc.

Found R.R. spike

August 9, 1972

Anthony B. Kiedrowski R.L.S. 878

Accepted RR spike as correct after traversing entire section and comparing possession lines.

- OK 1-25-99 - JG
- OK 2-25-94 CR-JG
- OK 3-20-79 MN-SS

Ok 3-21-84 SS
" 11-29-83 SS

CERTIFIED CORRECT:

Anthony B. Kiedrowski
Registered Land Surveyor

DATE: 1-30-73

TIE SKETCH

(Show at least four ties)

