

PUBLIC LAND SURVEY MONUMENT RECORD

TYPE OF MONUMENT: HARRISON
 ADAMS COUNTY COORDINATES, NAD 83 (2005)

N. 271659.748

E. 514809.959

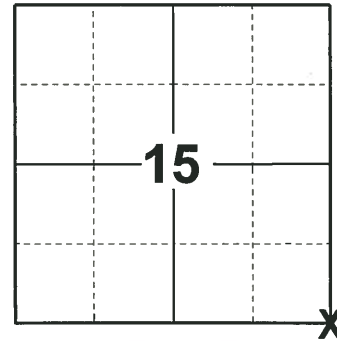
ELEVATION- - - - DATUM - - - -

FIELD WORK DATE: 10/16/2019

BASIS FOR MONUMENT LOCATION

1977 - PLS RAN EDM/T2 TRAVERSE AROUND PORTIONS OF SECTION 23 AND TO ADJACENT SECTION CORNERS TO DETERMINE SEARCH AREA FOR INVESTIGATION. EXCAVATION WITH BACKHOE BY A.B. KIEDROWSKI, ADAMS COUNTY SURVEYOR, YIELDED BOTTOM 6" OF ROTTED 4" DIAMETER WOOD POST. REMONUMENTED POST WITH HARRISON MONUMENT ON 4-13-77.

2019 - PLS 2675 FOUND HARRISON 6" BELOW THE ROAD SURFACE AND 1 WITNESS. THE MONUMENT AGREES WITH THE WITNESS. ACCEPTED THE HARRISON AS THE CORNER LOCATION. SET 4 NEW TIES AND MEASURED TO THE EXISTING WITNESS.



LOCATION
 (INDICATE CORNER BY "X")

SEAL:



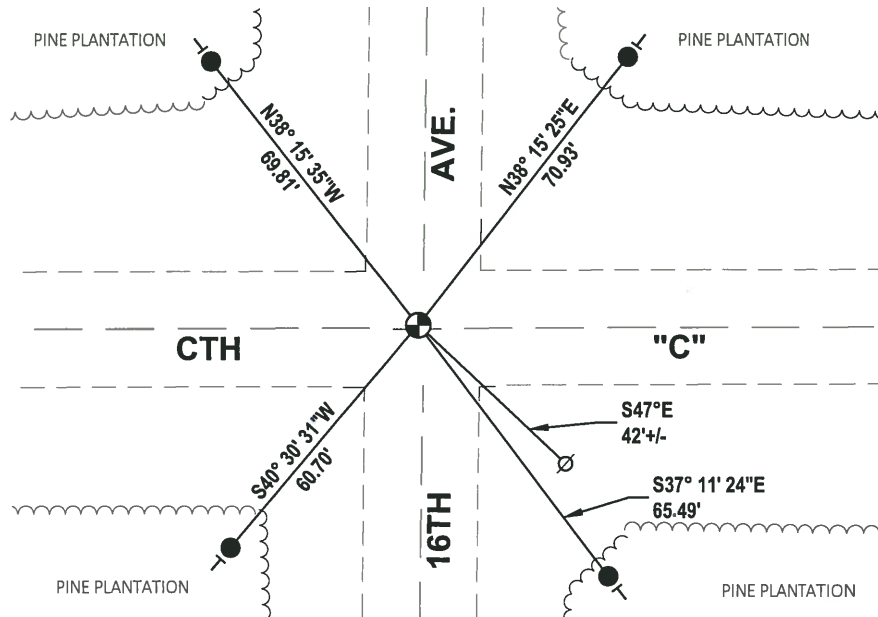
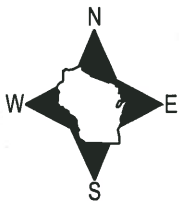
DATA SHOWN HERE ON THIS TIE SHEET IS CORRECT AND COMPLETE TO THE BEST OF MY KNOWLEDGE AND BELIEF.

PROFESSIONAL LAND SURVEYOR

DATE 11/25/19

- TIE SKETCH

NOTE: THE CORNER LANDS 1'+/- NORTH OF CTH "C" CENTERLINE AND 1'+/- WEST OF 16TH AVE CENTERLINE.



- SET 3/4" x 18" IRON REBAR, 1.50#/FT
- ⊕ FOUND HARRISON MONUMENT
- ∅ WITNESS POWER POLE
- ┆ VINYL "T" POST

ADAMS COUNTY

Survey Monument Record

TYPE OF MONUMENT: Harrison

STATE PLANE COORDINATES: N _____

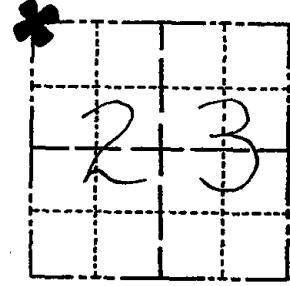
E _____

ELEVATION — M.S.L. DATUM: _____

THETA ANGLE: _____

FIELD BOOK: 54 PAGE 4
101 71

CORNER NO. 69
SECTION 23
TOWN 19
RANGE 5



LOCATION
(Indicated by 'X')

SEAL:

BASIS FOR MONUMENT LOCATION

(Use reverse side if necessary)

Show info such as: History of corner, with reference to Vol. and pg, dates, surveyor; exact description of monument replaced; if location computed, by taped or EDM traverse; landowner remarks, etc.

Ran EDM/T2 traverse around portions of Section 23 and to adjacent section corners to determine search area for investigation.

Excavation with backhoe by Anthony Kiedrowski, Adams County Surveyor, yielded bottom 6" of rotted 4" diameter wood post.

Remonumented post with Harrison on 4-13-77.



COR OK 11-29-78 RN-DA

1 gone no new monument ok 4-12-84 SS-DK

- OK 11-29-88 SS
- OK 2-25-74 CR-JL
- OK 2-10-98 JG
- OK 1-02-03-56

CERTIFIED CORRECT:

Anthony B. Kiedrowski
Registered Land Surveyor
DATE: 9-6-77

TIE SKETCH

(Show at least four ties)

NOTE

Ties in trees to nail in disc.

2 New 1-28-09 MS-ES

