

PUBLIC LAND SURVEY MONUMENT RECORD

TYPE OF MONUMENT: HARRISON
 ADAMS COUNTY COORDINATES, NAD 83 (2005)

N. 271683.141

E. 522822.979

ELEVATION- - - - - DATUM - - - - -

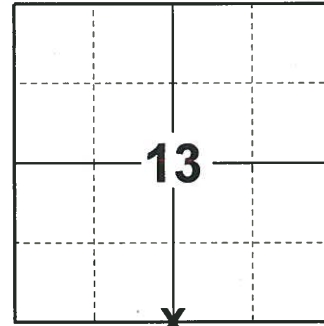
FIELD WORK DATE: 10/15/2019

BASIS FOR MONUMENT LOCATION

1977 - PLS 878 LOCATION DETERMINED BY RETRACEMENT OF A SURVEY OF SECTION 13 BY PERRY-CARRINGTON ENG. COMPANY.

2000 - PLS 1478 UPDATED TIE SHEET TO SHOW TIES IN PLACE AFTER MONUMENT WAS RESET FOLLOWING ROAD CONSTRUCTION.

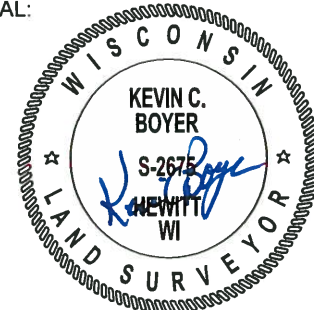
2019 - PLS 2675 FOUND HARRISON 6" BELOW THE ROAD SURFACE , 3 TIES AND 1 WITNESS. THE MONUMENT AGREES WITH ALL TIES AND WITNESS. ACCEPTED THE HARRISON AS THE CORNER LOCATION. SET 1 NEW TIE AND MEASURED TO THE EXISTING TIES AND WITNESS.



LOCATION

(INDICATE CORNER BY "X")

SEAL:



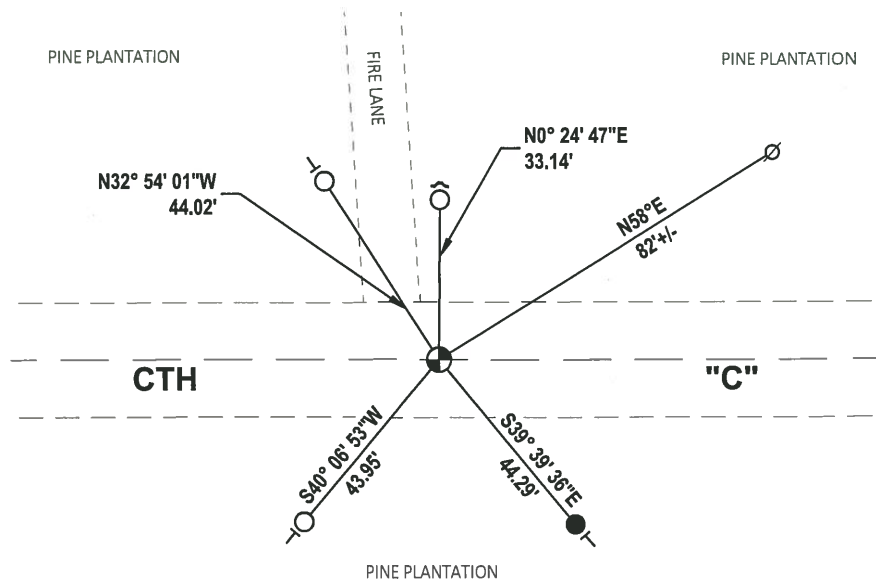
DATA SHOWN HERE ON THIS TIE SHEET IS CORRECT AND COMPLETE TO THE BEST OF MY KNOWLEDGE AND BELIEF.

PROFESSIONAL LAND SURVEYOR

DATE 11/25/19

- TIE SKETCH

NOTE: THE CORNER LANDS 9'+/- WEST OF FIRE LANE.

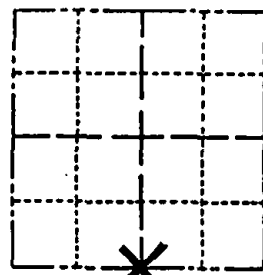


- SET 3/4" x 18" IRON REBAR, 1.50#/FT
- FOUND 3/4" IRON ROD
- ⊕ FOUND HARRISON MONUMENT
- ⊗ WITNESS POWER POLE
- ✓ STEEL FENCE POST
- T VINYL "T" POST

Government Land Corner Certificate

ADAMS County
 TYPE OF MONUMENT: Harrison standard
 STATE PLANE COORDINATES: N _____
 E _____
 ELEVATION — M.S.L. DATUM: _____
 THETA ANGLE: _____
 FIELD BOOK: _____ PAGE _____
 DRAWN BY: _____

CORNER NO. 72
 SECTION 13
 TOWN 19
 RANGE 5



LOCATION
 (Indicated by 'X')

BASIS FOR MONUMENT LOCATION

Show info such as: History of corner, with reference to Vol. and pg., dates, surveyor; exact description of monument replaced; if location computed, by taped or EDM traverse; landowner remarks, etc. (Use reverse side if necessary)

SEAL:

This is an updated tie sheet to show ties in place after monument was reset following road construction. AUG, 2000
 SEE TIE SHEET BY A.B. KIEDROWSKI, 9-6-77, FOR ADDITIONAL INFORMATION.

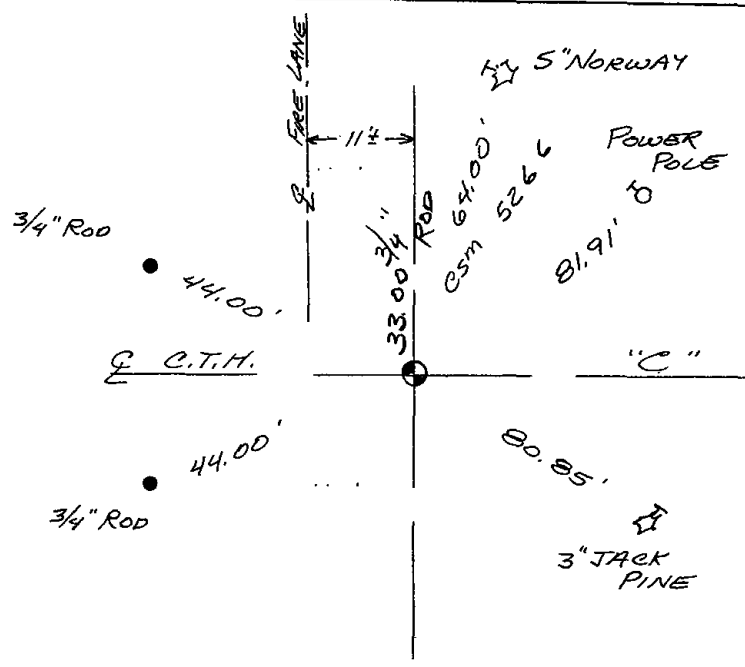
DATA SHOWN HERE ON CERTIFIED CORRECT:

Registered Land Surveyor

DATE: _____

TIE SKETCH

Show at least four ties, also fence lines, roads, topo, size and type of witness trees and if off road - best way to arrive at corner.



MAINTENANCE RECORD

Date	Init.	Remarks
12-31-02	JG	OK
1-28-09	SS	OK

ADAMS COUNTY

Survey Monument Record

TYPE OF MONUMENT: Harrison Monument

STATE PLANE COORDINATES: N _____

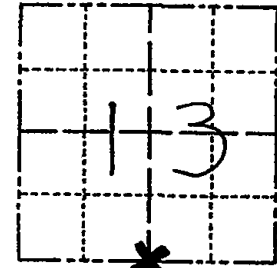
E _____

ELEVATION — M.S.L. DATUM: _____

THETA ANGLE: _____

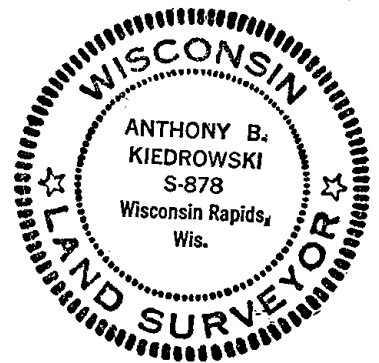
FIELD BOOK: 54 PAGE 3

CORNER NO. 72
 SECTION 13
 TOWN 19
 RANGE 5



LOCATION
(Indicated by 'X')

SEAL:



BASIS FOR MONUMENT LOCATION

(Use reverse side if necessary)

Show info such as: History of corner, with reference to Vol. and pg, dates, surveyor; exact description of monument replaced; if location computed, by taped or EDM traverse; landowner remarks, etc.

Retied existing Harrison monument.

Location determined by retracement of a survey of section 13 by Perry-Carrington Eng. Co.

3 NEW TIES 1 MARCH 94 CR-34
 Cor OK 11-29-78 RN-DA

OK 4-12-84 SS-DK
 OK 11-28-88 SS

OK, 2-10-98-JG

Set 4-13-77
 6/13/2000 GR-ML

REMOVED MONI FOR CON ST. RESET AUG, 2000

CERTIFIED CORRECT:

Anthony B. Kiedrowski
 Registered Land Surveyor

DATE: 9/6/22

TIE SKETCH

(Show at least four ties)

