

## PUBLIC LAND SURVEY MONUMENT RECORD

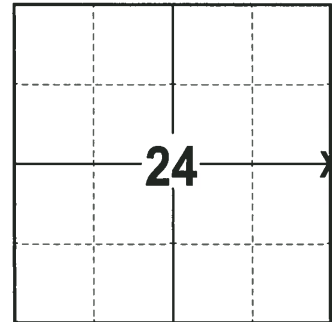
TYPE OF MONUMENT: HARRISON (BROKEN-TOP)  
 ADAMS COUNTY COORDINATES, NAD 83 (2007)

N. 269012.848

E. 494696.689

ELEVATION- \_\_\_\_\_ DATUM \_\_\_\_\_

FIELD WORK DATE: 1/18/2018



### BASIS FOR MONUMENT LOCATION

1977 - PLS 1103 RAN EDM/T2 TRAVERSE AROUND SECTION 19 TO DETERMINE SEARCH AREA FOR INVESTIGATION. EXCAVATION YIELDED NO EVIDENCE OF THE ORIGINAL CORNER OR ANY REMONUMENTATION. COULD NOT FIND ANY EVIDENCE OF BEARING TREES. CALCULATED CORNER BY SINGLE PROPORTIONATE MEASUREMENT, ON LINE AND BETWEEN ADJACENT SECTION CORNERS. SET A HARRISON MONUMENT AND TIED OUT.

2018 - PLS 2994 FOUND HARRISON MONUMENT WITH A BROKEN-TOP 10" BELOW THE GROUND SURFACE, 1 TIE AND 1 WITNESS TREE. THE MONUMENT AGREES WITH THE EXISTING TIE AND WITNESS TREE. ACCEPTED THE HARRISON MONUMENT WITH A BROKEN-TOP AS THE CORNER LOCATION. SET 4 NEW TIES AND MEASURED TO THE TIES AND WITNESS TREE.

**LOCATION**  
(INDICATE CORNER BY "X")

SEAL:



DATA SHOWN HERE ON THIS TIE SHEET IS CORRECT AND COMPLETE TO THE BEST OF MY KNOWLEDGE AND BELIEF.

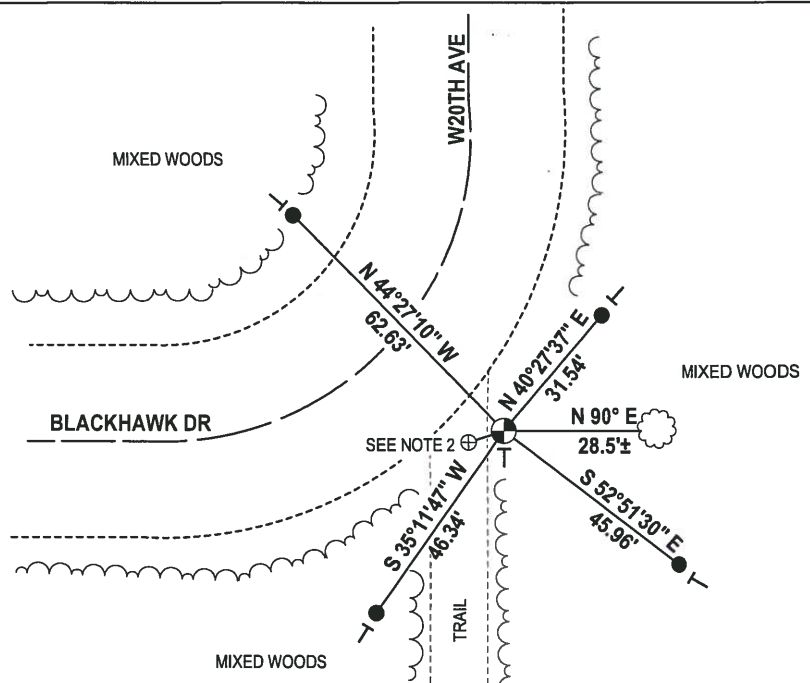
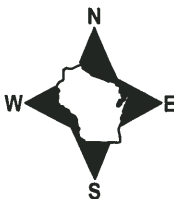
PROFESSIONAL LAND SURVEYOR

DATE 3-18-

### - TIE SKETCH

NOTE 1: THE CORNER FALLS 32± SOUTHEASTERLY OF THE CENTERLINE OF BLACKHAWK DR AND WEST 20TH AVE.

NOTE 2: FOUND 1-1/4" O.D. IRON PIPE S72°02'51"W, 7.77' OF THE CORNER LOCATION.



- 3/4" x 18" IRON REBAR SET, 1.50#/FT
- ⊕ 1-1/4" O.D. IROD PIPE FOUND
- HARRISON BROKEN TOP FOUND
- ┊ VINYL "T" POST
- ☼ WITNESS TREE FOUND

ADAMS COUNTY

Survey Monument Record

TYPE OF MONUMENT: HARRISON STANDARD  
 STATE PLANE COORDINATES: N \_\_\_\_\_  
 E \_\_\_\_\_  
 ELEVATION — M.S.L. DATUM: \_\_\_\_\_  
 THETA ANGLE: \_\_\_\_\_  
 FIELD BOOK: 54 PAGE 9

CORNER NO. 74  
 SECTION 19  
 TOWN 19  
 RANGE 5

BASIS FOR MONUMENT LOCATION

(Use reverse side if necessary)

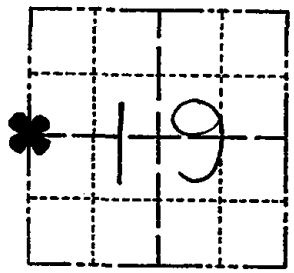
Show info such as: History of corner, with reference to Vol. and pg, dates, surveyor; exact description of monument replaced; if location computed, by taped or EDM traverse; landowner remarks, etc.

Ran EDM/T2 traverse around Section 19 to determine search area for investigation.

Excavation yielded no evidence of the original corner or any remonumentation. Could find no evidence of bearing trees.

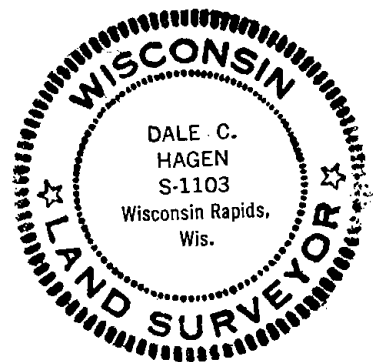
Relocated corner by single proportionate measure on line between adjacent section corners.

Set Harrison monument 6-9-77.



LOCATION  
(Indicated by 'X')

SEAL:



CERTIFIED CORRECT:

Dale C Hagen  
Registered Land Surveyor

DATE: Sept. 6, 1977

OK 11-5-79 SS-BS  
 OK 1-9-85 GR-K2 TIE  
 OK 3-20-84 GR-SS  
 OK - 2-11-94 GR-JG  
 OK - 1-26-99 -JG

TIE SKETCH OK, 1-5-84-JG  
 1-26-89 SS-MS

(Show at least four ties)

NOTE

Ties in trees to nail in disc.

