

19  
SECTION

19  
TOWN

05  
RANGE

# ADAMS COUNTY

COUNTY CORNER NO: 75

ROMPORTOL ID: 41905192000

## PUBLIC LAND SURVEY MONUMENT RECORD

TYPE OF MONUMENT: HARRISON (BROKEN-TOP)

ADAMS COUNTY COORDINATES, NAD 83 (2005)

N. 269013.419

E. 498945.621

ELEVATION-      DATUM     

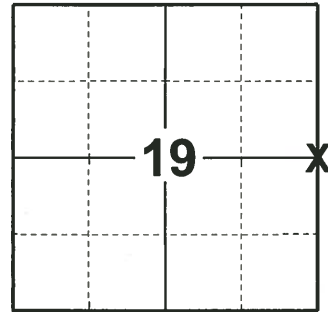
FIELD WORK DATE: 12/18/2019

### BASIS FOR MONUMENT LOCATION

1977 - PLS 878 EXCAVATED WITH A BACKHOE AND FOUND NOTHING. HE SET A HARRISON MONUMENT AT EQUAL DISTANCE BETWEEN SECTION CORNERS.

2010 - PLS 1473 FOUND HARRISON MONUMENT 1.8' UNDER THE SURFACE. SET A 5" GALVANIZED LANDSCAPING SPIKE OVER THE TOP OF THE MONUMENT.

2019 - PLS 2675 FOUND SPIKE IN ROAD SURFACE, REMOVED, FOUND HARRISON (BROKEN-TOP) MONUMENT 24" BELOW, AND 4 TIES. THE MONUMENT AGREES WITH ALL 4 TIES. ACCEPTED THE HARRISON (BROKEN-TOP) MONUMENT AS THE CORNER LOCATION AND MEASURED TO THE EXISTING TIES.



### LOCATION

(INDICATE CORNER BY "X")

SEAL:



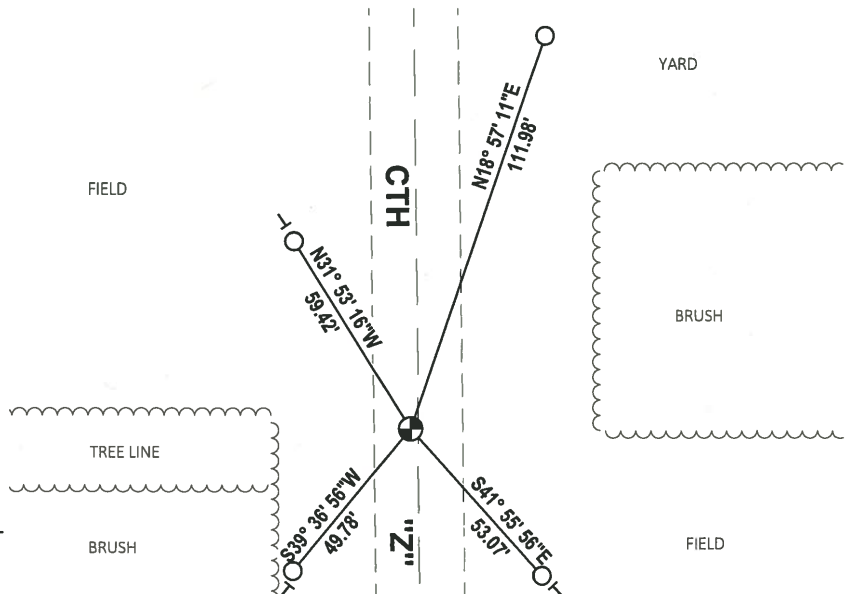
DATA SHOWN HERE ON THIS TIE SHEET IS CORRECT AND COMPLETE TO THE BEST OF MY KNOWLEDGE AND BELIEF.

PROFESSIONAL LAND SURVEYOR

DATE 1/9/2020

### - TIE SKETCH

NOTE: THE CORNER LANDS 2± WEST OF CENTERLINE OF CTH "Z"

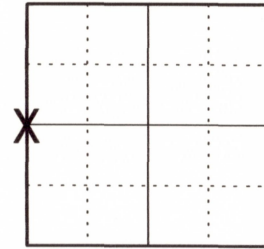


- FOUND 3/4" IRON ROD
- ⊕ FOUND HARRISON (BROKEN-TOP) MONUMENT
- VINYL "T" POST

# U.S PUBLIC LAND SURVEY MONUMENT RECORD ADAMS COUNTY, WISCONSIN

CORNER NO. 75  
SECTION 20  
TOWN 19 N  
RANGE 5 E

TYPE OF MONUMENT: 5" GALVANIZED LANDSCAPING SPIKE OVER HARRISON MON.  
ADAMS COUNTY COORDINATES:  
NORTH: 269013.38'  
EAST: 498945.62'



LOCATION

ELEVATION \_ MSL DATUM: NOT APPLICABLE  
THETA ANGLE: NOT APPLICABLE  
FIELD BOOK:  
DRAWN BY: DANIEL MARKS

### BASIS FOR MONUMENT LOCATION

On April 27, 1977 Anthony Kiedrowski excavated with a backhoe and found nothing. He set a Harrison monument at equal distance between section corners. Corner was buried 1.8' under the surface so I set a 5" galvanized landscaping spike over the top of the monument.



SEAL



DATA SHOWN HEREON CERTIFIED CORRECT:

*Richard W. Marks*

REGISTERED LAND SURVEYOR  
DATE: August 1, 2010

TIE SKETCH: No Scale

### MAINTENANCE RECORD

DATE	INIT.	REMARKS

ALL WITNESS TIES ARE  
3/4" IRON RODS SET.

