

## PUBLIC LAND SURVEY MONUMENT RECORD

TYPE OF MONUMENT: HARRISON (BROKEN-TOP)  
 ADAMS COUNTY COORDINATES, NAD 83 (2005)

N. 266371.134

E. 512234.318

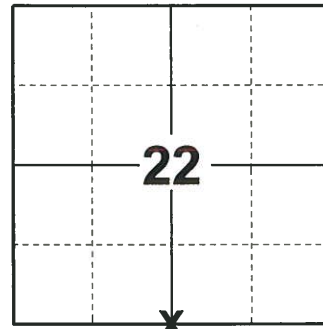
ELEVATION- \_\_\_\_\_ DATUM \_\_\_\_\_

FIELD WORK DATE: 10/23/2019

### BASIS FOR MONUMENT LOCATION

1977 - PLS 878 FOUND 3/4"X11" IRON BAR AS CALLED FOR BY M.C. SMITH IN VOLUME 1 PAGE 181 OF THE ADAMS COUNTY SURVEYOR RECORDS.

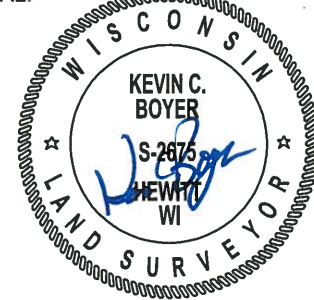
2019 - PLS 2675 FOUND A HARRISON MONUMENT WITH A BROKEN-TOP 12" BELOW THE ROAD SURFACE, 1 TIE AND 1 WITNESS. THE MONUMENT AGREES WITH THE EXISTING TIE AND WITNESS. ACCEPTED THE HARRISON MONUMENT WITH A BROKEN-TOP AS THE CORNER LOCATION. SET 3 NEW TIES AND MEASURED TO THE TIES AND WITNESS.



**LOCATION**

(INDICATE CORNER BY "X")

SEAL:



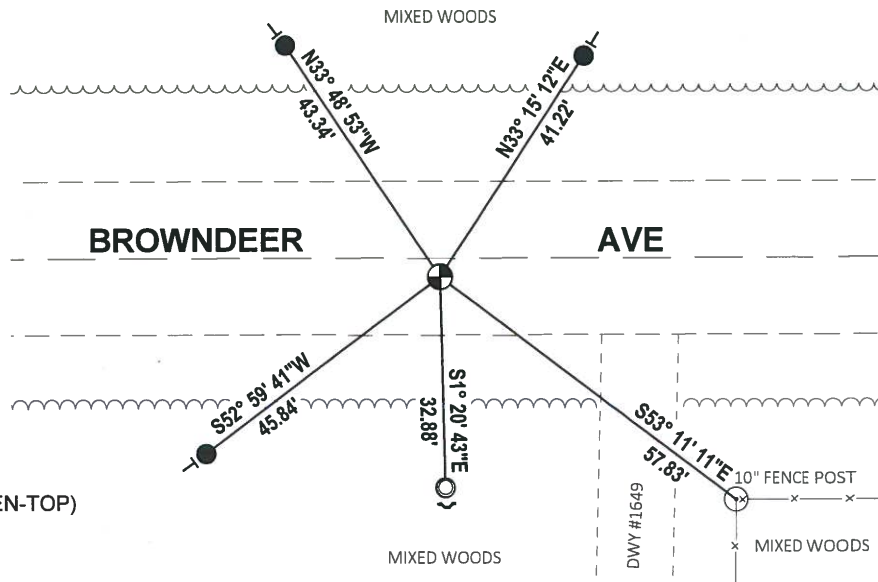
DATA SHOWN HERE ON THIS TIE SHEET IS CORRECT AND COMPLETE TO THE BEST OF MY KNOWLEDGE AND BELIEF.

PROFESSIONAL LAND SURVEYOR

DATE 11/25/19

### TIE SKETCH

NOTE: THE CORNER FALLS 3' ± SOUTH OF THE CENTERLINE OF BROWND EER AVE.



- SET 3/4" x 18" IRON REBAR, 1.50#/FT
- FOUND 1-1/4" O.D. IRON PIPE
- ⊕ FOUND HARRISON MONUMENT (BROKEN-TOP)
- ✓ STEEL FENCE POST
- VINYL "T" POST

ADAMS COUNTY

Survey Monument Record

TYPE OF MONUMENT: Standard Harrison

STATE PLANE COORDINATES: N \_\_\_\_\_  
E \_\_\_\_\_

ELEVATION — M.S.L. DATUM: \_\_\_\_\_

THETA ANGLE: \_\_\_\_\_

FIELD BOOK: 49 PAGE 2

Drafted by R. Nuber

BASIS FOR MONUMENT LOCATION

(Use reverse side if necessary)

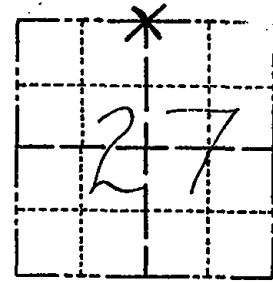
Show info such as: History of corner, with reference to Vol. and pg, dates, surveyor; exact description of monument replaced; if location computed, by taped or EDM traverse; landowner remarks, etc.

Found 3/4"X11" Iron Bar as called for by M.C. Smith in Vol 1 Pg 181 of the Adams County Surveyor Records.

Most of the oaks are dying on the north side of the road no new ties were set 3-21-84 SS

OK 3-20-79 AN-SS  
OK 2-14-94 CE-JG  
3-GONE 2-NEW TIES, 1-25-99-JG  
OK, 12-23-03-JG  
1-14-09 SS

CORNER NO. 88  
SECTION 27  
TOWN 19  
RANGE 5



LOCATION (Indicated by 'X')

SEAL:



CERTIFIED CORRECT:

*Anthony B. Kiedrowski*  
Registered Land Surveyor

DATE: Sept. 6, 1977

TIE SKETCH

(Show at least four ties)

