

23  
SECTION

19  
TOWN

05  
RANGE

# ADAMS COUNTY

COUNTY CORNER NO: 90  
ROMPORTOL ID: 41905230020

## PUBLIC LAND SURVEY MONUMENT RECORD

TYPE OF MONUMENT: HARRISON

ADAMS COUNTY COORDINATES, NAD 83 (2005)

N. 266363.837

E. 517568.310

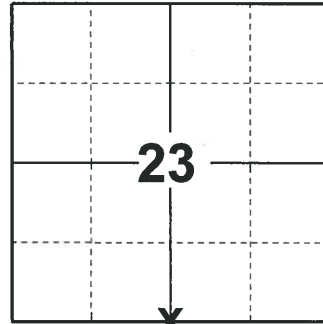
ELEVATION- - - - DATUM - - - -

FIELD WORK DATE: 10/23/2019

### BASIS FOR MONUMENT LOCATION

1971 - S 981, FOUND 1/2"X12" R' BAR AND SET A HARRISON MONUMENT.

2019 - PLS 2675 FOUND A HARRISON MONUMENT 6" BELOW THE ROAD SURFACE AND 1 TIE. THE MONUMENT AGREES WITH THE EXISTING TIE. ACCEPTED THE HARRISON MONUMENT AS THE CORNER LOCATION. SET 3 NEW TIES AND MEASURED TO THE TIES.



**LOCATION**  
(INDICATE CORNER BY "X")

SEAL:



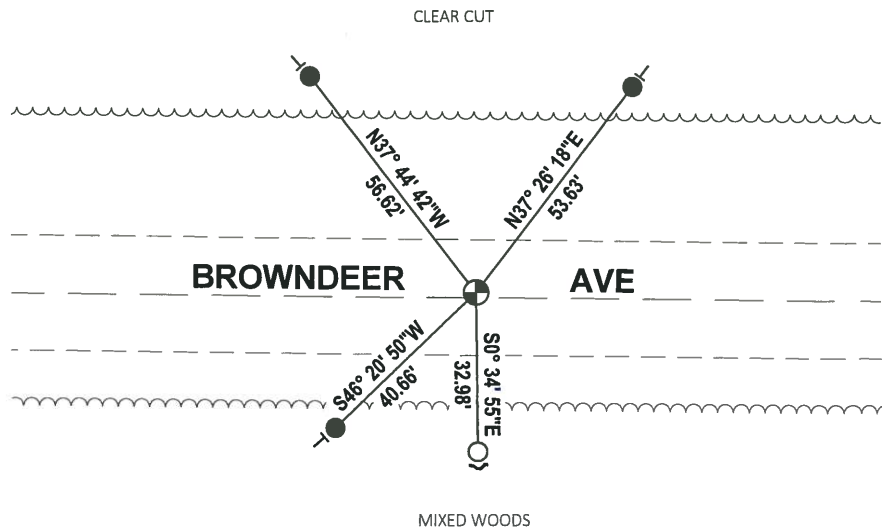
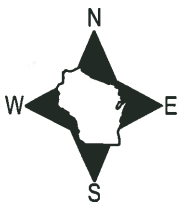
DATA SHOWN HERE ON THIS TIE SHEET IS CORRECT AND COMPLETE TO THE BEST OF MY KNOWLEDGE AND BELIEF.

PROFESSIONAL LAND SURVEYOR

DATE 11/25/19

### TIE SKETCH

NOTE: THE CORNER FALLS 1 1/2' NORTH OF THE CENTERLINE OF BROWND EER AVE.



- SET 3/4" x 18" IRON REBAR, 1.50#/FT
- FOUND 3/4" IRON ROD
- ⊕ FOUND HARRISON MONUMENT
- ↙ STEEL FENCE POST
- ↔ VINYL "T" POST

# ADAMS COUNTY

## Survey Monument Record

TYPE OF MONUMENT: 30" HARRISON

STATE PLANE COORDINATES: N \_\_\_\_\_

E \_\_\_\_\_

ELEVATION — M.S.L. DATUM: \_\_\_\_\_

THETA ANGLE: \_\_\_\_\_

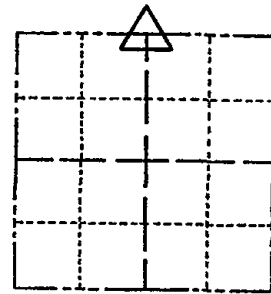
FIELD BOOK: 104 PAGE 104

CORNER NO. 75

SECTION 26

TOWN 19

RANGE 5



LOCATION  
(Indicated by 'X')



SEAL:

### BASIS FOR MONUMENT LOCATION

(Use reverse side if necessary)

Show info such as: History of corner, with reference to Vol. and pg, dates, surveyor; exact description of monument replaced; if location computed, by taped or EDM traverse; landowner remarks, etc.

Found  $\frac{1}{2}$ " x 12" R' bar and set monument

November 26, 1971

Sam T. Mullen R.L.S. S-981

*Cor OK 11-29-78 RN-DA*

OK 4-12-84 SS-DK

3 NEW TIES 7-7-89 SS-MIK

OK 2-14-94 CR-JB

1-GONE 4-LEFT 2-10-98-JG

1-NEW, 1-02-03, L-JG

CERTIFIED CORRECT:

Registered Land Surveyor

DATE: \_\_\_\_\_

### TIE SKETCH *1-14-09 SS*

(Show at least four ties)

