

PUBLIC LAND SURVEY MONUMENT RECORD

TYPE OF MONUMENT: HARRISON
 ADAMS COUNTY COORDINATES, NAD 83 (2005)

N. 266375.700

E. 522826.414

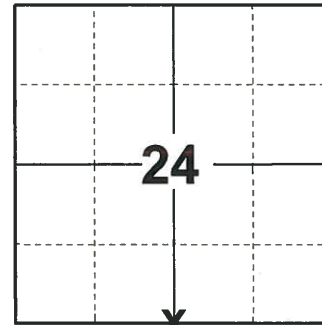
ELEVATION- _____ DATUM _____

FIELD WORK DATE: 10/22/2019

BASIS FOR MONUMENT LOCATION

1973 - PLS 878 SET ON A STRAIGHT LINE EQUIDISTANT BETWEEN SECTION CORNERS. EXCAVATED ENTIRE ROADWAY OPPOSITE TWO DIFFERENT FENCE LINES BUT FOUND NO EVIDENCE OF CORNER. (USED BACKHOE)

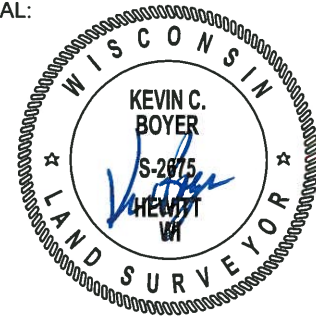
2019 - PLS 2675 FOUND A HARRISON MONUMENT 4" BELOW THE ROAD SURFACE AND 2 TIES. THE MONUMENT AGREES WITH THE EXISTING TIES. ACCEPTED THE HARRISON MONUMENT AS THE CORNER LOCATION. SET 2 NEW TIES AND MEASURED TO THE TIES.



LOCATION

(INDICATE CORNER BY "X")

SEAL:



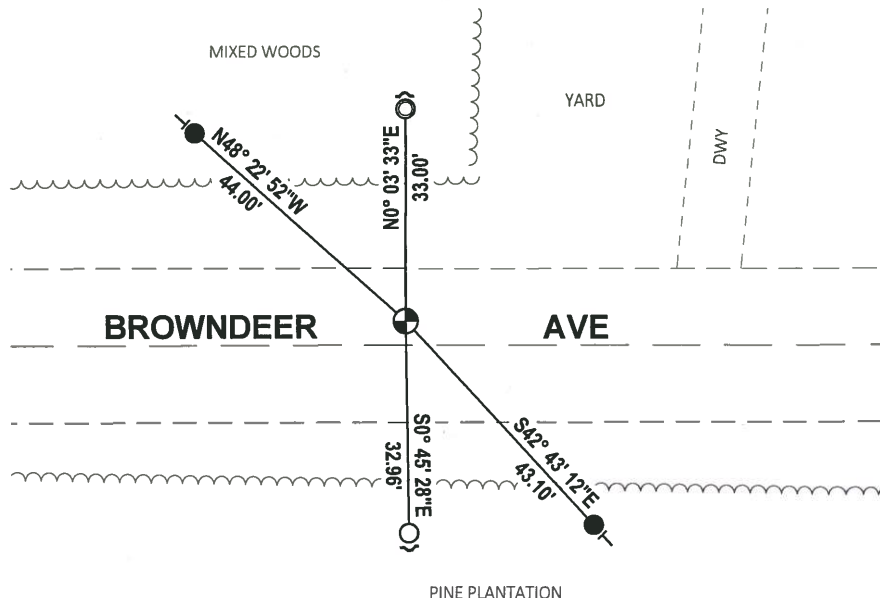
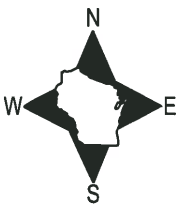
DATA SHOWN HERE ON THIS TIE SHEET IS CORRECT AND COMPLETE TO THE BEST OF MY KNOWLEDGE AND BELIEF.

PROFESSIONAL LAND SURVEYOR

DATE 11/25/19

TIE SKETCH

NOTE: THE CORNER FALLS 4' ± NORTH OF THE CENTERLINE OF BROWNDDEER AVE.



- SET 3/4" x 18" IRON REBAR, 1.50#/FT
- FOUND 3/4" IRON ROD
- ⊙ FOUND 1-1/4" O.D. IRON PIPE
- ⊕ FOUND HARRISON MONUMENT
- ↙ STEEL FENCE POST
- ┌ VINYL "T" POST

ADAMS COUNTY
Survey Monument Record

TYPE OF MONUMENT: 30" HARRISON

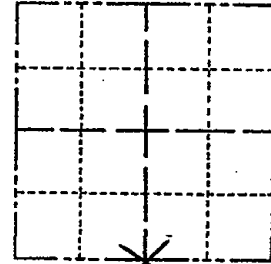
STATE PLANE COORDINATES: N _____
 E _____

ELEVATION — M.S.L. DATUM: _____

THETA ANGLE: _____

FIELD BOOK: 108 PAGE 101

CORNER NO. 314 (92)
 SECTION 24
 TOWN 19
 RANGE 5



LOCATION
 (Indicated by 'X')

SEAL:



BASIS FOR MONUMENT LOCATION

(Use reverse side if necessary)

Show info such as: History of corner, with reference to Vol. and pg, dates, surveyor; exact description of monument replaced; if location computed, by taped or EDM traverse; landowner remarks, etc.

Set on a straight line equidistant between section corners. Excavated entire roadway opposite two different fence lines but found no evidence of corner. (used backhoe)

- COR OK 11-30-78 RN-DA
- OK 4-12-84 SS-DK
- OK 11-28-88 SS
- THREE NEW TIES 2-14-94 CR-JG
- OK, 2-10-98-JG
- 1-GONE, 4-LEFT, 12-31-02-JG

CERTIFIED CORRECT:

Anthony B. Kiedrowski
 Registered Land Surveyor

DATE: 12-19-73

TIE SKETCH

(Show at least four ties)

OK 1-28-09 SS

