

PUBLIC LAND SURVEY MONUMENT RECORD

TYPE OF MONUMENT: HARRISON (BROKEN-TOP)
 ADAMS COUNTY COORDINATES, NAD 83 (2005)

N. 263722.751

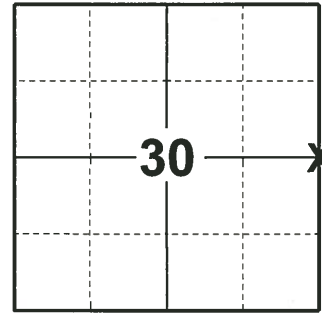
E. 499010.347

ELEVATION- - - - - DATUM - - - - -

FIELD WORK DATE: 12/19/2019

BASIS FOR MONUMENT LOCATION

- 1971 - PLS 981 FOUND A NAIL AND SET A HARRISON MONUMENT.
- 2010 - PLS 1473 FOUND THE HARRISON MONUMENT 1.2' UNDER THE SURFACE, SET A 5" GALVANIZED LANDSCAPING SPIKE OVER THE TOP OF THE MONUMENT.
- 2019 - PLS 2675 FOUND A SPIKE IN THE ROAD SURFACE, REMOVED, FOUND A HARRISON (BROKEN-TOP) 14" BELOW, AND 4 TIES. THE MONUMENT AGREES WITH ALL 4 TIES. ACCEPTED THE HARRISON (BROKEN-TOP) AS THE CORNER LOCATION AND MEASURED TO THE 4 TIES.



LOCATION
 (INDICATE CORNER BY "X")

SEAL:



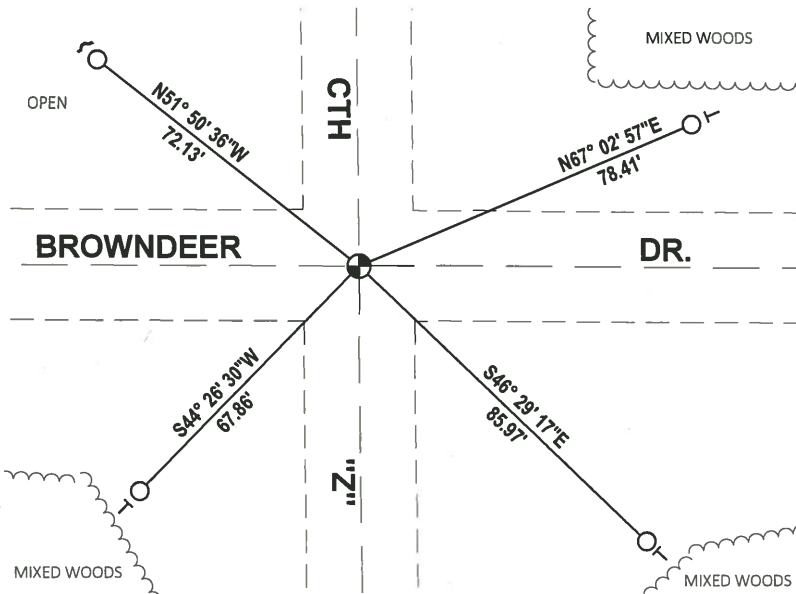
DATA SHOWN HERE ON THIS TIE SHEET IS CORRECT AND COMPLETE TO THE BEST OF MY KNOWLEDGE AND BELIEF.

PROFESSIONAL LAND SURVEYOR

DATE 1/9/2020

TIE SKETCH

NOTE: THE CORNER LANDS ON THE CENTERLINE OF INTERSECTION OF CTH "Z" AND BROWNDDEER DR.

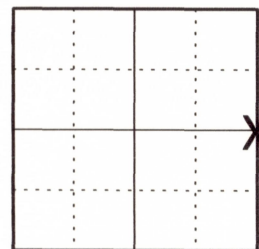


- FOUND 3/4" IRON ROD
- ⊕ FOUND HARRISON (BROEKN-TOP) MONUMENT
- ~ STEEL FENCE POST
- VINYL "T" POST

U.S PUBLIC LAND SURVEY MONUMENT RECORD ADAMS COUNTY, WISCONSIN

CORNER NO. ~~65~~ 95
SECTION 30
TOWN 19 N
RANGE 5 E

TYPE OF MONUMENT: 5" GALVANIZED LANDSCAPING SPIKE OVER HARRISON MON.
ADAMS COUNTY COORDINATES:
NORTH: 263722.73'
EAST: 499010.41'



LOCATION

ELEVATION _ MSL DATUM: NOT APPLICABLE
THETA ANGLE: NOT APPLICABLE
FIELD BOOK:
DRAWN BY: DANIEL MARKS

BASIS FOR MONUMENT LOCATION

On November 17, 1971 Sam T. Mullen found a nail and set a Harrison monument. Corner was buried 1.2' under the surface so I set a 5" galvanized landscaping spike over the top of the monument.



SEAL

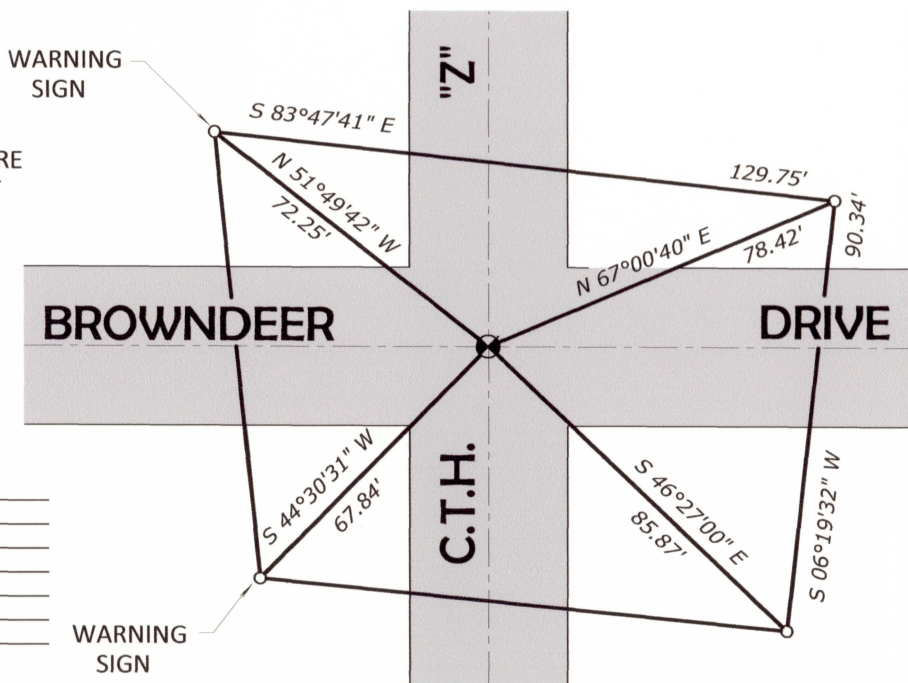


DATA SHOWN HEREON CERTIFIED CORRECT:

REGISTERED LAND SURVEYOR
DATE: August 1, 2010

TIE SKETCH: No Scale

ALL WITNESS TIES ARE
3/4" IRON RODS SET



MAINTENANCE RECORD

DATE	INIT.	REMARKS

WARNING SIGN