

PUBLIC LAND SURVEY MONUMENT RECORD

TYPE OF MONUMENT: 2 3/8" OD IRON PIPE WITH ALUMINUM CAP
 ADAMS COUNTY COORDINATES, NAD 83 (2005)

N. 261077.240

E. 497196.248

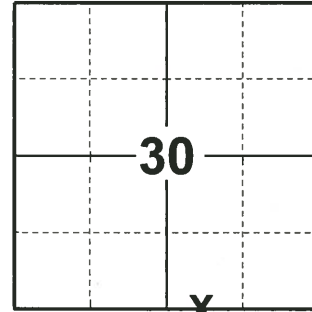
ELEVATION- - - - - DATUM - - - - -

FIELD WORK DATE: 12/10/2019

BASIS FOR MONUMENT LOCATION

1983 - PLS 1444 THIS MEANDER CORNER WAS SET BY EXTENDING THE NORTH LINE OF C.S.M. NO. 35 TO THE END OF BUTTERCUP AVENUE. S1/4 CORNER OF SECTION COULD NOT BE SET BECAUSE IT FALLS IN THE PETENWELL FLOWAGE.

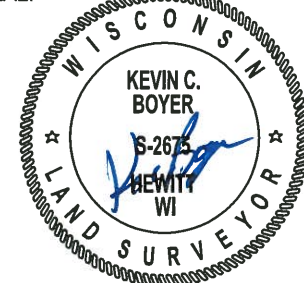
2019 - PLS 2675 FOUND 2 3/8" OD IRON PIPE WITH ALUMINUM CAP MEANDER CORNER FLUSH WITH THE GROUND AND 2 WITNESS TREES. THE MEANDER CORNER AGREES WITH BOTH WITNESS TREES. ACCEPTED THE 2 3/8" OD IRON PIPE WITH ALUMINUM CAP AS THE CORNER LOCATION. SET 4 NEW TIES AND MEASURED TO THE WITNESS TREES.



LOCATION

(INDICATE CORNER BY "X")

SEAL:

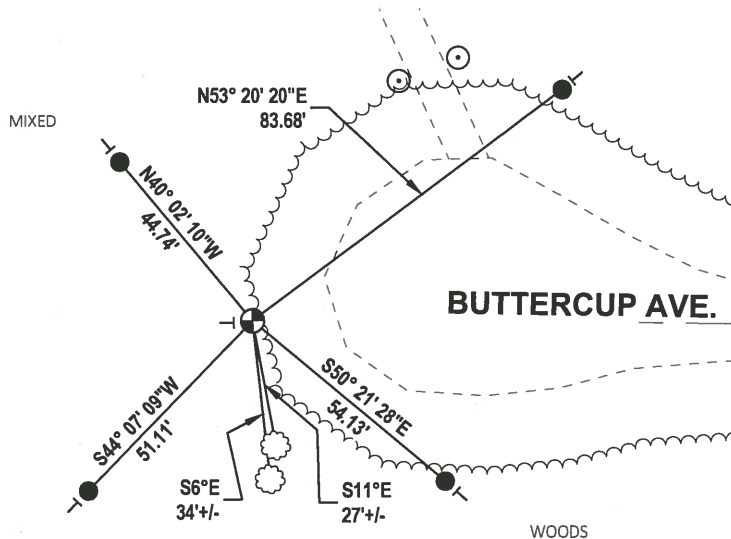
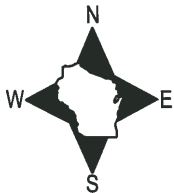


DATA SHOWN HERE ON THIS TIE SHEET IS CORRECT AND COMPLETE TO THE BEST OF MY KNOWLEDGE AND BELIEF.

PROFESSIONAL LAND SURVEYOR

DATE 1/9/2020

- TIE SKETCH



- SET 3/4" x 18" IRON REBAR, 1.50#/FT
- ⊕ FOUND 2 3/8" OD IRON PIPE WITH ALUMINUM CAP
- VINYL "T" POST
- ☼ WITNESS TREE
- ⊙ GATE POST

Government Land Corner Certificate

Adams County

TYPE OF MONUMENT: 2"x30" I.P. w/cap witness corner

STATE PLANE COORDINATES: N _____
E _____

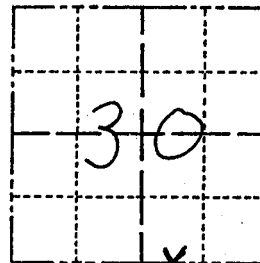
ELEVATION — M.S.L. DATUM: _____

THETA ANGLE: _____

FIELD BOOK: 92 PAGE 44

DRAWN BY: TJH

CORNER NO. 102 A
SECTION 30
TOWN 19
RANGE 5



LOCATION
(Indicated by 'X')

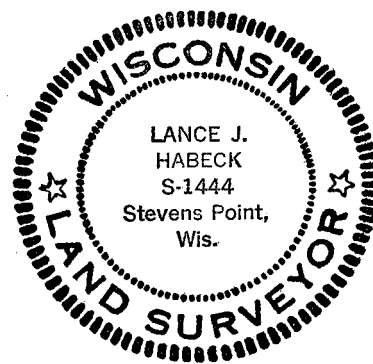
BASIS FOR MONUMENT LOCATION

Show info such as: History of corner, with reference to Vol. and pg., dates, surveyor; exact description of monument replaced; if location computed, by taped or EDM traverse; landowner remarks, etc. (Use reverse side if necessary)

This meander corner was set by extending the North line of C.S.M. No. 35 to the end of Buttercup Avenue. $S\frac{1}{4}$ corner of Section 30 could not be set because it falls in the Petenwell Flowage.

Ok 4-2-84 SS-DK

SEAL:



DATA SHOWN HERE ON
CERTIFIED CORRECT:

Lance J. Habeck
Registered Land Surveyor

DATE: 1/5/83

TIE SKETCH

Show at least four ties, also fence lines, roads, topo, size and type of witness trees' and if off road - best way to arrive at corner.

