

## PUBLIC LAND SURVEY MONUMENT RECORD

TYPE OF MONUMENT: HARRISON  
 ADAMS COUNTY COORDINATES, NAD 83 (2005)

N. 261078.886

E. 501689.212

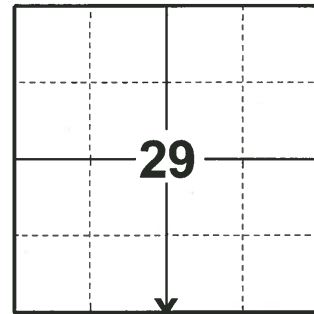
ELEVATION- - - - - DATUM - - - - -

FIELD WORK DATE: 11/20/2019

### BASIS FOR MONUMENT LOCATION

1974 - PLS 1103 DID NOT EXCAVATE FOR CORNER EVIDENCE BECAUSE SEARCH AREA FELL WITHIN CUT SECTION OF INTERSECTION. TRAVERSED AROUND SECTION 32 WITH EDM/TRANSIT TRAVERSE AND SET QUARTER CORNER EQUIDISTANT AND ON LINE BETWEEN NORTHEAST AND NORTHWEST SECTION CORNERS.

2019 - PLS 2675 FOUND HARRISON MONUMENT 8"± BELOW THE ROAD SURFACE AND 1 TIE. THE MONUMENT AGREES WITH THE EXISTING TIE. ACCEPTED THE HARRISON MONUMENT AS THE CORNER LOCATION. SET 4 NEW TIES AND MEASURED TO THE EXISTING TIE.



**LOCATION**

(INDICATE CORNER BY "X")

SEAL:



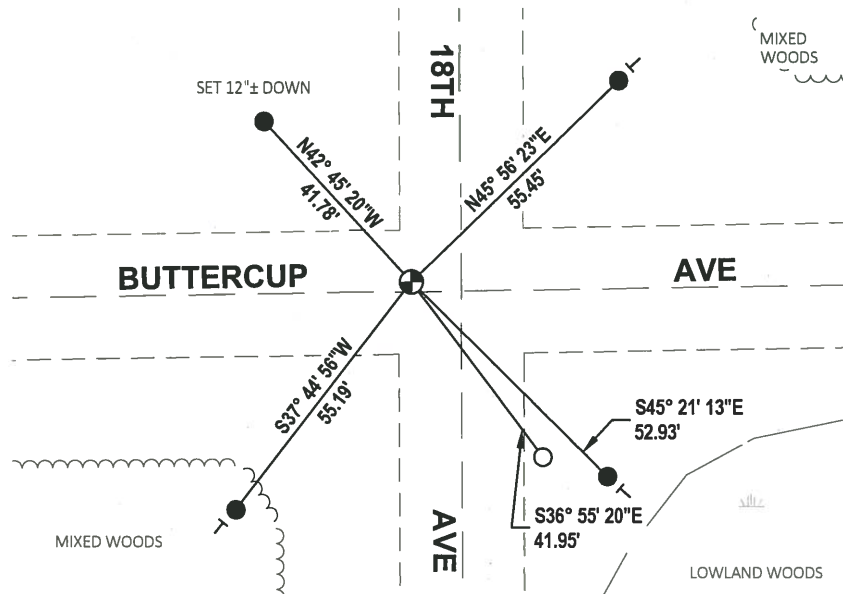
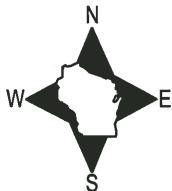
DATA SHOWN HERE ON THIS TIE SHEET IS CORRECT AND COMPLETE TO THE BEST OF MY KNOWLEDGE AND BELIEF.

PROFESSIONAL LAND SURVEYOR

DATE 1/9/2020

### - TIE SKETCH

NOTE: THE CORNER LANDS 2'± NORTH OF BUTTERCUP AVE AND 9'± WEST OF 18TH AVE CENTERLINE.



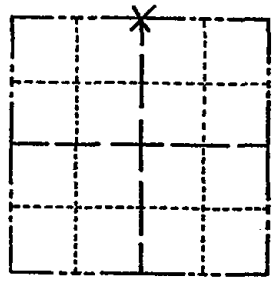
- SET 3/4" x 18" IRON REBAR, 1.50#/FT
- FOUND 3/4" IRON ROD
- ⊕ FOUND HARRISON MONUMENT
- VINYL "T" POST

# ADAMS COUNTY

## Survey Monument Record

CORNER NO. 487  
 SECTION 32  
 TOWN 19  
 RANGE 5

TYPE OF MONUMENT: HARRISON MONUMENT  
 STATE PLANE COORDINATES: N \_\_\_\_\_  
 E \_\_\_\_\_  
 ELEVATION — M.S.L. DATUM: \_\_\_\_\_  
 THETA ANGLE: \_\_\_\_\_  
 FIELD BOOK: \_\_\_\_\_ PAGE \_\_\_\_\_



LOCATION  
(Indicated by 'X')

### BASIS FOR MONUMENT LOCATION

(Use reverse side if necessary)

Show info such as: History of corner, with reference to Vol. and pg, dates, surveyor; exact description of monument replaced; if location computed, by taped or EDM traverse; landowner remarks, etc.

SEAL:



Did no excavate for corner evidence because search area fell within cut section of intersection.

Traversed around Section 32 with EDM/transit traverse and set Quarter Corner equidistant and on line between Northeast and Northwest section corners.

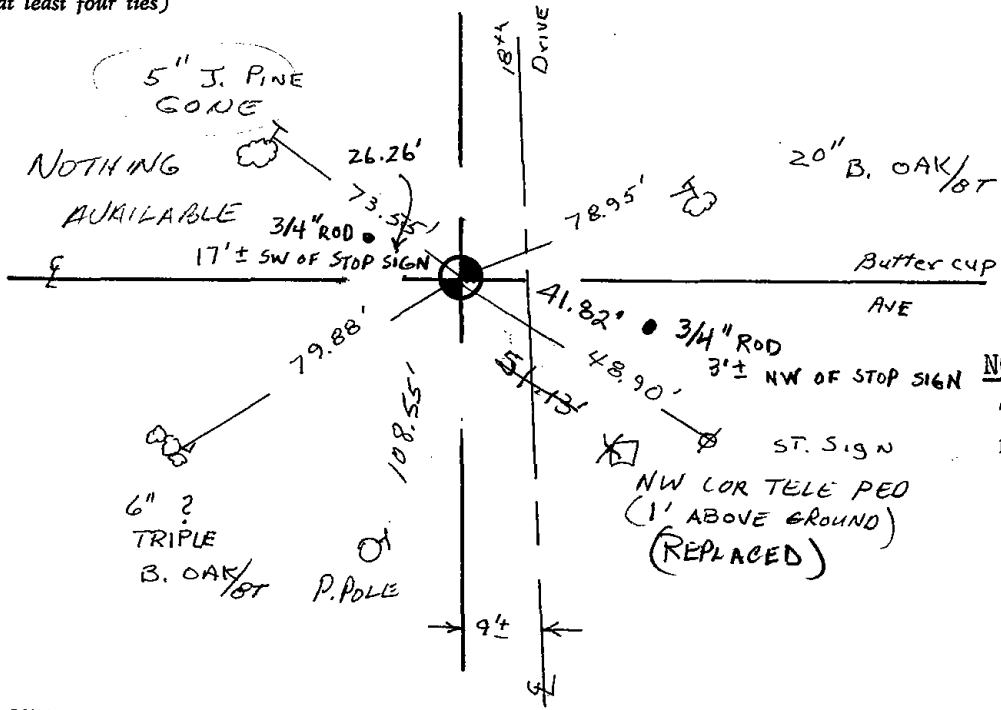
CERTIFIED CORRECT:

*Dale C. Hagen*  
 Registered Land Surveyor  
 DATE: August 3, 1974

- OK 3-20-79 RU-SS
- OK 3-21-84 SS
- OK 11-22-88 G.R. - J.R.
- OK 2-14-94 CR-JG

### TIE SKETCH 2-NEW 12-23-03-JG 01-14-09 SS

(Show at least four ties)



NOTE:

Ties in trees to nail in disc.

ADAMS COUNTY

Survey Monument Record

TYPE OF MONUMENT: HARRISON MONUMENT

STATE PLANE COORDINATES: N \_\_\_\_\_

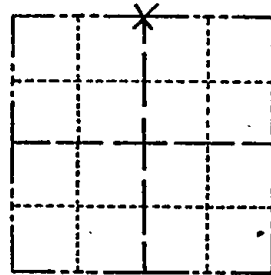
E \_\_\_\_\_

ELEVATION — M.S.L. DATUM: \_\_\_\_\_

THETA ANGLE: \_\_\_\_\_

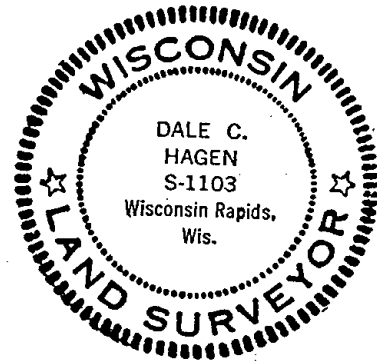
FIELD BOOK: \_\_\_\_\_ PAGE \_\_\_\_\_

CORNER NO. 487  
SECTION 32  
TOWN 19  
RANGE 5



LOCATION  
(Indicated by 'X')

SEAL:



BASIS FOR MONUMENT LOCATION

(Use reverse side if necessary)

Show info such as: History of corner, with reference to Vol. and pg, dates, surveyor; exact description of monument replaced; if location computed, by taped or EDM traverse; landowner remarks, etc.

Did no excavate for corner evidence because search area fell within cut section of intersection.

Traversed around Section 32 with EDM/transit traverse and set Quarter Corner equidistant and on line between Northeast and Northwest section corners.

NEWTIES 4-14-00 SH-MC  
OK 3-20-79 RM-SS  
OK 3-21-84 SS  
OK 11-22-88 G.R. -J.R.  
OK 2-14-94 CR-JG

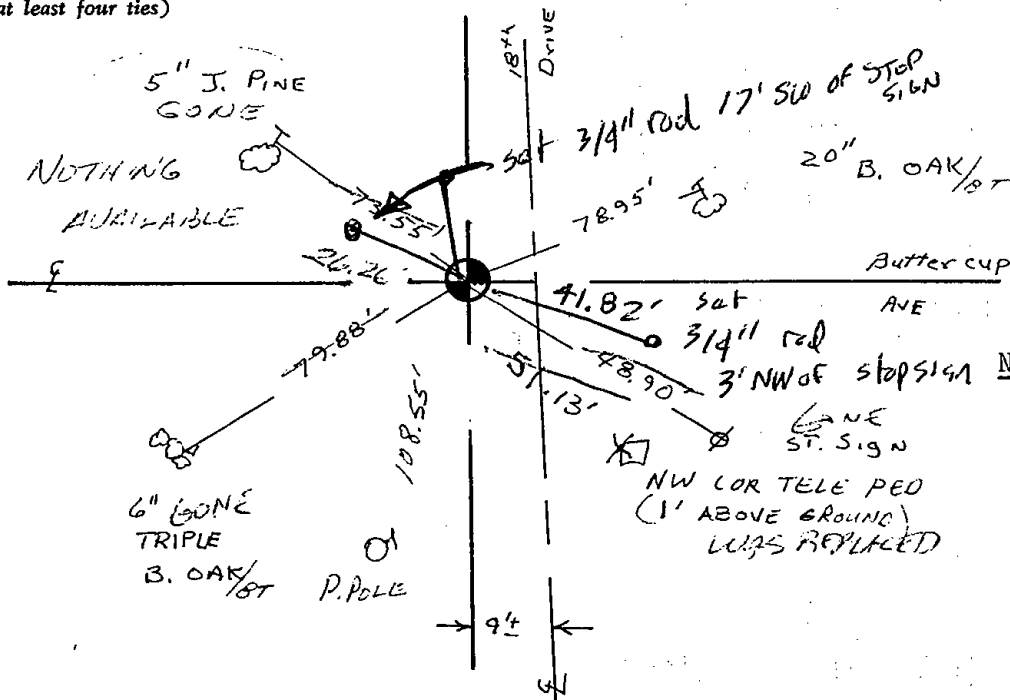
CERTIFIED CORRECT:

*Dale C. Hagen*  
Registered Land Surveyor

DATE: August 3, 1974

TIE SKETCH 2-NEW, 12-23-03-JG

(Show at least four ties)



NOTE:

Ties in trees to nail in disc.