

PUBLIC LAND SURVEY MONUMENT RECORD

TYPE OF MONUMENT: HARRISON
 ADAMS COUNTY COORDINATES, NAD 83 (2005)

N. 261078.202

E. 507001.084

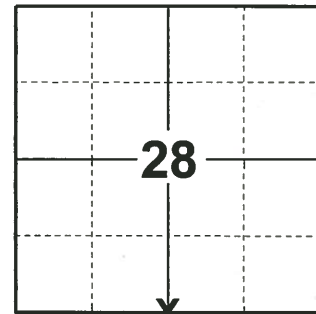
ELEVATION- - - - - DATUM - - - - -

FIELD WORK DATE: 10/30/2019

BASIS FOR MONUMENT LOCATION

1971 - PLS 981 FOUND 24" IRON PIPE AND SET HARRISON MONUMENT.

2019 - PLS 2675 FOUND HARRISON MONUMENT 10"± BELOW THE ROAD SURFACE AND 2 WITNESSES. THE MONUMENT AGREES WITH BOTH WITNESSES. ACCEPTED THE HARRISON MONUMENT AS THE CORNER LOCATION. SET 4 NEW TIES AND MEASURED TO THE EXISTING WITNESSES.



LOCATION
 (INDICATE CORNER BY "X")

SEAL:



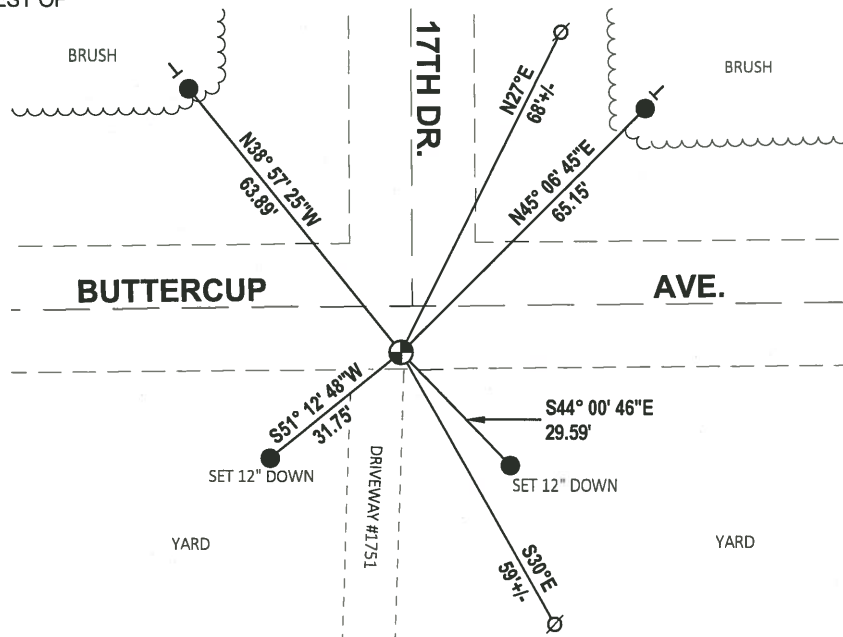
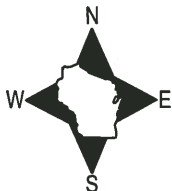
DATA SHOWN HERE ON THIS TIE SHEET IS CORRECT AND COMPLETE TO THE BEST OF MY KNOWLEDGE AND BELIEF.

PROFESSIONAL LAND SURVEYOR

DATE 1/9/2020

- TIE SKETCH

NOTE: THE CORNER LANDS 8'± SOUTH OF BUTTERCUP AVE. CENTERLINE AND 2'± WEST OF 17TH DR. CENTERLINE.



- SET 3/4" x 18" IRON REBAR, 1.50#/FT
- ⊕ FOUND HARRISON MONUMENT
- ⊗ WITNESS POWER POLE
- VINYL "T" POST

ADAMS COUNTY

Survey Monument Record

CORNER NO. 80
 SECTION 28
 TOWN 19
 RANGE 5

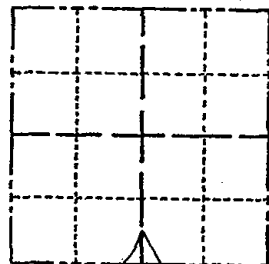
TYPE OF MONUMENT: 30" HARRISON

STATE PLANE COORDINATES: N _____
E _____

ELEVATION — M.S.L. DATUM: _____

THETA ANGLE: _____

FIELD BOOK: 104 PAGE 109



LOCATION
(Indicated by 'X')

SEAL:

BASIS FOR MONUMENT LOCATION

(Use reverse side if necessary)

Show info such as: History of corner, with reference to Vol. and pg, dates, surveyor; exact description of monument replaced; if location computed, by taped or EDM traverse; landowner remarks, etc.

Found 24" iron pipe and set monument

November 26, 1971

Sam T. Mullen R.L.S. S-981

OK 3-10-79 RW SS
 Pk nail was found over the harrison in blacktop 3-21-84
 SS
 OK 11-22-88 GR.-J.R.
 OK 2-14-94 CR-JG
 OK 1-18-99 - JG

CERTIFIED CORRECT:

Registered Land Surveyor

DATE: _____

TIE SKETCH 1-GONE, 2-NEW 12-22-03-56
 3 REMAINING TIES 4-06-09 SS
 (Show at least four ties)

