

27  
SECTION

19  
TOWN

05  
RANGE

# ADAMS COUNTY

COUNTY CORNER NO: 108

ROMPORTOL ID: 41905270020

## PUBLIC LAND SURVEY MONUMENT RECORD

TYPE OF MONUMENT: HARRISON

ADAMS COUNTY COORDINATES, NAD 83 (2005)

N. 261080.839

E. 512341.135

ELEVATION- \_\_\_\_\_ DATUM \_\_\_\_\_

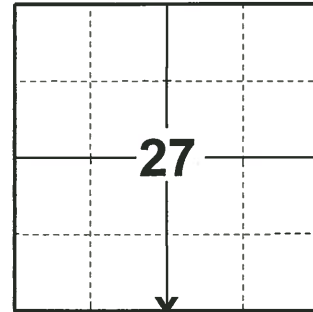
FIELD WORK DATE: 10/29/2019

### BASIS FOR MONUMENT LOCATION

1980 - PLS 1478 SET A HARRISON MONUMENT EQUIDISTANT AND ON LINE BETWEEN ADJACENT SECTION CORNERS.

2014 - PLS 2443 FOUND HARRISON MONUMENT, ESTABLISHED REFERENCE TIES AS SHOWN TO PERPETUATE THE CORNER LOCATION.

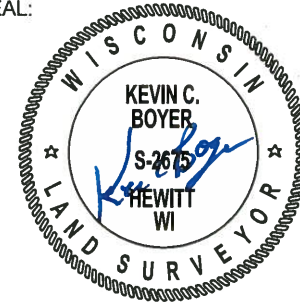
2019 - PLS 2675 FOUND HARRISON MONUMENT 8"± BELOW THE ROAD SURFACE, 3 TIES, AND 4 WITNESSES. THE MONUMENT AGREES WITH ALL THE TIES AND WITNESSES. ACCEPTED THE HARRISON MONUMENT AS THE CORNER LOCATION. SET 2 NEW TIES AND MEASURED TO THE EXISTING TIES AND WITNESSES.



LOCATION

(INDICATE CORNER BY "X")

SEAL:



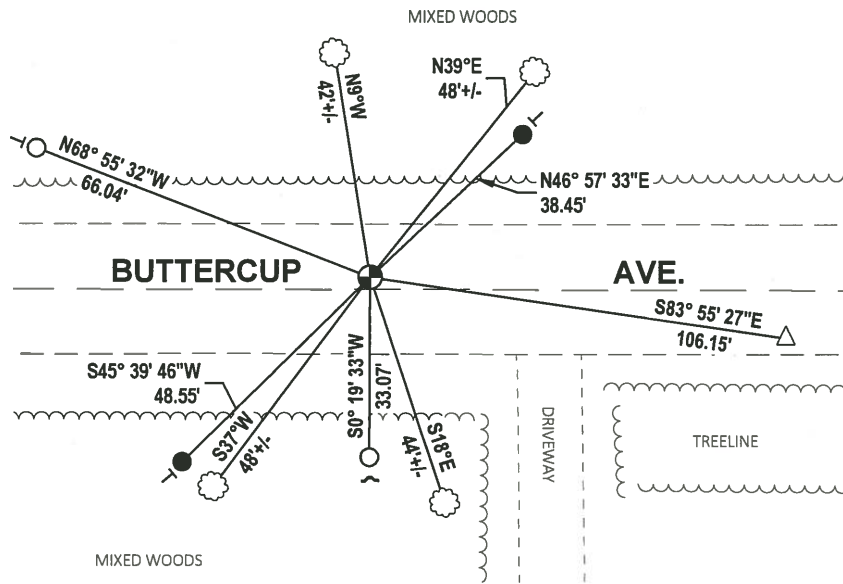
DATA SHOWN HERE ON THIS TIE SHEET IS CORRECT AND COMPLETE TO THE BEST OF MY KNOWLEDGE AND BELIEF.

PROFESSIONAL LAND SURVEYOR

DATE 11/9/2020

### TIE SKETCH

NOTE: THE CORNER LANDS 2.2'± NORTH OF BUTTERCUP AVE. CENTERLINE.



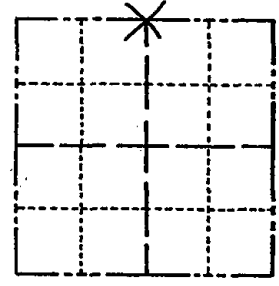
- SET 3/4" x 18" IRON REBAR, 1.50#/FT
- FOUND 3/4" IRON ROD
- △ FOUND MAG NAIL
- FOUND HARRISON MONUMENT
- ┌ STEEL FENCE POST
- └ VINYL "T" POST
- ☼ WITNESS TREE

# Government Land Corner Certificate

SET MAR  
4/21/80  
RN-SS

CORNER NO. 108  
SECTION 34  
TOWN 19  
RANGE 5

ADAMS County,  
TYPE OF MONUMENT: HARRISON STANDARD  
STATE PLANE COORDINATES: N \_\_\_\_\_  
E \_\_\_\_\_  
ELEVATION — M.S.L. DATUM: \_\_\_\_\_  
THETA ANGLE: \_\_\_\_\_  
FIELD BOOK: 83 PAGE 42  
DRAWN BY: R. NUMBER



LOCATION  
(Indicated by 'X')

## BASIS FOR MONUMENT LOCATION

Show info such as: History of corner, with reference to Vol. and pg., dates, surveyor; exact description of monument replaced; if location computed, by taped or EDM traverse; landowner remarks, etc. (Use reverse side if necessary)

Set Equidistant and on line between adjacent section corners. ABK excavated with backhoe and found no evidence of any previous monumentation. M. C. Smith indicates a post (identified) in Vol 1 Pg. 181 Adams County Surveyor Record 11/1/1913.

OK 3-21-84 SS  
OK 11-22-88 G.R.-J.R.  
OK 2-14-94 CR-JG  
OK 1-18-99-JG  
2-GONE, 3-NEW, 12-23-03-JG

SEAL:



DATA SHOWN HERE ON  
CERTIFIED CORRECT:

*Gregory P. Rhinehart*  
Registered Land Surveyor

DATE: 1/8/80

## TIE SKETCH

Show at least four ties, also fence lines, roads, topo, size and type of witness trees and if off road - best way to arrive at corner.

