

PUBLIC LAND SURVEY MONUMENT RECORD

TYPE OF MONUMENT: 2-3/8" O.D. IRON PIPE W/ALUMINUM CAP (MEANDER CORNER)
 ADAMS COUNTY COORDINATES, NAD 83 (2007)

N. 257986.973

E. 494734.663

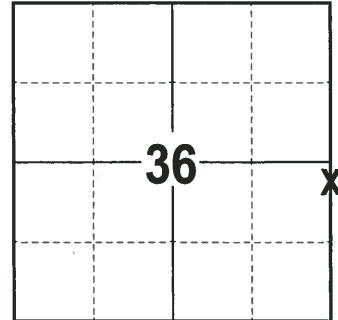
ELEVATION- _____ DATUM _____

FIELD WORK DATE: 02/22/2018

BASIS FOR MONUMENT LOCATION

1983 - PLS 1444 CALCULATED THE POSITION BY EXTENDING THE NORTH LINE OF SECTION 31 THE ORIGINAL DISTANCE AND THEN ESTABLISHING MEANDER CORNER THIS MEANDER CORNER ON LINE BETWEEN THEORETICAL NW CORNER AND THE SW CORNERS OF SECTION 31. THE W1/4 CORNER FALLS IN THE PETENWELL FLOWAGE.

2018 - PLS 2994 FOUND A 2-3/8" OD IRON PIPE W/ALUMINUM CAP 2" BELOW THE GROUND SURFACE AND 2 WITNESS TREES. THE MONUMENT AGREES WITH BOTH WITNESS TREES. ACCEPTED THE 2-3/8"OD IRON PIPE W/ALUMINUM CAP AS THE MEANDER CORNER. SET 4 NEW TIES AND MEASURED TO THE TIES AND WITNESSES.



LOCATION
(INDICATE CORNER BY "X")

SEAL:



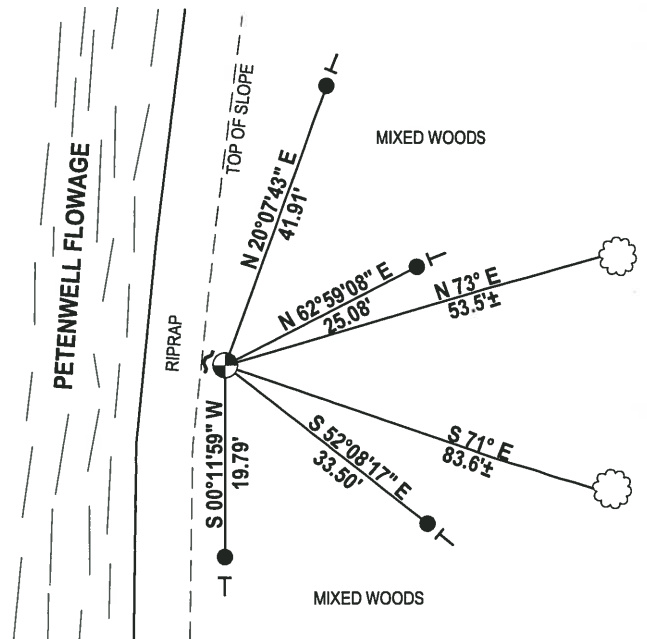
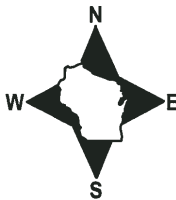
DATA SHOWN HERE ON THIS TIE SHEET IS CORRECT AND COMPLETE TO THE BEST OF MY KNOWLEDGE AND BELIEF.

PROFESSIONAL LAND SURVEYOR

DATE 3-1-18

- TIE SKETCH

NOTE: THE CORNER FALLS 20'± EAST OF THE PETENWELL FLOWAGE.

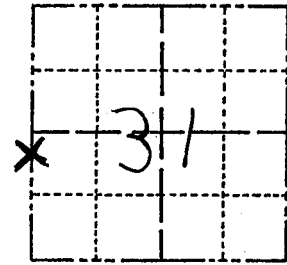


- 3/4" x 18" IRON REBAR SET, 1.50#/FT
- ⊙ 2-3/8" O.D. IRON PIPE W/ALUMINUM CAP (MEANDER CORNER)
- ~ STEEL FENCE POST
- ├ VINYL "T" POST
- ☁ WITNESS TREE FOUND

Government Land Corner Certificate

Adams County
 TYPE OF MONUMENT: 2"x30" I.P. w/cap witness corner
 STATE PLANE COORDINATES: N _____
 E _____
 ELEVATION — M.S.L. DATUM: _____
 THETA ANGLE: _____
 FIELD BOOK: 92 PAGE 137
 DRAWN BY: TJH

CORNER NO. 114
 SECTION 31
 TOWN 19
 RANGE 5



LOCATION
(Indicated by 'X')

BASIS FOR MONUMENT LOCATION

Show info such as: History of corner, with reference to Vol. and pg., dates, surveyor; exact description of monument replaced; if location computed, by taped or EDM traverse; landowner remarks, etc. (Use reverse side if necessary)

This meander corner was set by extending the North line of Section 31 the original distance and putting this meander corner on line between the theoretical NW corner and the SW corner of this Section. The W $\frac{1}{4}$ corner falls in Petenwell Flowage.

Ok 4-24-84 SS-DK

SEAL:



DATA SHOWN HERE ON CERTIFIED CORRECT:

Lance J. Habeck
 Registered Land Surveyor

DATE: 1/5/83

TIE SKETCH

Show at least four ties, also fence lines, roads, topo, size and type of witness trees' and if off road - best way to arrive at corner.

Petenwell
 Lake

