

## PUBLIC LAND SURVEY MONUMENT RECORD

TYPE OF MONUMENT: HARRISON (BROKEN-TOP)  
 ADAMS COUNTY COORDINATES, NAD 83 (2005)

N. 258437.666

E. 499070.081

ELEVATION- - - - - DATUM - - - - -

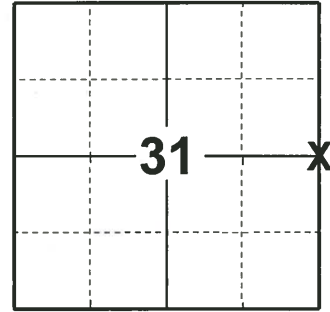
FIELD WORK DATE: 12/19/2019

### BASIS FOR MONUMENT LOCATION

1974 - PLS 1103 SET A HARRISON MONUMENT AT EQUAL DISTANCE BETWEEN THE NORTHWEST AND SOUTHWEST CORNERS OF SECTION 32.

2010 - PLS 1473 FOUND HARRISON BURIED 1.9' UNDER THE SURFACE, SET A 5" GALVANIZED LANDSCAPING SPIKE OVER THE TOP OF THE HARRISON MONUMENT.

2019 - PLS 2675 FOUND SPIKE IN THE ROAD SURFACE, REMOVED, AND FOUND HARRISON (BROKEN-TOP) 30" BELOW, AND 2 TIES (SOUTHERLY TIE LIES UNDER 3-4' OF WATER). THE MONUMENT AGREES WITH BOTH TIES. ACCEPTED THE HARRISON (BROKEN-TOP) AS THE CORNER LOCATION. SET 2 NEW TIES AND MEASURED TO THE EXISTING TIES.



**LOCATION**  
(INDICATE CORNER BY "X")

SEAL:



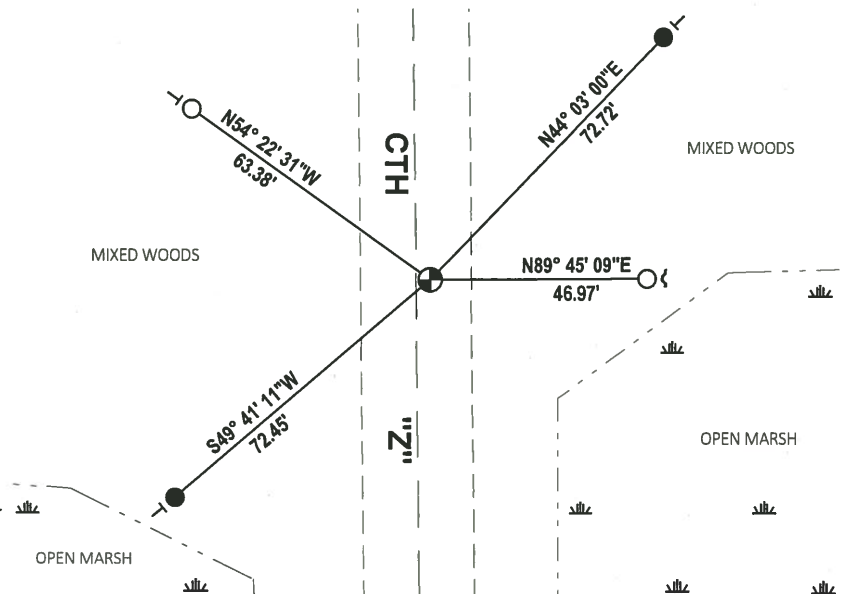
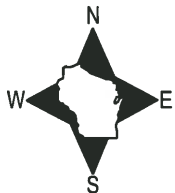
DATA SHOWN HERE ON THIS TIE SHEET IS CORRECT AND COMPLETE TO THE BEST OF MY KNOWLEDGE AND BELIEF.

PROFESSIONAL LAND SURVEYOR

DATE 1/9/2020

### TIE SKETCH

NOTE: THE CORNER LANDS 3± EAST OF CENTERLINE OF CTH "Z".

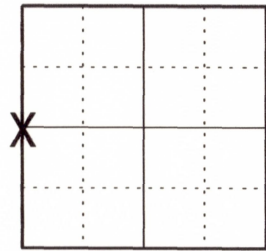


- SET 3/4" x 18" IRON REBAR, 1.50#/FT
- FOUND 3/4" IRON ROD
- ⊙ FOUND HARRISON (BROKEN-TOP) MONUMENT
- ~ STEEL FENCE POST
- VINYL "T" POST

# U.S PUBLIC LAND SURVEY MONUMENT RECORD ADAMS COUNTY, WISCONSIN

CORNER NO. 492 115  
SECTION 32  
TOWN 19 N  
RANGE 5 E

TYPE OF MONUMENT: 5" GALVANIZED LANDSCAPING SPIKE OVER HARRISON MON.  
ADAMS COUNTY COORDINATES:  
NORTH: 258437.75'  
EAST: 499070.04'



LOCATION

ELEVATION \_ MSL DATUM: NOT APPLICABLE  
THETA ANGLE: NOT APPLICABLE  
FIELD BOOK:  
DRAWN BY: DANIEL MARKS

### BASIS FOR MONUMENT LOCATION

On August 3, 1974 Dale C. Hagen set a Harrison monument at equal distance between the northwest and southwest corners of Section 32. Corner was buried 1.9' under the surface so I set a 5" galvanized landscaping spike over the top of the monument.



SEAL



DATA SHOWN HEREON CERTIFIED CORRECT:

*Richard W. Marks*

REGISTERED LAND SURVEYOR  
DATE: August 1, 2010

TIE SKETCH: No Scale

### MAINTENANCE RECORD

DATE	INIT.	REMARKS

- 3/4" IRON ROD FOUND
- 3/4" IRON ROD SET
- 5/8" IRON ROD FOUND BY RW POST

