

PUBLIC LAND SURVEY MONUMENT RECORD

TYPE OF MONUMENT: HARRISON (BROKEN-TOP)
 ADAMS COUNTY COORDINATES, NAD 83 (2007)

N. 255801.744

E. 514973.696

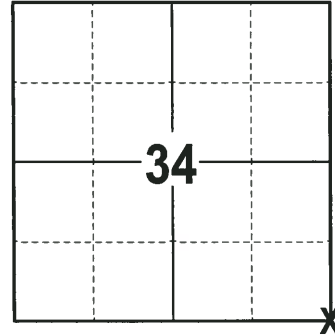
ELEVATION- _____ DATUM _____

FIELD WORK DATE: 01/15/2018

BASIS FOR MONUMENT LOCATION

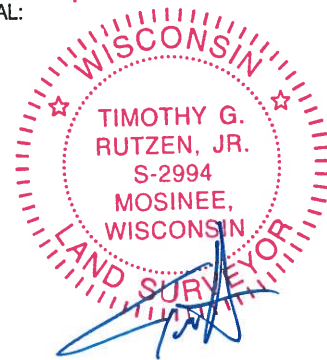
2014 - PLS 2443 STATES THAT THE LAST TIE SHEET ON FILE FOR THIS CORNER IS DATED JANUARY 8, 1980 BY GREGORY P. RHINEHART, R.L.S. 1478. RHINEHART STATES HE SET A HARRISON MONUMENT AT THIS CORNER BY SINGLE PROPORTIONATE MEASUREMENT AND ON A LINE BETWEEN THE SW CORNER OF SECTION 34 AND THE SE CORNER OF SECTION 35. NUMEROUS NOTATIONS BY OTHER SURVEYORS ALSO APPEAR ON THE TIE SHEET. THE STANDARD HARRISON CAST IRON MONUMENT WAS AT THE CORNER LOCATION AS NOTED BY RHINEHART. ESTABLISHED REFERENCE TIES TO PERPETUATE THE CORNER LOCATION.

2018 - PLS 2994 FOUND A HARRISON MONUMENT WITH A BROKEN-TOP 6" BELOW THE ROAD SURFACE AND 2 WITNESSES. THE MONUMENT AGREES WITH THE EXISTING WITNESSES. ACCEPTED THE HARRISON MONUMENT WITH A BROKEN-TOP AS THE CORNER LOCATION. SET 4 NEW TIES AND MEASURED TO THE TIES AND WITNESSES.



LOCATION
 (INDICATE CORNER BY "X")

SEAL:



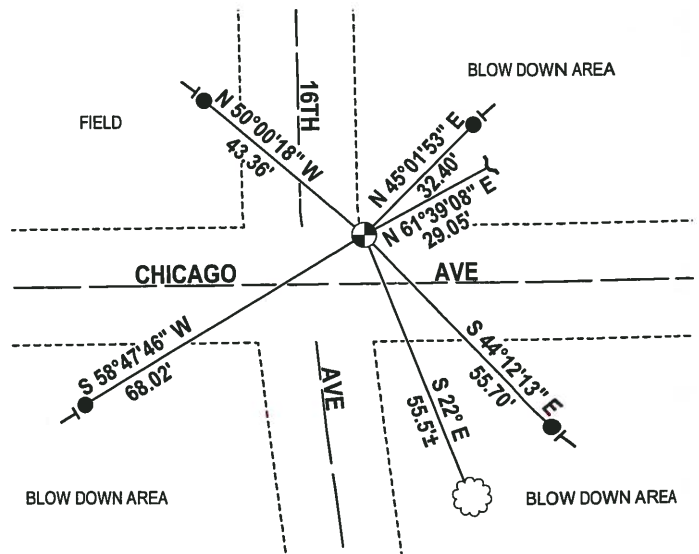
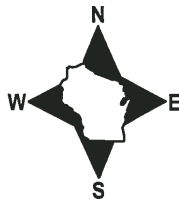
DATA SHOWN HERE ON THIS TIE SHEET IS CORRECT AND COMPLETE TO THE BEST OF MY KNOWLEDGE AND BELIEF.

PROFESSIONAL LAND SURVEYOR

DATE 3-1-18

- TIE SKETCH

NOTE: THE CORNER FALLS 10'± NORTH OF THE CENTERLINE OF CHICAGO AVE AND 13'± EAST OF THE CENTERLINE OF 16TH AVE.



- 3/4" x 18" IRON REBAR SET, 1.50#/FT
- HARRISON (BROKEN-TOP) FOUND
- ~ WITNESS "T" POST FOUND
- VINYL "T" POST
- ☼ WITNESS TREE FOUND

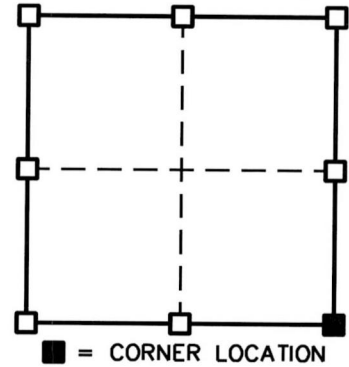
ADAMS COUNTY SURVEY MONUMENT RECORD

TYPE OF MONUMENT: STD. HARRISON CAST IRON
 ADAMS COUNTY COORDINATES: N = 255,801.72'
 E = 514,973.75'

DATUM: NAD '83/2007 ADJ.-GPS AND CONVENTIONAL CONTROL

WITNESSES TO CORNER LOCATION: TODD T. RUMMLER, MARK A. MAHONEY

CORNER No. 129
 SECTION 34
 TOWN 19N
 RANGE 5E



AFFIX LAND SURVEYOR SEAL



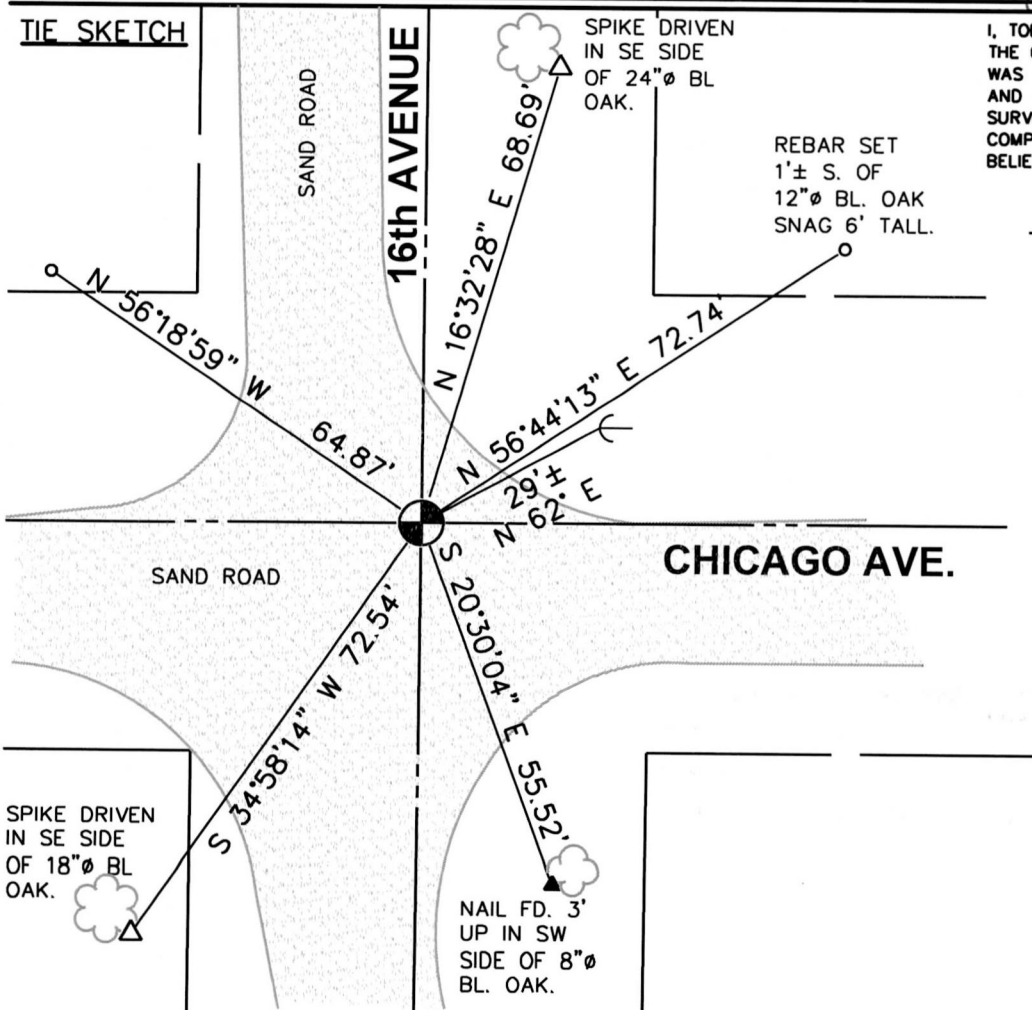
BASIS FOR MONUMENT LOCATION

SHOW INFO SUCH AS: HISTORY OF CORNER, WITH REFERENCE TO VOL. AND PG., DATES, SURVEYOR; EXACT DESCRIPTION OF MONUMENT REPLACED; IF LOCATION COMPUTED, BY TAPED OR EDM TRAVERSE; LANDOWNER REMARKS, ETC.

THE LAST TIE SHEET ON FILE FOR THIS CORNER IS DATED JANUARY 8, 1980 BY GREGORY P. RHINEHART, R.L.S. 1478. RHINEHART STATES HE SET A HARRISON MONUMENT AT THIS CORNER BY SINGLE PROPORTIONATE MEASUREMENT AND ON LINE BETWEEN THE SW CORNER OF SECTION 34 AND THE SE CORNER OF SECTION 35. NUMEROUS NOTATIONS BY OTHER SURVEYORS ALSO APPEAR ON THE TIE SHEET. I FOUND THE STANDARD HARRISON CAST IRON MONUMENT AS NOTED BY RHINEHART AND ESTABLISHED REFERENCE TIES AS SHOWN BELOW TO PERPETUATE THE CORNER LOCATION.

I, TODD T. RUMMLER, PLS-2443 CERTIFY THAT THE CORNER LOCATION SHOWN ON THIS RECORD WAS DETERMINED BY ME OR UNDER MY DIRECTION AND CONTROL AND THAT THIS ADAMS COUNTY SURVEY MONUMENT RECORD IS CORRECT AND COMPLETE TO THE BEST OF MY KNOWLEDGE AND BELIEF.

TIE SKETCH



LEGEND

- FOUND STD. HARRISON CAST IRON MONUMENT- SE CORNER SECTION 34, T19N, R5E
- SET 3/4" X 24" LONG REBAR WT. = 1.502 LBS./LN.FT.
- SET 1/2" X 4" LONG COTTON GIN SPIKE
- NAIL FOUND
- BRACED CHANNEL POST



NOT TO SCALE