

PUBLIC LAND SURVEY MONUMENT RECORD

TYPE OF MONUMENT: HARRISON
 ADAMS COUNTY COORDINATES, NAD 83 (2007)

N. 287570.032

E. 528160.384

ELEVATION- --- DATUM ---

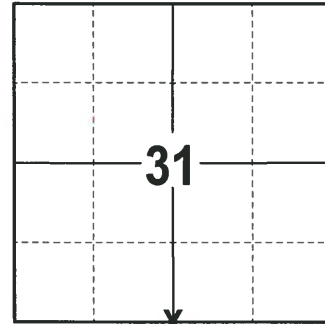
FIELD WORK DATE: 2/8/2018

BASIS FOR MONUMENT LOCATION

1976 - PLS 1103 RAN EDM/TRANSIT TRAVERSE AROUND SECTIONS 4, 5 AND PARTS OF 3 AND 6 TO DETERMINE SEARCH AREAS. EXCAVATION WITH A BACKHOE BY A.B. KIEDROWSKI, ADAMS COUNTY SURVEYOR, YIELDED NO EVIDENCE OF THE ORIGINAL CORNER OR ANY REMONUMENTATION. CALCULATED THE CORNER ON LINE AND PROPORTIONALLY BETWEEN THE ADJACENT SECTION CORNERS. SET A HARRISON MONUMENT AND TIED OUT.

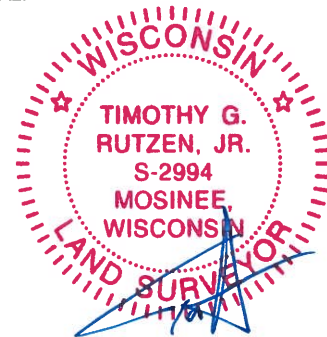
1999 - PLS (UNKNOWN) UPDATED TIE SHEET TO SHOW TIES IN PLACE AFTER THE MONUMENT WAS RE-SET FOLLOWING ROAD CONSTRUCTION.

2018 - PLS 2994 FOUND A HARRISON MONUMENT 6" BELOW THE ROAD SURFACE AND 1 TIE. THE MONUMENT AGREES WITH THE EXISTING TIE. ACCEPTED THE HARRISON MONUMENT AS THE CORNER LOCATION. SET 3 NEW TIES AND MEASURED TO THE TIES.



LOCATION
 (INDICATE CORNER BY "X")

SEAL:



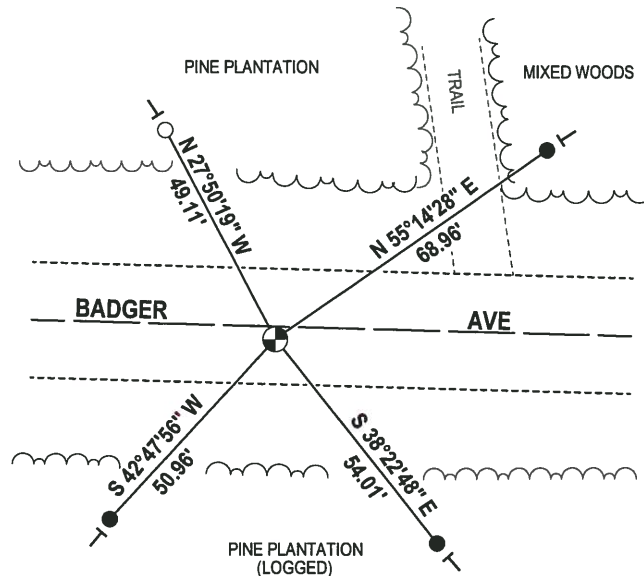
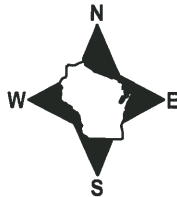
DATA SHOWN HERE ON THIS TIE SHEET IS CORRECT AND COMPLETE TO THE BEST OF MY KNOWLEDGE AND BELIEF.

PROFESSIONAL LAND SURVEYOR

DATE 3-1-18

- TIE SKETCH

NOTE: THE CORNER FALLS 3± SOUTH OF THE CENTERLINE OF BADGER AVE.

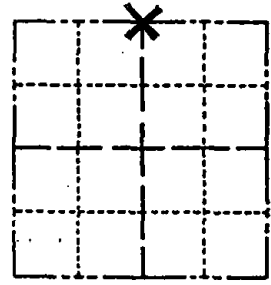


- 3/4" x 18" IRON REBAR SET, 1.50#/FT
- 3/4" IRON ROD FOUND
- ⊕ HARRISON FOUND
- └ VINYL "T" POST

Government Land Corner Certificate

ADAMS County
 TYPE OF MONUMENT: Harrison standard
 STATE PLANE COORDINATES: N _____
 E _____
 ELEVATION — M.S.L. DATUM: _____
 THETA ANGLE: _____
 FIELD BOOK: _____ PAGE _____
 DRAWN BY: _____

CORNER NO. 2
 SECTION 6
 TOWN 19
 RANGE 6



LOCATION
 (Indicated by 'X')

BASIS FOR MONUMENT LOCATION

Show info such as: History of corner, with reference to Vol. and pg., dates, surveyor; exact description of monument replaced; if location computed, by taped or EDM traverse; landowner remarks, etc. (Use reverse side if necessary)

SEAL:

This is an updated tie sheet to show ties in place after monument was reset 6-10-99 following road construction.

DATA SHOWN HERE ON
 CERTIFIED CORRECT:

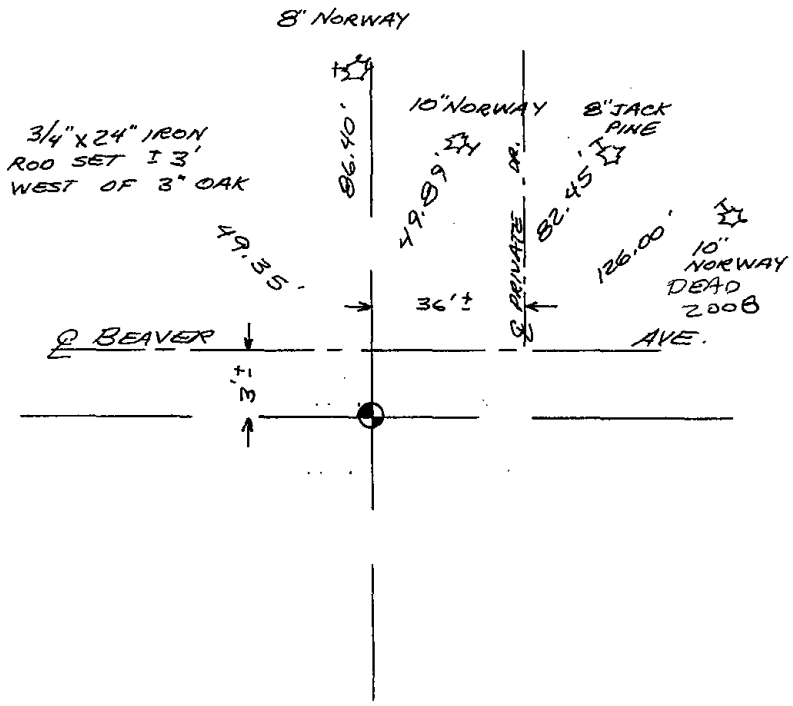
Registered Land Surveyor

DATE: _____

TIE SKETCH

Show at least four ties, also fence lines, roads, topo, size and type of witness trees and if off road - best way to arrive at corner.

HARRISON RESET 6-10-99
 SEE TIE SHEET DATED 1-17-76
 FOR ADDITIONAL INFORMATION.



MAINTENANCE RECORD

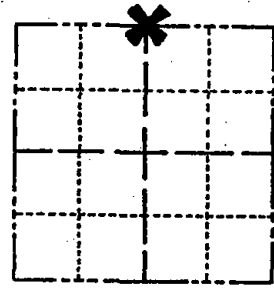
Date	Init.	Remarks
12-30-02	JG	OK MAGNAIL @ CORNER
2/12/08		OK GPR

ADAMS COUNTY

CORNER NO. 784
 SECTION 6
 TOWN 19
 RANGE 6

Survey Monument Record

TYPE OF MONUMENT: Standard Harrison
 STATE PLANE COORDINATES: N _____
 E _____
 ELEVATION — M.S.L. DATUM: _____
 THETA ANGLE: _____
 FIELD BOOK: _____ PAGE _____



LOCATION
(Indicated by 'X')

BASIS FOR MONUMENT LOCATION

(Use reverse side if necessary)

Show info such as: History of corner, with reference to Vol. and pg, dates, surveyor; exact description of monument replaced; if location computed, by taped or EDM traverse; landowner remarks, etc.

SEAL:



Ran EDM/transit traverse around Sections 4, 5, and parts of 3 and 6 to determine search areas.

Excavation with backhoe by A.B.Kiedrowski, Adams County Surveyor, yielded no evidence of the original corner or any remonumentation.

Set corner on line and proportionally between the adjacent Section corners.

OK 11-24-78 SS-DA
 3-11-83 GR-SS 1 NEW TIE
 3-GONE, 4-NEW TIES 1-7-93 JG-B5
 OK, 2-12-98-JG

CERTIFIED CORRECT:

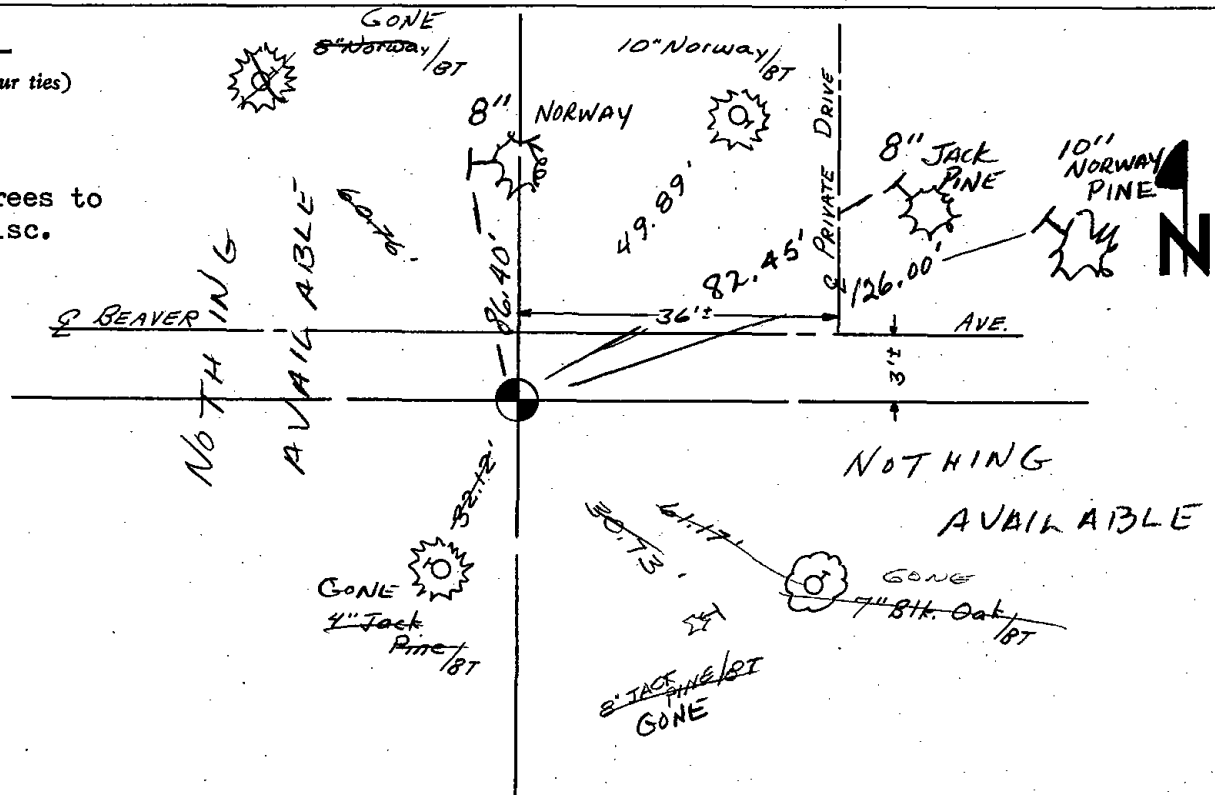
Dale C. Hagen
 Registered Land Surveyor

DATE: January 17, 1976

TIE SKETCH

(Show at least four ties)

NOTE:
Ties in trees to nail in disc.



This replaced to ~~be~~ dated 9/2/75