

PUBLIC LAND SURVEY MONUMENT RECORD

TYPE OF MONUMENT: HARRISON
 ADAMS COUNTY COORDINATES, NAD 83 (2007)

N. 287570.883

E. 530797.119

ELEVATION- --- DATUM ---

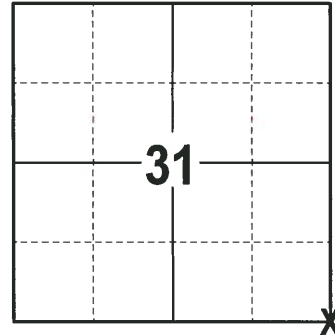
FIELD WORK DATE: 02/08/2018

BASIS FOR MONUMENT LOCATION

1976 - PLS 1103 RAN EDM/TRANSIT TRAVERSE AROUND SECTIONS 4, 5 AND PARTS OF 3 AND 6 TO DETERMINE SEARCH AREAS. EXCAVATION WITH A BACKHOE YIELDED NO EVIDENCE OF THE ORIGINAL CORNER OR ANY REMONUMENTATION. CALCULATED THE CORNER PROPORTIONAL TO THE ORIGINAL NOTES BETWEEN THE NORTHWEST CORNER OF SECTION 6 AND THE NORTHEAST CORNER OF SECTION 4. SET A HARRISON MONUMENT AND TIED OUT.

2000 - PLS (UNKNOWN) UPDATED TIE SHEET TO SHOW TIES IN PLACE AFTER THE MONUMENT WAS RE-SET FOLLOWING ROAD CONSTRUCTION.

2018 - PLS 2994 FOUND A HARRISON MONUMENT 4" BELOW THE ROAD SURFACE, 1 TIE AND 1 PROPERTY IRON. THE MONUMENT AGREES WITH THE EXISTING TIE. ACCEPTED THE HARRISON MONUMENT AS THE CORNER LOCATION. SET 2 NEW TIES AND MEASURED TO THE TIES AND PROPERTY IRON.



LOCATION
 (INDICATE CORNER BY "X")

SEAL:



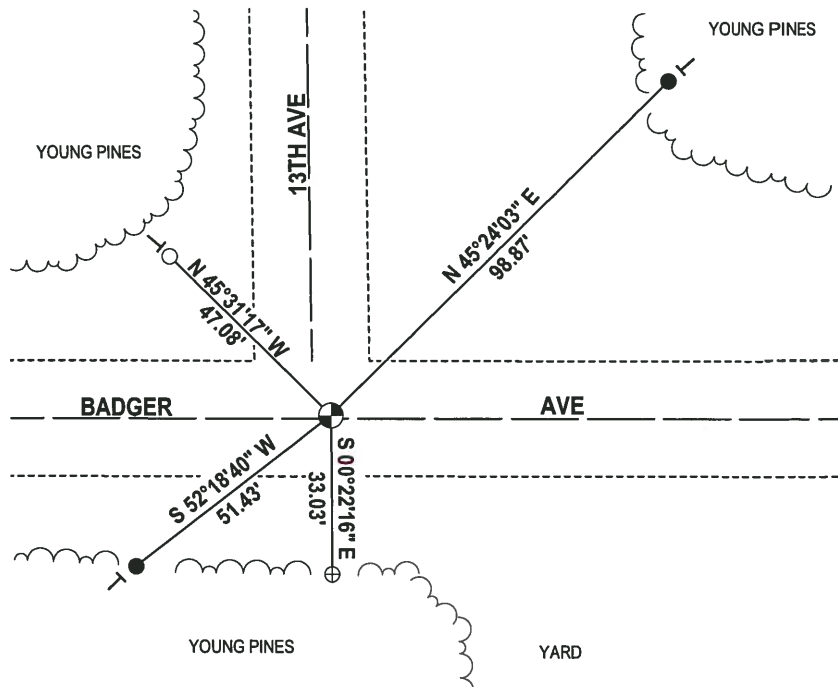
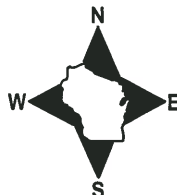
DATA SHOWN HERE ON THIS TIE SHEET IS CORRECT AND COMPLETE TO THE BEST OF MY KNOWLEDGE AND BELIEF.

PROFESSIONAL LAND SURVEYOR

DATE 3-1-18

- TIE SKETCH

NOTE: THE CORNER FALLS 1½ NORTH OF THE CENTERLINE OF BADGER AVE AND 4½ EAST OF THE CENTERLINE OF 13TH AVE.

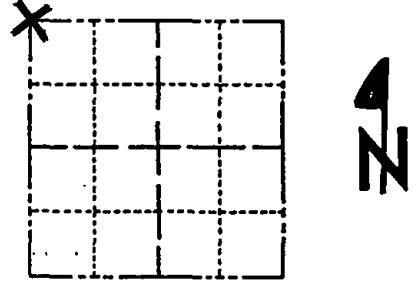


- 3/4" IRON REBAR FOUND
- ⊕ 2-3/8" O.D. IRON PIPE FOUND
- 3/4" x 18" IRON REBAR SET, 1.50#/FT
- ⊙ HARRISON FOUND
- └ VINYL "T" POST

Government Land Corner Certificate

ADAMS County
 TYPE OF MONUMENT: Harrison standard
 STATE PLANE COORDINATES: N _____
 E _____
 ELEVATION — M.S.L. DATUM: _____
 THETA ANGLE: _____
 FIELD BOOK: _____ PAGE _____
 DRAWN BY: _____

CORNER NO. 6
 SECTION 5
 TOWN 19
 RANGE 6



LOCATION
 (Indicated by 'X')

BASIS FOR MONUMENT LOCATION

Show info such as: History of corner, with reference to Vol. and pg., dates, surveyor; exact description of monument replaced; if location computed, by taped or EDM traverse; landowner remarks, etc. (Use reverse side if necessary)

SEAL:

This is an updated tie sheet to show ties in place after monument was reset following road construction. *AUG, 2000*

DATA SHOWN HERE ON CERTIFIED CORRECT:

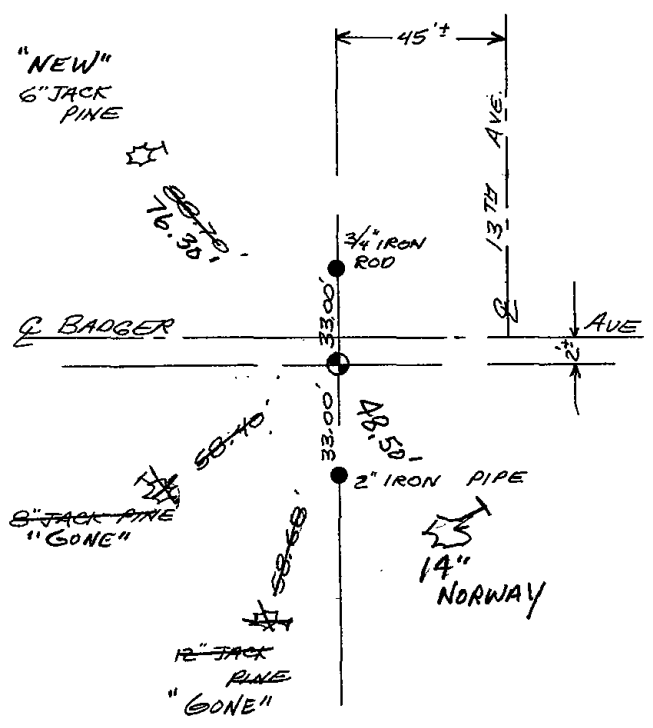
Registered Land Surveyor

DATE: _____

TIE SKETCH

Show at least four ties, also fence lines, roads, topo, size and type of witness trees and if off road - best way to arrive at corner.

HARRISON RESET 6-10-99.
 SEE TIE SHEET BY D. HAGEN, DATED 1-17-76 FOR ADDITIONAL INFORMATION.



MAINTENANCE RECORD

Date	Init.	Remarks
12-30-02	JG	3-GONE, 2-NEW, PK @ CORNER
2/12/08	GR	OK

ADAMS COUNTY

Survey Monument Record

TYPE OF MONUMENT: Standard Harrison

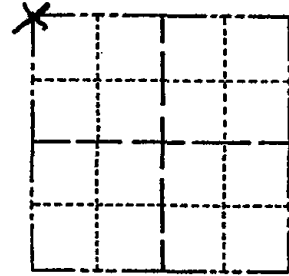
STATE PLANE COORDINATES: N _____
E _____

ELEVATION — M.S.L. DATUM: _____

THETA ANGLE: _____

FIELD BOOK: _____ PAGE _____

CORNER NO. 905 ³
SECTION 5
TOWN 19
RANGE 6



LOCATION
(Indicated by 'X')

SEAL:



BASIS FOR MONUMENT LOCATION

(Use reverse side if necessary)

Show info such as: History of corner, with reference to Vol. and pg, dates, surveyor; exact description of monument replaced; if location computed, by taped or EDM traverse; landowner remarks, etc.

Ran EDM/transit traverse around Sections 4, 5 and parts of 3 and 6 to determine search areas, but excavation with backhoe yielded no evidence of the original corner or any remonumentation.

Set corner proportional to original notes between the Northwest corner of Section 6 and the Northeast corner of Section 4.

- OK 11-24-78 SS-DA
- " 3-11-83 GR-SS
- OK 1-26-88 GR
- OK 1-6-93 JG-BS

2-GONE, 3-NEW, MON. OK, 2-12-98-JG

CERTIFIED CORRECT:

Dale C. Hagen
Registered Land Surveyor

DATE: January 17, 1976

TIE SKETCH

(Show at least four ties)

NOTE:

Ties in trees to nail in disc.

