

32 SECTION 20 TOWN 06 RANGE

# ADAMS COUNTY

COUNTY CORNER NO: 125  
ROMPORTOL ID: 42006320000

## PUBLIC LAND SURVEY MONUMENT RECORD

TYPE OF MONUMENT: HARRISON (BROKEN-TOP)  
ADAMS COUNTY COORDINATES, NAD 83 (2007)

N. 287592.884

E. 536070.582

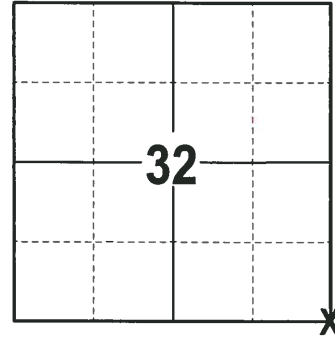
ELEVATION-      DATUM     

FIELD WORK DATE: 02/07/2018

### BASIS FOR MONUMENT LOCATION

1976 - PLS 1103 RAN EDM/TRANSIT TRAVERSE AROUND SECTIONS 4, 5 AND PARTS OF 3 AND 6 TO DETERMINE SEARCH AREAS. COULD NOT FIND ANY EVIDENCE OF THE ORIGINAL CORNER OR ANY REMONUMENTATION. CALCULATED THE CORNER PROPORTIONAL TO THE ORIGINAL NOTES BETWEEN THE NORTHWEST CORNER OF SECTION 6 AND THE NORTHEAST CORNER OF SECTION 4. SET A HARRISON MONUMENT AND TIED OUT.

2018 - PLS 2994 FOUND A HARRISON MONUMENT WITH A BROKEN-TOP 12" BELOW THE ROAD SURFACE. FOUND NO EVIDENCE OF ANY OF THE WITNESSES. ACCEPTED THE HARRISON MONUMENT WITH A BROKEN-TOP AS THE BEST EVIDENCE OF THE CORNER LOCATION. SET 4 NEW TIES AND MEASURED TO THE TIES.



LOCATION  
(INDICATE CORNER BY "X")

SEAL:



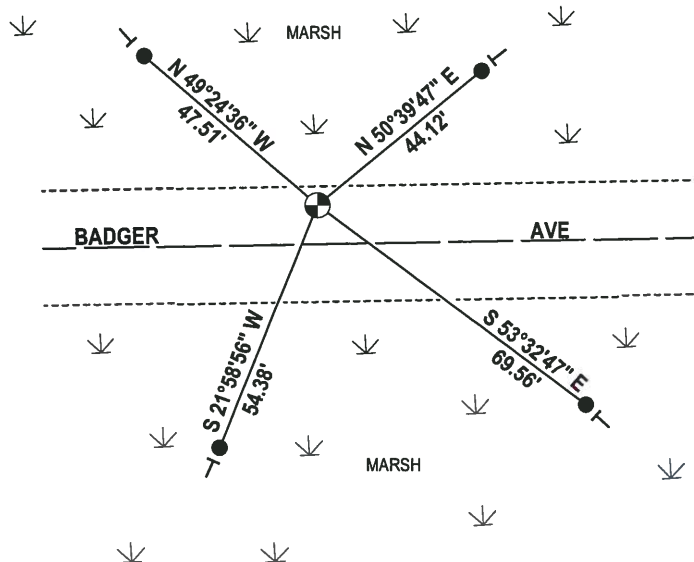
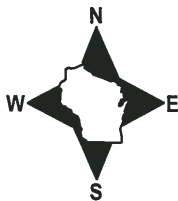
DATA SHOWN HERE ON THIS TIE SHEET IS CORRECT AND COMPLETE TO THE BEST OF MY KNOWLEDGE AND BELIEF.

PROFESSIONAL LAND SURVEYOR

DATE 3-1-18

### - TIE SKETCH -

NOTE: THE CORNER FALLS 8± NORTH OF THE CENTERLINE OF BADGER AVE.



- 3/4" x 48" IRON REBAR SET, 1.50#/FT
- ⊕ HARRISON (BROKEN-TOP) FOUND
- └ VINYL "T" POST

ADAMS COUNTY

Survey Monument Record

TYPE OF MONUMENT: Standard Harrison

STATE PLANE COORDINATES: N \_\_\_\_\_

E \_\_\_\_\_

ELEVATION — M.S.L. DATUM: \_\_\_\_\_

THETA ANGLE: \_\_\_\_\_

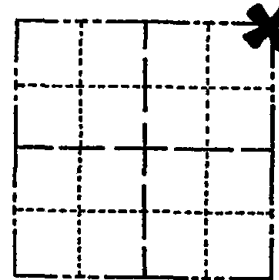
FIELD BOOK: \_\_\_\_\_ PAGE \_\_\_\_\_

CORNER NO. 906 <sup>(5)</sup>

SECTION 5

TOWN 19

RANGE 6



LOCATION  
(Indicated by 'X')

SEAL:



BASIS FOR MONUMENT LOCATION

(Use reverse side if necessary)

Show info such as: History of corner, with reference to Vol. and pg, dates, surveyor; exact description of monument replaced; if location computed, by taped or EDM traverse; landowner remarks, etc.

Ran EDM/transit traverse around Sections 4, 5 and parts of 3 and 6 to determine search areas.

Could find no evidence of the original corner or any remonumentation.

Set corner proportional to original notes between the Northwest corner of Section 6 and the Northeast corner of Section 4.

- OK 11-24-78 DA-SS
- " 4-13-83 GR-SS
- " 1-26-88 GR
- ALL OK 1-6-93 JG-85
- OK, 2-12-98 -JG
- OK, 1-28-03 -JG

CERTIFIED CORRECT:

*Dale C. Hagen*

Registered Land Surveyor

DATE: January 17, 1976

TIE SKETCH *DK 11-14-07 JG-85*

(Show at least four ties)

NOTE:

Ties in trees to nail in disc.

