

33  
SECTION

20  
TOWN

06  
RANGE

# ADAMS COUNTY

COUNTY CORNER NO: 126  
ROMPORTOL ID: 42006330020

## PUBLIC LAND SURVEY MONUMENT RECORD

TYPE OF MONUMENT: HARRISON (BROKEN-TOP)  
ADAMS COUNTY COORDINATES, NAD 83 (2007)

N. 287613.973

E. 538707.213

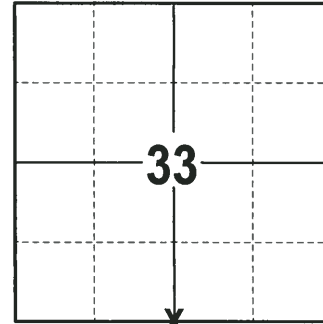
ELEVATION-      -      -      DATUM      -      -     

FIELD WORK DATE: 02/07/2018

### BASIS FOR MONUMENT LOCATION

1976 - PLS 1103 RAN EDM/TRANSIT TRAVERSE AROUND SECTIONS 4, 5 AND PARTS OF 3 AND 6 TO DETERMINE SEARCH AREAS. EXCAVATION BY A.B. KIEDROWSKI, COUNTY SURVEYOR, YIELDED NO EVIDENCE OF THE ORIGINAL CORNER OR ANY REMONUMENTATION. CALCULATED THE CORNER ON A LINE AND PROPORTIONALLY BETWEEN THE ADJACENT SECTION CORNERS. SET A HARRISON MONUMENT AND TIED OUT.

2018 - PLS 2994 FOUND A HARRISON MONUMENT WITH A BROKEN-TOP 6" BELOW THE ROAD SURFACE. FOUND NO EVIDENCE OF ANY OF THE WITNESSES. ACCEPTED THE HARRISON MONUMENT WITH A BROKEN-TOP AS THE BEST EVIDENCE OF THE CORNER LOCATION. SET 4 NEW TIES AND MEASURED TO THE TIES.



LOCATION  
(INDICATE CORNER BY "X")

SEAL:



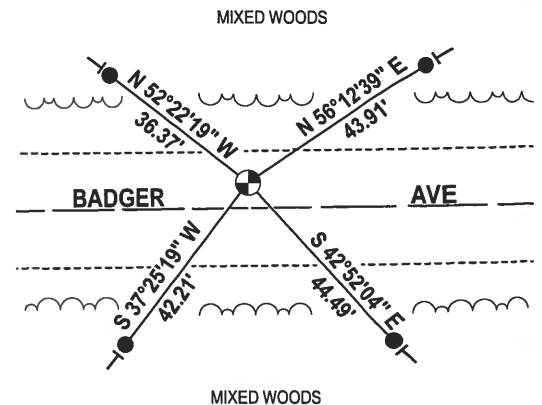
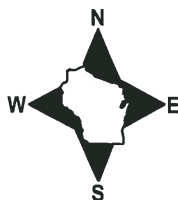
DATA SHOWN HERE ON THIS TIE SHEET IS CORRECT AND COMPLETE TO THE BEST OF MY KNOWLEDGE AND BELIEF.

PROFESSIONAL LAND SURVEYOR

DATE 3-1-18

### - TIE SKETCH -

NOTE: THE CORNER FALLS 5± NORTH OF THE CENTERLINE OF BADGER AVE.



- 3/4" x 18" IRON REBAR SET, 1.50#/FT
- ⊕ HARRISON (BROKEN-TOP) FOUND
- VINYL "T" POST

ADAMS COUNTY

Survey Monument Record

TYPE OF MONUMENT: Standard Harrison

STATE PLANE COORDINATES: N \_\_\_\_\_  
E \_\_\_\_\_

ELEVATION — M.S.L. DATUM: \_\_\_\_\_

THETA ANGLE: \_\_\_\_\_

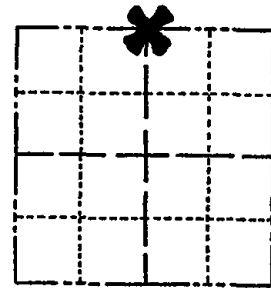
FIELD BOOK: \_\_\_\_\_ PAGE \_\_\_\_\_

CORNER NO. 785 (6)

SECTION 4

TOWN 19

RANGE 6



LOCATION  
(Indicated by 'X')

SEAL:



BASIS FOR MONUMENT LOCATION

(Use reverse side if necessary)

Show info such as: History of corner, with reference to Vol. and pg, dates, surveyor; exact description of monument replaced; if location computed, by taped or EDM traverse; landowner remarks, etc.

Ran EDM/transit traverse around Sections 4,5 and parts of 3 and 6 to determine search areas.

Excavation by A.B.Kiedrowski, County Surveyor, yielded no evidence of the original corner or any remonumentation.

Set corner on line and proportionally between the adjacent section corners.

- OK 11-24-78 DA-SS
- " 4-13-83 GR-SS
- " 1-26-88 GR
- " 1-6-93 SG-BS
- OK 2-12-98-JG
- OK 1-28-03-JG

CERTIFIED CORRECT:

*Dale C. Hagen*  
Registered Land Surveyor

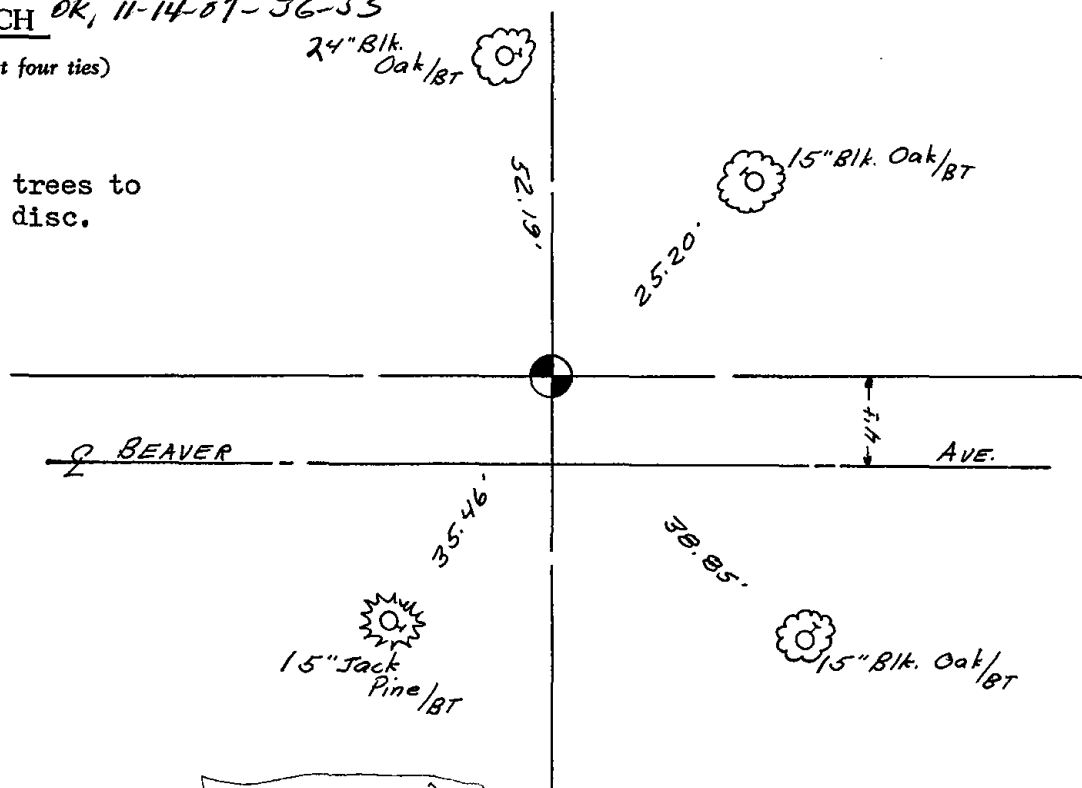
DATE: January 17, 1976

TIE SKETCH OK, 11-14-07-JG-SS

(Show at least four ties)

NOTE

Ties in trees to nail in disc.



This replaces the dated 9/2/73