

06  
SECTION

19  
TOWN

06  
RANGE

# ADAMS COUNTY

COUNTY CORNER NO: 15

ROMPORTOL ID: 41906062000

## PUBLIC LAND SURVEY MONUMENT RECORD

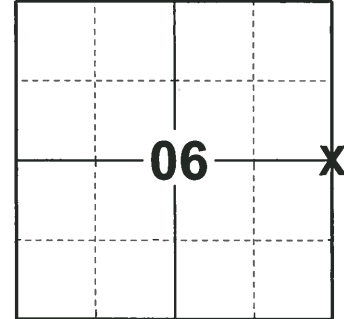
TYPE OF MONUMENT: 3/4" IRON ROD  
ADAMS COUNTY COORDINATES, NAD 83 (2007)

N. 284889.803

E. 530815.478

ELEVATION- \_\_\_\_\_ DATUM \_\_\_\_\_

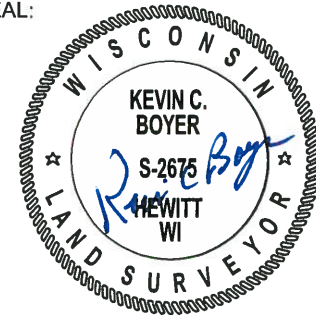
FIELD WORK DATE: 11/28/2018



### LOCATION

(INDICATE CORNER BY "X")

SEAL:



DATA SHOWN HERE ON THIS TIE SHEET IS CORRECT AND COMPLETE TO THE BEST OF MY KNOWLEDGE AND BELIEF.

PROFESSIONAL LAND SURVEYOR

DATE 1-18-19

### BASIS FOR MONUMENT LOCATION

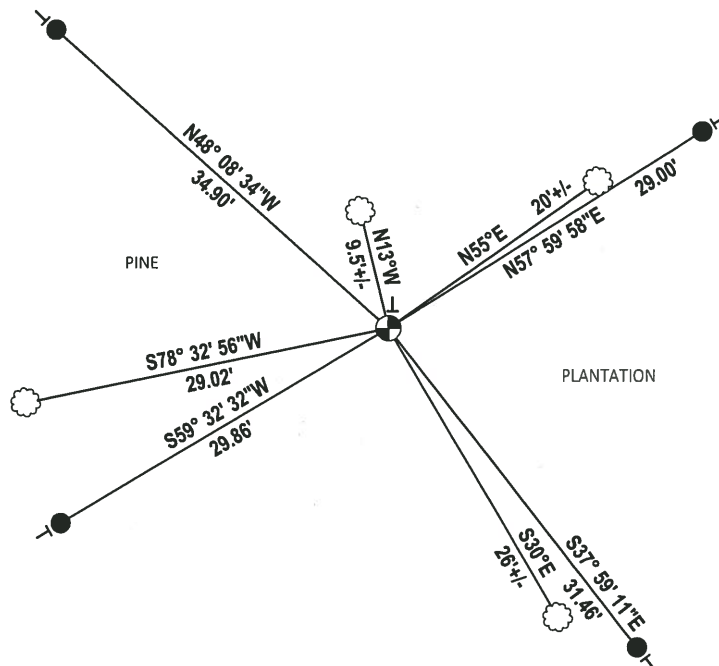
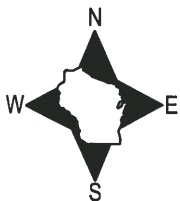
1975 - PLS 1103 RAN EDM/TRANSIT TRAVERSE AROUND SECTIONS 4, 5 AND 6 TO DETERMINE SEARCH AREAS FOR INVESTIGATION. FOUND NO EVIDENCE OF THE ORIGINAL CORNER OR ANY REMONUMENTATION. CALCULATED THE CORNER LOCATION ON LINE AND PROPORTIONATE TO ORIGINAL GOVERNMENT NOTES BETWEEN ADJACENT SECTION CORNERS. SET A HARRISON MONUMENT AT THE CALCULATED LOCATION AND TIED OUT.

1996 - PLS 1478 THIS CORNER WAS SET BY DALE HAGEN FOR KIEDROWSKI ENGINEERING INC. ON LINE AND AT PROPORTIONATE DISTANCE BETWEEN THE ADJACENT SECTION CORNERS. NEKOOSA PAPER CO. EMPLOYEES BROUGHT IT TO MY ATTENTION THAT THE CORNER WAS NOT SET CORRECTLY IN THE FIELD AND THAT THE SURVEYS IN THE AREA SEEMED TO FIT THE SECTION SUMMARY. I TRAVERSED THE SECTION AND FOUND THE MONUMENT TO HAVE BEEN SET ERRONEOUSLY BY 203.99 FEET. THIS TIE SHEET REFLECTS THE CORRECT LOCATION FOR THE MONUMENT.

2018 - PLS 2675 FOUND A 3/4" IRON ROD 2" ABOVE THE GROUND SURFACE AND 4 WITNESS TREES. THE MONUMENT AGREES WITH THE EXISTING WITNESS TREES. ACCEPTED THE 3/4" IRON ROD AS THE CORNER LOCATION. SET 4 NEW TIES AND MEASURED TO THE TIES AND WITNESS TREES.

### TIE SKETCH

NOTE: THE CORNER FALLS 105'± NORTHEAST OF THE CENTERLINE OF THE TRAIL.



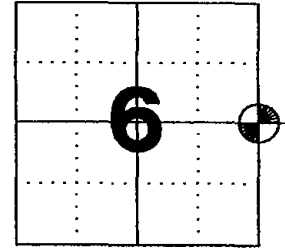
- SET 3/4" x 18" IRON REBAR, 1.50#/FT
- ⊕ FOUND 3/4" IRON ROD
- | VINYL "T" POST
- ☼ WITNESS TREE

# U.S PUBLIC LAND SURVEY MONUMENT RECORD ADAMS COUNTY, WISCONSIN

CORNER NO. 15  
SECTION 6  
TOWN 19N  
RANGE 6E

TYPE OF MONUMENT: ~~HARRISON STANDARD~~ 3/4" Rod

STATE PLANE COORDINATES: N: NOT APPLICABLE  
E: NOT APPLICABLE  
ELEVATION \_ MSL DATUM: NOT APPLICABLE  
THETA ANGLE: NOT APPLICABLE  
FIELD BOOK: 55 PAGE 76  
DRAWN BY: GREG RHINEHART



LOCATION

### BASIS FOR MONUMENT LOCATION

THIS CORNER WAS SET BY DALE HAGEN FOR KIEDROWSKI ENGINEERING INC. ON LINE AND AT PROPORTIONATE DISTANCE BETWEEN THE ADJACENT SECTION CORNERS. NEKOOSA PAPER CO. EMPLOYEES BROUGHT IT TO MY ATTENTION THAT THE CORNER WAS NOT SET CORRECTLY IN THE FIELD AND THAT THE SURVEYS IN THE AREA SEEMED TO FIT THE SECTION SUMMARY. I TRAVERSED THE SECTION AND FOUND THE MONUMENT TO HAVE BEEN SET ERRONEOUSLY BY 203.99 FEET. THIS TIE SHEET REFLECTS THE CORRECT LOCATION FOR THE MONUMENT.

### SEAL



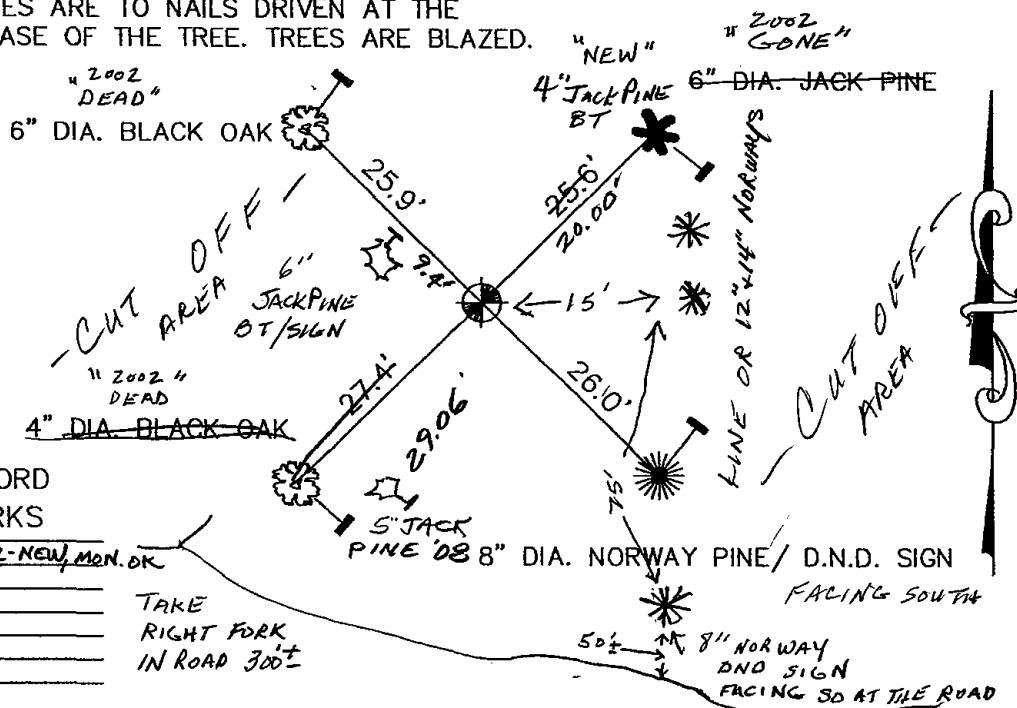
DATA SHOWN HEREON  
CERTIFIED CORRECT:

*Gregory P. Rhinehart*

REGISTERED LAND SURVEYOR  
DATE: JANUARY 16, 1996

### TIE SKETCH

TIES ARE TO NAILS DRIVEN AT THE BASE OF THE TREE. TREES ARE BLAZED.



### MAINTENANCE RECORD

DATE	INIT.	REMARKS
12-30-02	JG	2-GONE, 2-NEW, MON. OK
2-21-08	JS-GR	1 NEW

TAKE  
RIGHT FORK  
IN ROAD 300±

8" DIA. NORWAY PINE / D.N.D. SIGN  
FACING SOUTH  
8" NORWAY  
DND SIGN  
FACING SD AT THE ROAD

ADAMS COUNTY

Survey Monument Record

TYPE OF MONUMENT: Standard Harrison

STATE PLANE COORDINATES: N \_\_\_\_\_  
E \_\_\_\_\_

ELEVATION — M.S.L. DATUM: \_\_\_\_\_

THETA ANGLE: \_\_\_\_\_

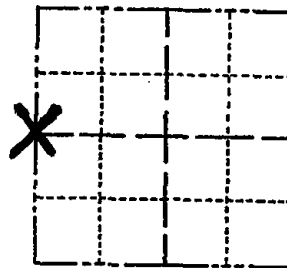
FIELD BOOK: \_\_\_\_\_ PAGE \_\_\_\_\_

CORNER NO. 908 <sup>(15)</sup>

SECTION 5

TOWN 19

RANGE 6



LOCATION  
(Indicated by 'X')

SEAL:



BASIS FOR MONUMENT LOCATION

(Use reverse side if necessary)

Show info such as: History of corner, with reference to Vol. and pg. dates, surveyor; exact description of monument replaced; if location computed, by taped or EDM traverse; landowner remarks, etc.

Ran EDM/transit traverse around Sections 4, 5 and 6 to determine search areas for investigation.

Could find no evidence of the original corner or any remonumentation.

Set corner on line and proportionate to original government notes between adjacent section corners.

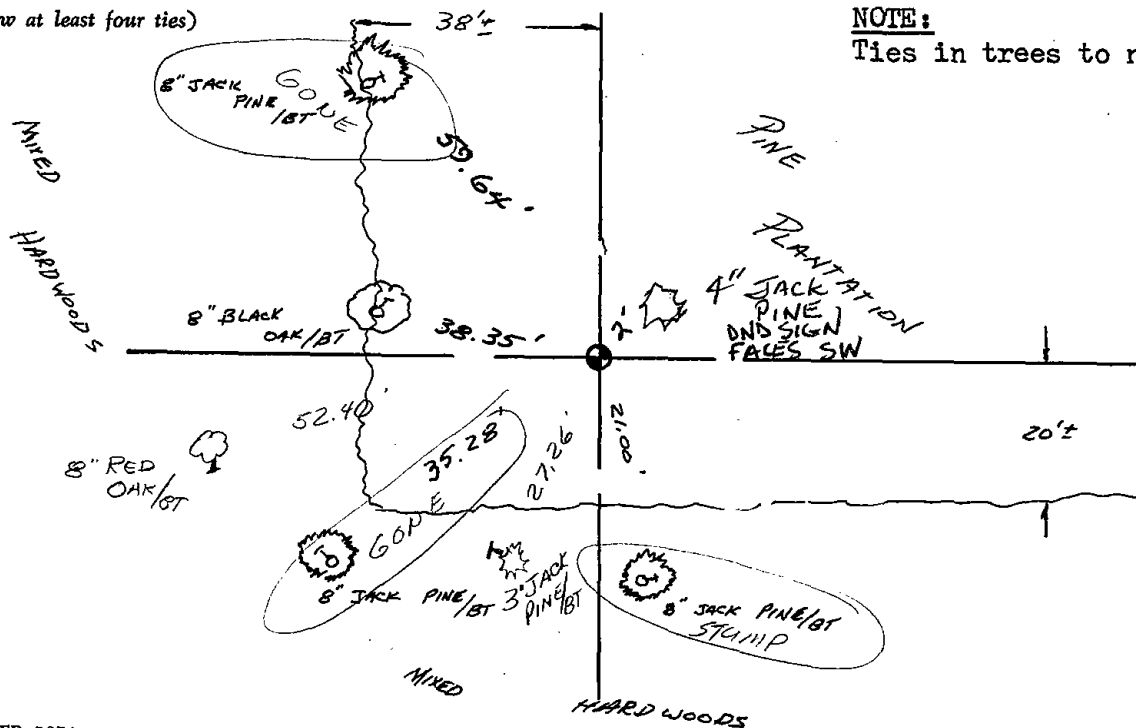
RETIED 11-29-78 RN-DA  
OK 3-29-83 GR-SS  
1-NEW TIE 1-7-93 JG-BS

CERTIFIED CORRECT:

*Dale C. Hagen*  
Registered Land Surveyor  
DATE: December 2, 1975

TIE SKETCH

(Show at least four ties)



NOTE:

Ties in trees to nail in disc.

