

05
SECTION

19
TOWN

06
RANGE

ADAMS COUNTY

COUNTY CORNER NO: 16

ROMPORTOL ID: 41906052000

PUBLIC LAND SURVEY MONUMENT RECORD

TYPE OF MONUMENT: HARRISON
ADAMS COUNTY COORDINATES, NAD 83 (2007)

N. 284963.739

E. 536099.256

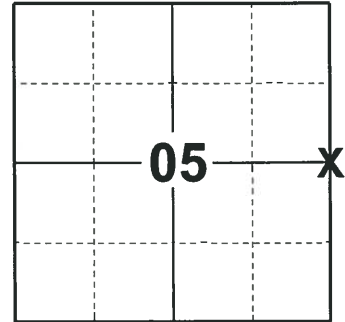
ELEVATION- _____ DATUM _____

FIELD WORK DATE: 11/28/2018

BASIS FOR MONUMENT LOCATION

1976 - PLS 1103 RAN EDM/TRANSIT TRAVERSE AROUND SECTIONS 4, 5 AND PORTIONS OF 3 AND 6 TO DETERMINE SEARCH AREAS. FOUND NO EVIDENCE OF THE ORIGINAL CORNER OR ANY REMONUMENTATION. CALCULATED THE CORNER LOCATION ON LINE AND PROPORTIONAL TO ORIGINAL NOTES BETWEEN ADJACENT SECTION CORNERS. SET A HARRISON MONUMENT AT THE CALCULATED LOCATION AND TIED OUT.

2018 - PLS 2675 FOUND A HARRISON MONUMENT 3" ABOVE THE GROUND SURFACE AND 3 WITNESS TREES. THE MONUMENT AGREES WITH THE EXISTING WITNESS TREES. ACCEPTED THE HARRISON MONUMENT AS THE CORNER LOCATION. SET 4 NEW TIES AND MEASURED TO THE TIES AND WITNESS TREES.



LOCATION

(INDICATE CORNER BY "X")

SEAL:



DATA SHOWN HERE ON THIS TIE SHEET IS CORRECT AND COMPLETE TO THE BEST OF MY KNOWLEDGE AND BELIEF.

PROFESSIONAL LAND SURVEYOR

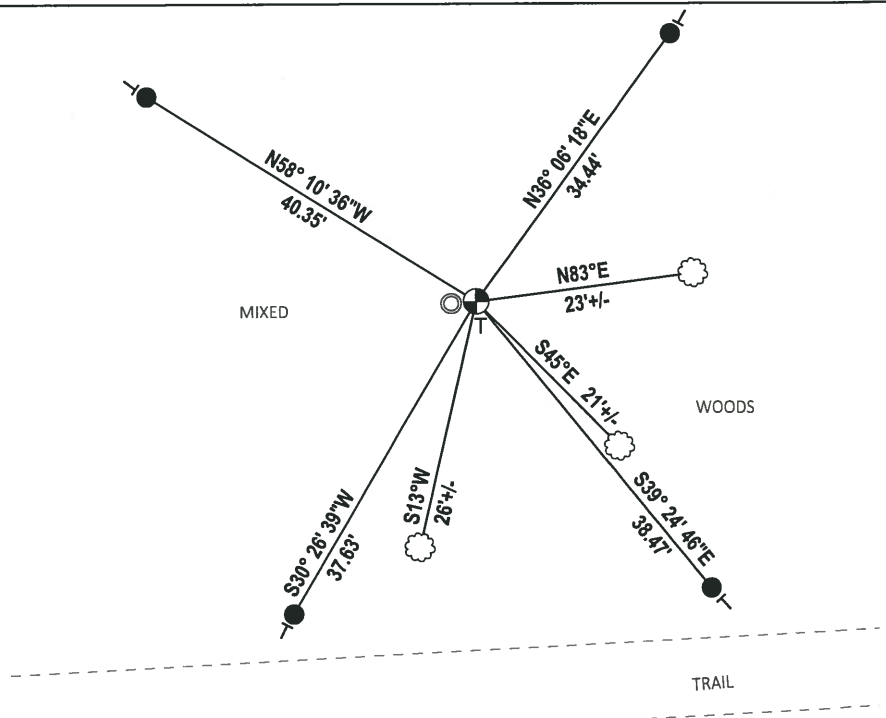
DATE 1-18-19

TIE SKETCH

NOTE: THE CORNER FALLS 48± NORTH OF THE CENTERLINE OF THE TRAIL.



- SET 3/4" x 18" IRON REBAR, 1.50#/FT
- FOUND 1-1/4" x 5' O.D. IRON PIPE
- ⊕ FOUND HARRISON MONUMENT
- VINYL "T" POST
- ☼ WITNESS TREE



ADAMS COUNTY

Survey Monument Record

TYPE OF MONUMENT: Standard Harrison

STATE PLANE COORDINATES: N _____

E _____

ELEVATION — M.S.L. DATUM: _____

THETA ANGLE: _____

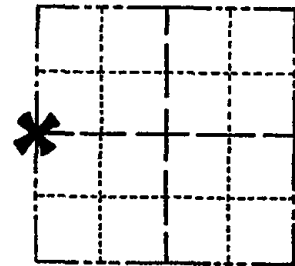
FIELD BOOK: _____ PAGE _____

CORNER NO. 137

SECTION 4

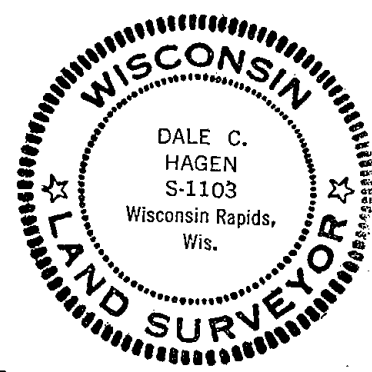
TOWN 19

RANGE 6



LOCATION
(Indicated by 'X')

SEAL:



BASIS FOR MONUMENT LOCATION

(Use reverse side if necessary)

Show info such as: History of corner, with reference to Vol. and pg, dates, surveyor; exact description of monument replaced; if location computed, by taped or EDM traverse; landowner remarks, etc.

Ran EDM/transit traverse around Sections 4, 5 and parts of 3 and 6, to determine search areas.

Could find no evidence of the original corner or any remonumentation.

Set corner on line and proportional to original notes between adjacent section corners.

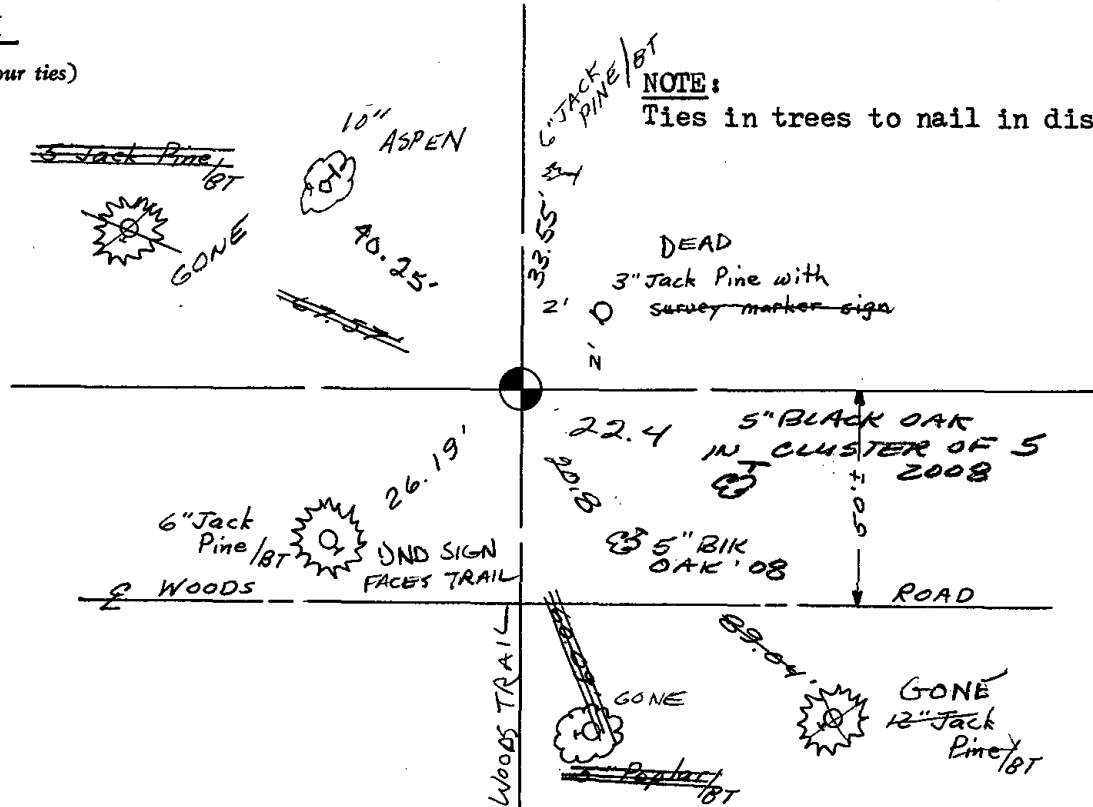
Corner R = 70-417
 Set in '72
 Stone call 6
 for 1153

Cor. OK 11-29-78 RN-DA
 " 4-24-83 GR-SS 1 NEW TIE
 2-GONE, 2-NEW TIES 1-7-93 JG-RS
 ALL OK 4-10-98 JG-SS
 2 NEW TIES Nov '08 SS

CERTIFIED CORRECT:
Dale C. Hagen
 Registered Land Surveyor
 DATE: January 17, 1976

TIE SKETCH

(Show at least four ties)



NOTE:
 Ties in trees to nail in disc.

