

PUBLIC LAND SURVEY MONUMENT RECORD

TYPE OF MONUMENT: HARRISON
 ADAMS COUNTY COORDINATES, NAD 83 (2007)

N. 282254.745

E. 525535.168

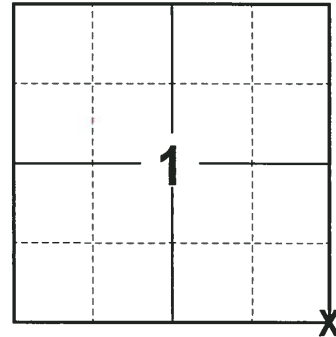
ELEVATION- DATUM

FIELD WORK DATE: 01/17/2018

BASIS FOR MONUMENT LOCATION

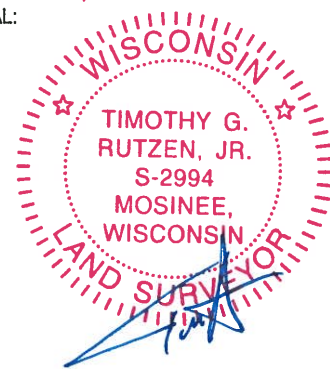
1976 - PLS 1103 RAN AN EDM/TRANSIT TRAVERSE AROUND SECTION 6 AND 7 TO DETERMINE THE SEARCH AREAS FOR INVESTIGATION. EXCAVATION WITH A BACKHOE YIELDED NO EVIDENCE OF THE ORIGINAL CORNER OR ANY REMONUMENTATION. CALCULATED THE LOCATION OF THE CORNER ON A LINE AND PROPORTIONAL TO THE ORIGINAL NOTES BETWEEN THE NORTHWEST CORNER OF SECTION 6 AND THE SOUTHWEST CORNER OF SECTION 7. SET A HARRISON MONUMENT AT THE CALCULATED LOCATION AND TIED OUT.

2018 - PLS 2994 FOUND A HARRISON MONUMENT 3" BELOW THE ROAD SURFACE AND 1 WITNESS. THE MONUMENT AGREES WITH THE EXISTING WITNESS. ACCEPTED THE HARRISON MONUMENT AS THE CORNER LOCATION. SET 4 NEW TIES AND MEASURED TO THE TIES AND WITNESS.



LOCATION
 (INDICATE CORNER BY "X")

SEAL:



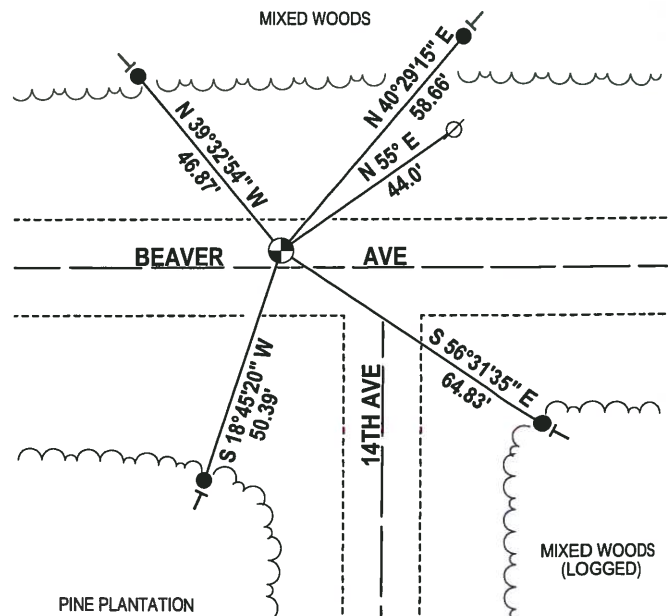
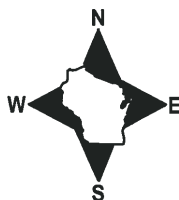
DATA SHOWN HERE ON THIS TIE SHEET IS CORRECT AND COMPLETE TO THE BEST OF MY KNOWLEDGE AND BELIEF.

PROFESSIONAL LAND SURVEYOR

DATE 3-1-18

- TIE SKETCH -

NOTE: THE CORNER FALLS 3½ NORTH OF THE CENTERLINE OF BEAVER AVE AND 21½ WEST OF THE CENTERLINE OF 14TH AVE.



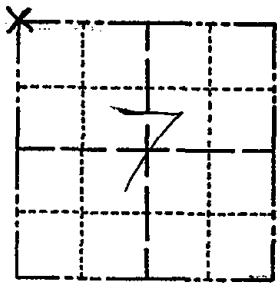
- 3/4" x 18" IRON REBAR SET, 1.50#/FT
- ⊙ HARRISON FOUND
- ⊘ WITNESS POWER POLE FOUND
- VINYL "T" POST

ADAMS COUNTY

Survey Monument Record

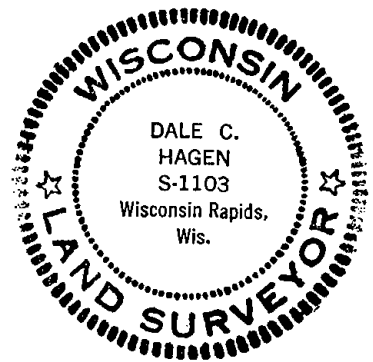
TYPE OF MONUMENT: Harrison
STATE PLANE COORDINATES: N
E
ELEVATION - M.S.L. DATUM:
THETA ANGLE:
FIELD BOOK: FILE PAGE

CORNER NO. 954 (21)
SECTION 7
TOWN 19
RANGE 6



LOCATION (Indicated by 'X')

SEAL:



BASIS FOR MONUMENT LOCATION

(Use reverse side if necessary)

Show info such as: History of corner, with reference to Vol. and pg, dates, surveyor; exact description of monument replaced; if location computed, by taped or EDM traverse; landowner remarks, etc.

Ran EDM/transit traverse around Section 7 and 6 to determine the search areas for investigation.

Excavation with backhoe yielded no evidence of the original corner or any remonumentation.

Set corner on line and proportional to original notes between the Northwest corner of Sec 6 and the Southwest corner of Section 7.

Handwritten notes: OK 11-24-78 DA-55, 3-29-83 GR-55 2 NEW TIES, 1-26-88 O.K. GR, 3-GONE, 4-NEW TIES 1-6-93 JG-B5, 1-GONE, 4-LEFT, 2-11-98-JG, 1-GONE, 2-NEW, ANN. OK 12-31-02-JG

CERTIFIED CORRECT:

Signature of Dale C. Hagen, Registered Land Surveyor

DATE: January 17, 1976

TIE SKETCH 2/12/08 GPR OK

(Show at least four ties)

NOTE:

Ties in trees to nail in disc.

NOTE:

Ties in trees to nail in disc.

