

06
SECTION

19
TOWN

06
RANGE

ADAMS COUNTY

COUNTY CORNER NO: 22

ROMPORTOL ID: 41906060020

PUBLIC LAND SURVEY MONUMENT RECORD

TYPE OF MONUMENT: HARRISON
ADAMS COUNTY COORDINATES, NAD 83 (2007)

N. 282255.603

E. 528188.185

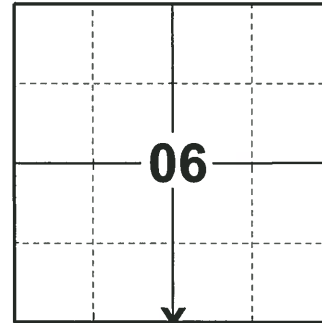
ELEVATION- DATUM

FIELD WORK DATE: 11/28/2018

BASIS FOR MONUMENT LOCATION

1976 - PLS 1103 RAN EDM/TRANSIT TRAVERSE AROUND SECTIONS 6, 7 AND ADJACENT SECTIONS IN TOWN 19 NORTH, RANGE 5 EAST, TO DETERMINE THE SEARCH AREAS FOR INVESTIGATION. EXCAVATION WITH A BACKHOE YIELDED NO EVIDENCE OF THE ORIGINAL CORNER OR ANY REMONUMENTATION. CALCULATED THE CORNER LOCATION ON LINE AND PROPORTIONAL TO THE ORIGINAL NOTES BETWEEN THE ADJACENT SECTION CORNERS. SET A HARRISON MONUMENT AT THE CALCULATED LOCATION AND TIED OUT.

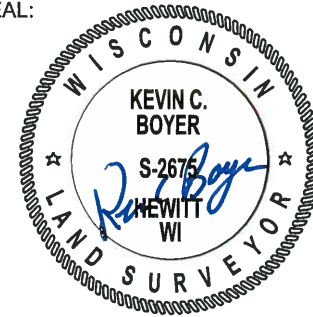
2018 - PLS 2675 FOUND A HARRISON MONUMENT 4" BELOW THE ROAD SURFACE AND 2 WITNESSES. THE MONUMENT AGREES WITH THE EXISTING TIES AND WITNESSES. ACCEPTED THE HARRISON MONUMENT AS THE CORNER LOCATION. SET 4 NEW TIES AND MEASURED TO THE TIES AND WITNESSES.



LOCATION

(INDICATE CORNER BY "X")

SEAL:



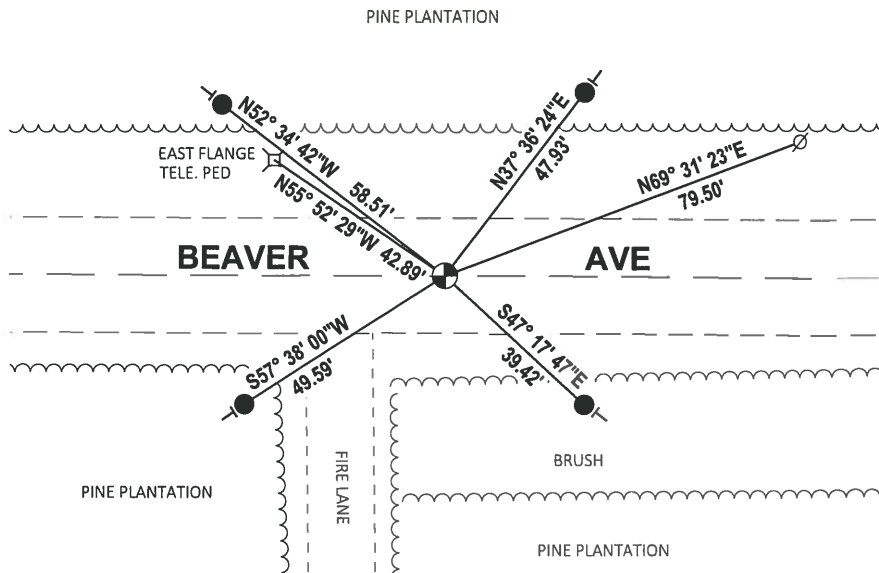
DATA SHOWN HERE ON THIS TIE SHEET IS CORRECT AND COMPLETE TO THE BEST OF MY KNOWLEDGE AND BELIEF.

PROFESSIONAL LAND SURVEYOR

DATE 1-18-19

TIE SKETCH

NOTE: THE CORNER FALLS ON THE CENTERLINE OF BEAVER AVE.



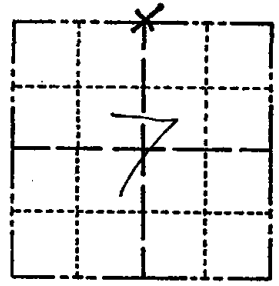
- SET 3/4" x 18" IRON REBAR, 1.50#/FT
- FOUND HARRISON MONUMENT
- ∅ WITNESS POWER POLE
- VINYL "T" POST

ADAMS COUNTY

Survey Monument Record

TYPE OF MONUMENT: Harrison
 STATE PLANE COORDINATES: N _____
 E _____
 ELEVATION — M.S.L. DATUM: _____
 THETA ANGLE: _____
 FIELD BOOK: FILE PAGE _____

CORNER NO. 955
 SECTION 7
 TOWN 19
 RANGE 6



LOCATION
(Indicated by 'X')

BASIS FOR MONUMENT LOCATION

(Use reverse side if necessary)

Show info such as: History of corner, with reference to Vol. and pg, dates, surveyor; exact description of monument replaced; if location computed, by taped or EDM traverse; landowner remarks, etc.

SEAL:



Ran EDM/transit traverse around sections 6, 7- and the adjacent sections in Town 19 North, Range 5 East, to determine the search areas for investigation.

Excavation with backhoe yielded no evidence of the original corner or any remonumentation.

Set corner on line and proportional to the original notes between the adjacent section corners.

3-11-83 OK GR-SS
 4-GONE, 4-NEW TIES 1-6-93 JG-B5
 OK, 2-11-98-JG
 OK, 12-30-02-JG
 OK-2/12/08 GPR

CERTIFIED CORRECT:

Dale C. Hagen

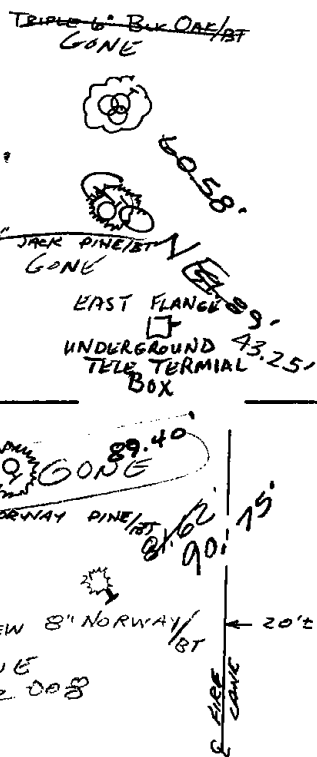
Registered Land Surveyor
 DATE: January 17, 1976

TIE SKETCH

(Show at least four ties)

NOTE:

Ties in trees to nail in disc.



NOTE:

Ties in trees to nail in disc.

