

06
SECTION

19
TOWN

06
RANGE

ADAMS COUNTY

COUNTY CORNER NO: 23

ROMPORTOL ID: 41906060000

PUBLIC LAND SURVEY MONUMENT RECORD

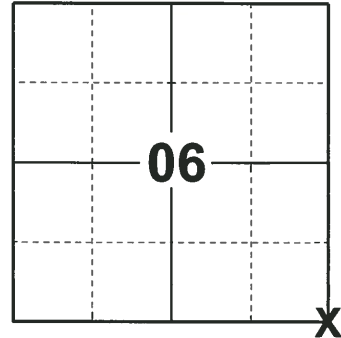
TYPE OF MONUMENT: HARRISON (BROKEN-TOP)
ADAMS COUNTY COORDINATES, NAD 83 (2007)

N. 282256.503

E. 530833.550

ELEVATION- DATUM

FIELD WORK DATE: 11/28/2018



LOCATION

(INDICATE CORNER BY "X")

SEAL:



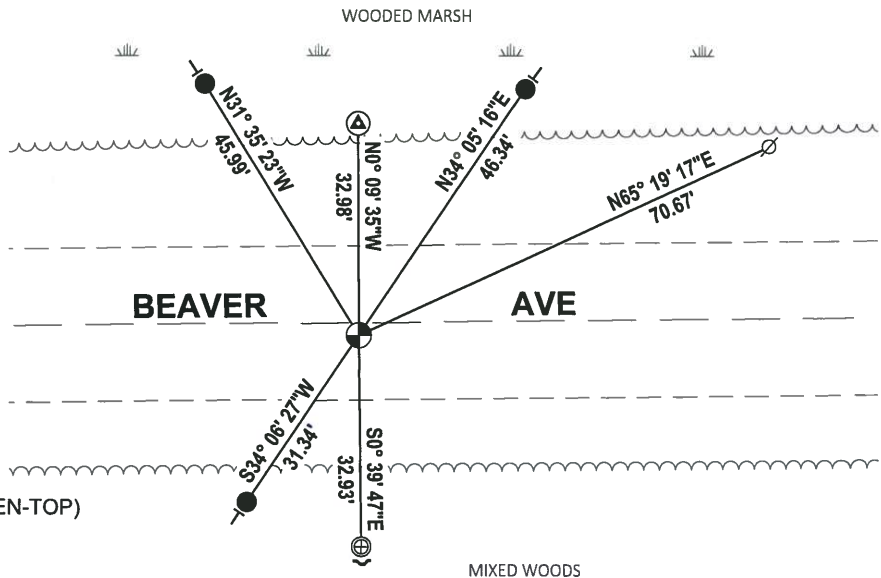
DATA SHOWN HERE ON THIS TIE SHEET IS CORRECT AND COMPLETE TO THE BEST OF MY KNOWLEDGE AND BELIEF.

PROFESSIONAL LAND SURVEYOR

DATE 1-18-19

TIE SKETCH

NOTE: THE CORNER FALLS 2± SOUTH OF THE CENTERLINE OF BEAVER AVE.



- SET 3/4" x 18" IRON REBAR, 1.50#/FT
- ⊕ FOUND 4" x 4" CONCRETE MONUMENT
- ⊕ FOUND 1" O.D. IRON PIPE
- ⊕ FOUND HARRISON MONUMENT (BROKEN-TOP)
- ⊕ WITNESS POWER POLE
- ↙ STEEL FENCE POST
- VINYL "T" POST

ADAMS COUNTY

Survey Monument Record

TYPE OF MONUMENT: HARRISON MONUMENT

STATE PLANE COORDINATES: N _____

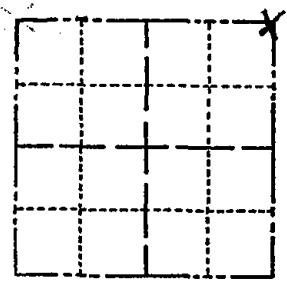
E _____

ELEVATION — M.S.L. DATUM: _____

THETA ANGLE: _____

FIELD BOOK: _____ PAGE _____

CORNER NO. 453
SECTION 7
TOWN 18
RANGE 6



LOCATION
(Indicated by 'X')

SEAL:



CERTIFIED CORRECT
Dale C Hagen
Registered Land Surveyor
DATE: July 31, 1974

BASIS FOR MONUMENT LOCATION

(Use reverse side if necessary)

Show info such as: History of corner, with reference to Vol. and pg, dates, surveyor; exact description of monument replaced; if location computed, by taped or EDM traverse; landowner remarks, etc.

Found Railroad spike in pavement 33.00 feet South of 4" by 4" concrete monument. Traversed East Line of Section 7, after which the location of the Railroad spike was accepted as the corner.

Replaced Railroad Spike with Standard Harrison Monument.

- OK 11-24-78 DA-SS
- " 3-11-83 GR-SS
- OK 2-1-88 GR-SS
- 1-6-93 ALL OK JG-BS
- OK, 2-11-98 - JG
- 2-GONE, 4-NEW, TOP BROKEN OFF, 12-30-02 - JG

TIE SKETCH *1 new 2/11/08 GPR*

(Show at least four ties)

NOTE: Ties in trees to Nail in disc. Those trees indicated by "BT" have letters BT scribed in face toward corner.

