

05 SECTION    19 TOWN    06 RANGE

# ADAMS COUNTY

COUNTY CORNER NO: 24  
ROMPORTOL ID: 41906050020

## PUBLIC LAND SURVEY MONUMENT RECORD

TYPE OF MONUMENT: COTTON GIN SPINDLE  
ADAMS COUNTY COORDINATES, NAD 83 (2007)

N. 282290.244

E. 533480.583

ELEVATION- \_\_\_\_\_ DATUM \_\_\_\_\_

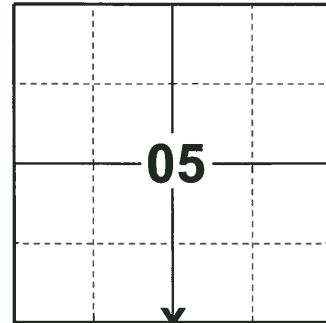
FIELD WORK DATE: 11/28/2018

### BASIS FOR MONUMENT LOCATION

1976 - PLS 1103 RAN EDM/TRANSIT TRAVERSE AROUND SECTIONS 4, 5 AND PORTIONS OF 3 AND 6 TO DETERMINE SEARCH AREAS. FOUND NO EVIDENCE OF THE ORIGINAL CORNER BECAUSE THE SEARCH AREA FELL WITHIN THE CONCRETE PAVEMENT OF STATE HIGHWAY 13. FOR THIS REASON NO EXCAVATION WAS ATTEMPTED. CALCULATED THE CORNER LOCATION BY RECONSTRUCTION FROM SURVEY BY SAM T. MULLEN IN THE NORTHWEST QUARTER OF SECTION 5. SET A HARRISON MONUMENT AT THE CALCULATED LOCATION AND TIED OUT.

2008 - PLS 1452 FOUND "PK" NAIL ON 9-8-2008, PRIOR TO 2008 RESURFACING PROJECT. SET NEW REFERENCE MONUMENTS (4" ALUMINUM DISKS SET IN CONCRETE) ON 10-2-2018. RE-SET SECTION CORNER ON 11-3-2008 AND MEASURED TO TIES.

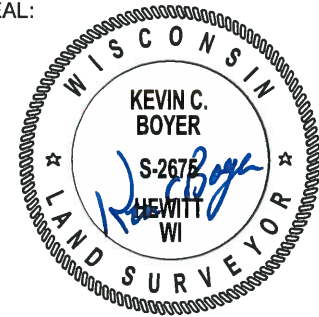
2018 - PLS 2675 FOUND A COTTON GIN SPINDLE IN THE ROAD SURFACE AND 4 TIES. THE MONUMENT AGREES WITH THE EXISTING TIES. ACCEPTED THE COTTON GIN SPINDLE AS THE CORNER LOCATION AND RE-MEASURED TO THE EXISTING TIES.



**LOCATION**

(INDICATE CORNER BY "X")

SEAL:



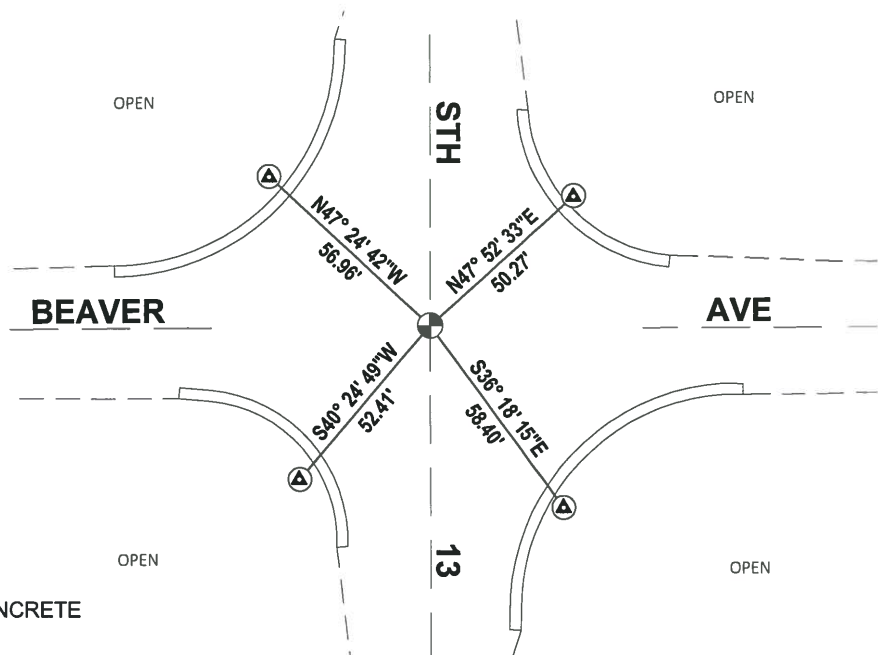
DATA SHOWN HERE ON THIS TIE SHEET IS CORRECT AND COMPLETE TO THE BEST OF MY KNOWLEDGE AND BELIEF.

PROFESSIONAL LAND SURVEYOR

DATE 1-18-19

### TIE SKETCH

NOTE: THE CORNER FALLS ON THE CENTERLINE OF STH 13 AND 1 1/2 NORTH OF THE CENTERLINE OF BEAVER AVE.



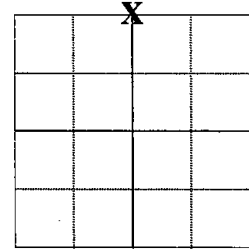
- ▲ FOUND WISDOT ALUMINUM CAP IN CONCRETE
- FOUND COTTON GIN SPINDLE

# ADAMS COUNTY

## Survey Monument Record

TYPE OF MONUMENT: Berntsen Nail  
 STATE PLANE COORDINATES: N \_\_\_\_\_  
 E \_\_\_\_\_  
 ELEVATION — M.S.L. DATUM: \_\_\_\_\_  
 THETA ANGLE: \_\_\_\_\_  
 FIELD BOOK: \_\_\_\_\_ PAGE \_\_\_\_\_  
 DRAWN BY: D. Christie

CORNER NO. 24  
 SECTION 8  
 TOWN 19 N  
 RANGE 6 E



LOCATION  
(Indicated by 'X')

### BASIS FOR MONUMENT LOCATION

(Use reverse side if necessary)

Show info such as: History of corner, with reference to Vol. and pg. dates, surveyor; exact description of monument replaced; if location computed, by taped or EDM traverse; landowner remarks, etc.

SEAL:



Found "PK" nail on 9-8-2008, prior to 2008 Resurfacing Project. Set new reference monuments (4" Alum. Disks set in concrete) on 10-2-2008. Re-set section corner on 11-3-2008 and measured Ties.

*SEE DALE HAGEN TIE SHEET 01-17-76*

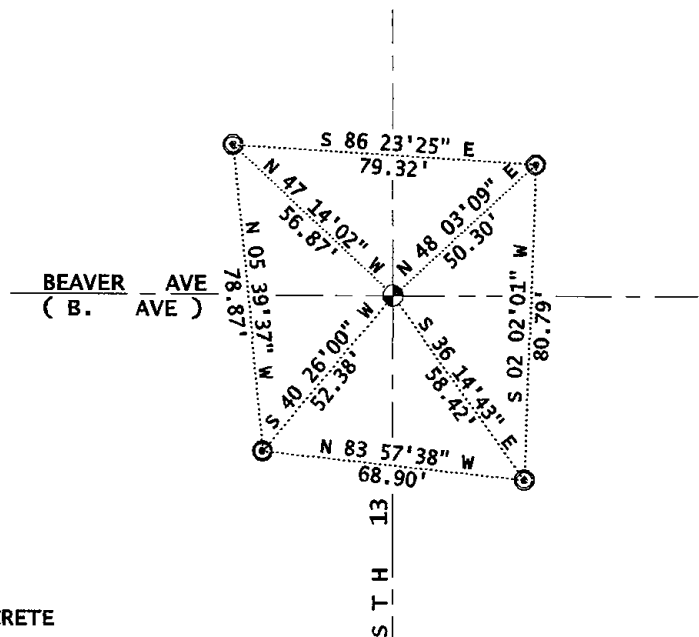
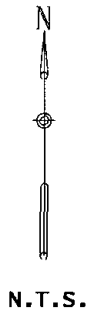
CERTIFIED CORRECT:

*Dennis J. Christie*  
 Registered Land Surveyor

Date: 12-12-2008

### TIE SKETCH

(Show at least four ties)



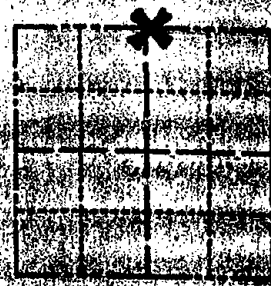
ADAMS COUNTY

Survey Monument Record

TYPE OF MONUMENT: Railroad Spike with Chisel Cross  
STATE PLANE COORDINATES: N \_\_\_\_\_  
E \_\_\_\_\_

CORNER NO. 909  
SECTION 6  
TOWN 13  
RANGE 6

ELEVATION - M.S.L. DATUM: \_\_\_\_\_  
THETA ANGLE: \_\_\_\_\_  
FIELD BOOK: \_\_\_\_\_ PAGE \_\_\_\_\_



LOCATION (Indicated by "X")

SEAL



BASIS FOR MONUMENT LOCATION

(Use reverse side if necessary)

Show info such as: History of corner, with reference to Vol and pg. dates, surveyor; exact description of monument replaced, if location computed, by taped or EDM traverse; landowner remarks, etc.

Ran EDM/transit traverse around Sections 4, 5 and parts of 3 and 6 to determine the search areas.

Could find no evidence of the original corner because the search area fell with the concrete pavement of State Highway 13. For this reason no excavation was attempted.

Set corner by reconstruction from survey by Sam T. Mullen in the Northwest Quarter of Section 5.

OK 3-11-81 GRS  
OK 2-1-81 G-5  
3-GONE, 4-NEW 2/24/98 JG-55  
OK 5-19-03 JG-55

CERTIFIED CORRECT:

*Dale C. Hagen*  
Registered Land Surveyor

DATE: January 17, 1976

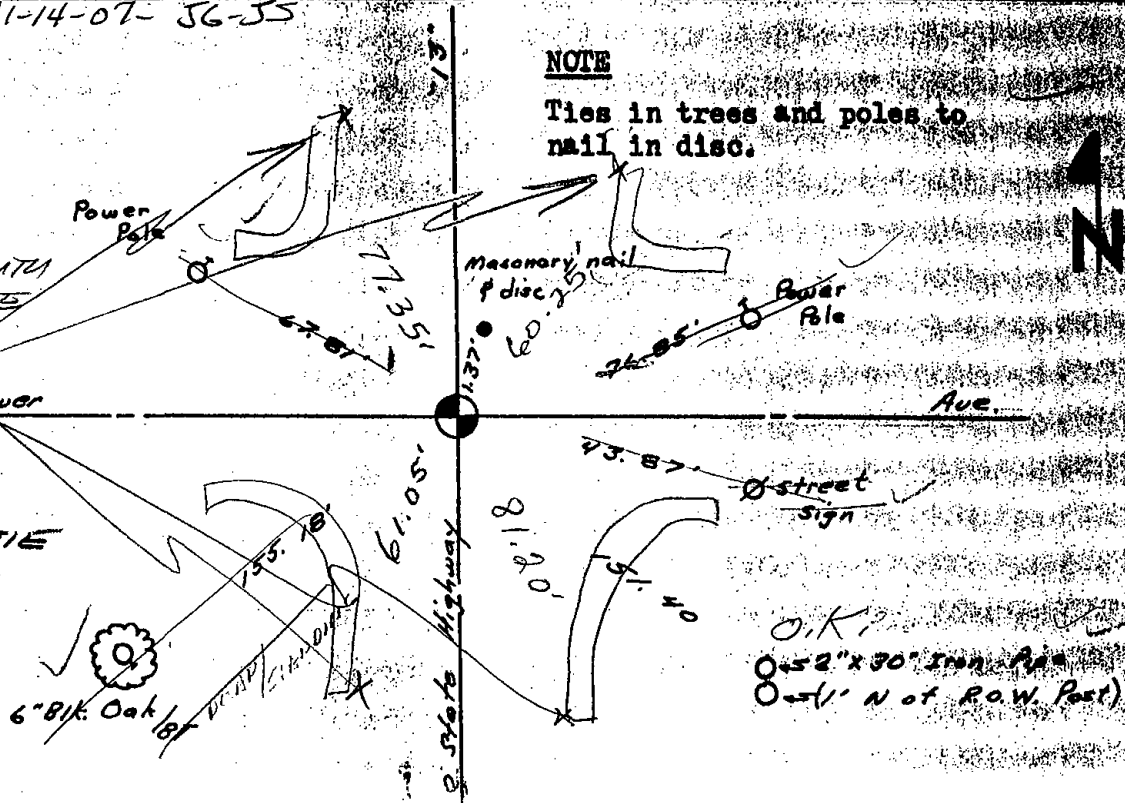
TIE SKETCH OK, 11-14-07- JG-55

(Show at least four ties)

Fd RR SAK

SET AK. NAIL IN BIT. AT SOUTH END CONCRETE BUTTERS

SEE 12-12-08 UPDATE DENNIS CHRISTIE



NOTE

Ties in trees and poles to nail in disc.

O.K.?  
0-52" x 30" Iron Pipe  
0-51" N of R.O.W. Post