

05 SECTION 19 TOWN 06 RANGE

ADAMS COUNTY

COUNTY CORNER NO: 25
 ROMPORTOL ID: 41906050000

PUBLIC LAND SURVEY MONUMENT RECORD

TYPE OF MONUMENT: HARRISON (BROKEN-TOP)
 ADAMS COUNTY COORDINATES, NAD 83 (2007)

N. 282324.129

E. 536127.681

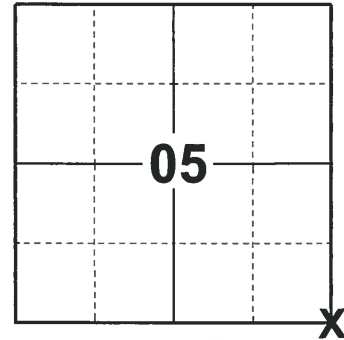
ELEVATION- _____ DATUM _____

FIELD WORK DATE: 11/27/2018

BASIS FOR MONUMENT LOCATION

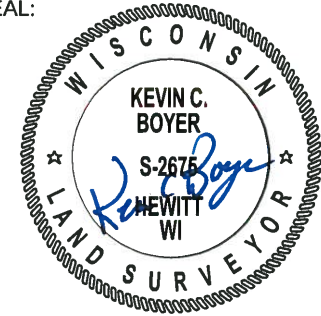
1976 - PLS 1103 RAN EDM/TRANSIT TRAVERSE AROUND SECTIONS 4, 5 AND PORTIONS OF 3 AND 6 TO DETERMINE SEARCH AREAS. EXCAVATION YIELDED NO EVIDENCE OF THE ORIGINAL CORNER OR ANY REMONUMENTATION. CALCULATED THE CORNER LOCATION BY DOUBLING OVER LINE BETWEEN THE SOUTHWEST AND SOUTH QUARTER CORNER OF SECTION 5. SET A HARRISON MONUMENT AT THE CALCULATED LOCATION AND TIED OUT.

2018 - PLS 2675 FOUND A HARRISON MONUMENT WITH A BROKEN-TOP IN THE ROAD SURFACE AND 3 WITNESSES. THE MONUMENT AGREES WITH THE EXISTING WITNESSES. ACCEPTED THE HARRISON MONUMENT WITH A BROKEN-TOP AS THE CORNER LOCATION. SET 4 NEW TIES AND MEASURED TO THE TIES AND WITNESSES.



LOCATION
 (INDICATE CORNER BY "X")

SEAL:



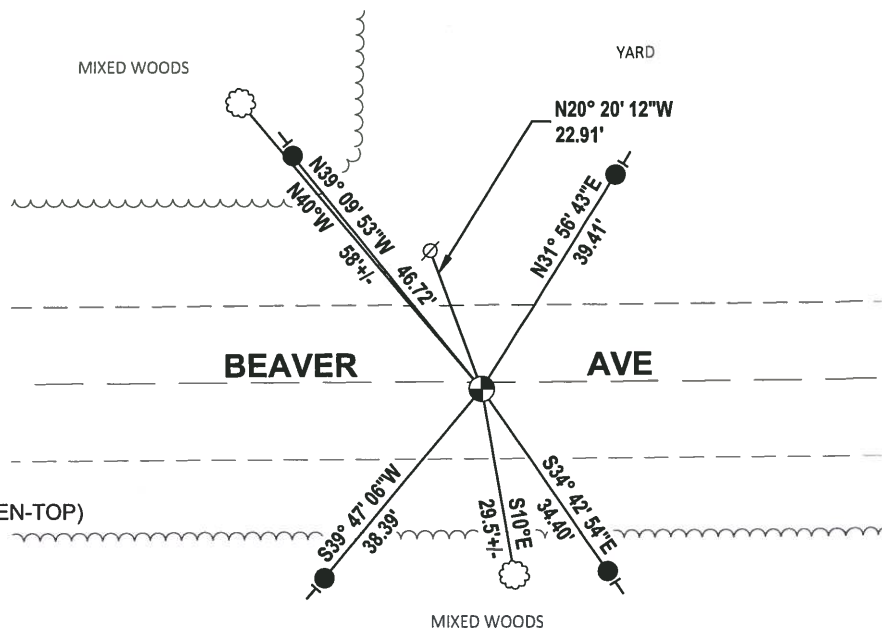
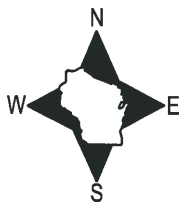
DATA SHOWN HERE ON THIS TIE SHEET IS CORRECT AND COMPLETE TO THE BEST OF MY KNOWLEDGE AND BELIEF.

PROFESSIONAL LAND SURVEYOR

DATE 1-18-19

TIE SKETCH

NOTE: THE CORNER FALLS 1± SOUTH OF THE CENTERLINE OF BEAVER AVE.



- SET 3/4" x 18" IRON REBAR, 1.50#/FT
- ⊕ FOUND HARRISON MONUMENT (BROKEN-TOP)
- ⊙ WITNESS POWER POLE
- ┊ VINYL "T" POST
- ☁ WITNESS TREE

ADAMS COUNTY

Survey Monument Record

TYPE OF MONUMENT: Standard Harrison

STATE PLANE COORDINATES: N _____
E _____

ELEVATION — M.S.L. DATUM: _____

THETA ANGLE: _____

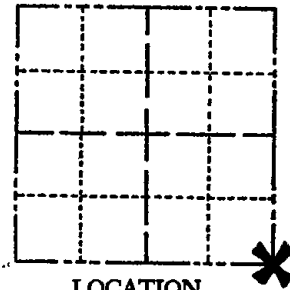
FIELD BOOK: _____ PAGE _____

CORNER NO. 907

SECTION 5

TOWN 19

RANGE 6



LOCATION
(Indicated by 'X')

SEAL:



BASIS FOR MONUMENT LOCATION

(Use reverse side if necessary)

Show info such as: History of corner, with reference to Vol. and pg, dates, surveyor; exact description of monument replaced; if location computed, by taped or EDM traverse; landowner remarks, etc.

Ran EDM/transit traverse around Sections 4, 5 and parts of 3 and 6 to determine search areas.

Excavation yielded no evidence of the original corner or any remonumentation.

Set corner by doubling over line between the Southwest and South Quarter corners of Section 5.

OK 11-24-78 DA-SS
" 3-11-83 GR-SS

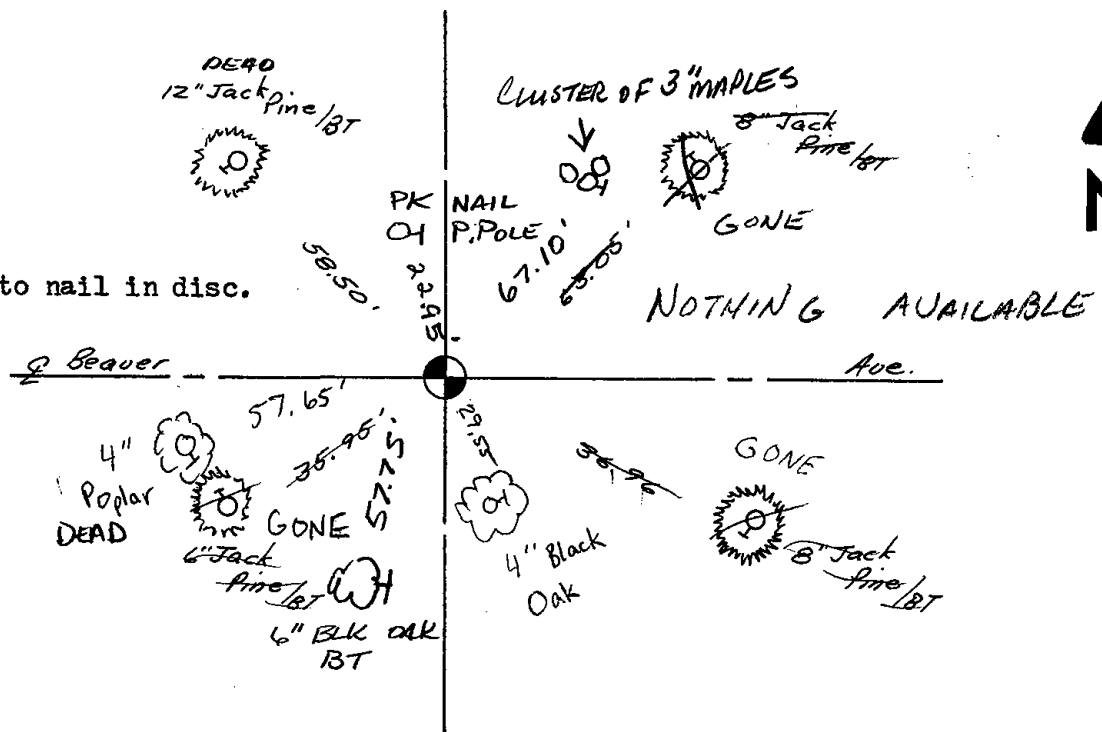
2-GONE, 2-NEW TIES, TOP OF MON. BROKEN OFF 1-6-93 JG-85
1-GONE, 1-NEW, MON. OK, 2-11-98-JG
OK, 1-24-03-JG
2-NEW TIE, 11-14-07-JG-JS

CERTIFIED CORRECT:

Dale C. Hagen
Registered Land Surveyor
DATE: January 17, 1976

TIE SKETCH

(Show at least four ties)



NOTE:

Ties in trees to nail in disc.