

04 SECTION 19 TOWN 06 RANGE

ADAMS COUNTY

COUNTY CORNER NO: 27
ROMPORTOL ID: 41906040000

PUBLIC LAND SURVEY MONUMENT RECORD

TYPE OF MONUMENT: HARRISON (BROKEN-TOP)
ADAMS COUNTY COORDINATES, NAD 83 (2007)

N. 282312.498

E. 541392.321

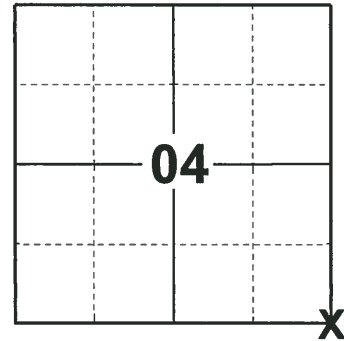
ELEVATION- _____ DATUM _____

FIELD WORK DATE: 11/27/2018

BASIS FOR MONUMENT LOCATION

1975 - PLS 1103 RAN EDM/TRANSIT TRAVERSE AROUND SECTIONS 4, 5 AND PORTIONS OF 3 AND 6 TO DETERMINE SEARCH AREAS. EXCAVATION WITH A BACKHOE YIELDED NO EVIDENCE OF THE ORIGINAL CORNER OR ANY REMONUMENTATION. CALCULATED THE CORNER LOCATION PROPORTIONAL TO ORIGINAL DISTANCES TO THE EAST AND WEST, MATCHING FIELD EVIDENCE TO THE EAST, AND MATCHING EVIDENCE TO THE NORTH AND SOUTH, THAT TO THE NORTH BEING THE RECOVERED NORTHEAST CORNER OF SECTION 4. SET A HARRISON MONUMENT AT THE CALCULATED LOCATION AND TIED OUT.

2018 - PLS 2675 FOUND A HARRISON MONUMENT WITH A BROKEN-TOP 6" BELOW THE ROAD SURFACE AND 2 WITNESSES. THE MONUMENT AGREES WITH THE EXISTING WITNESSES. ACCEPTED THE HARRISON MONUMENT WITH A BROKEN-TOP AS THE CORNER LOCATION. SET 4 NEW TIES AND MEASURED TO THE TIES AND WITNESSES.



LOCATION
(INDICATE CORNER BY "X")

SEAL:



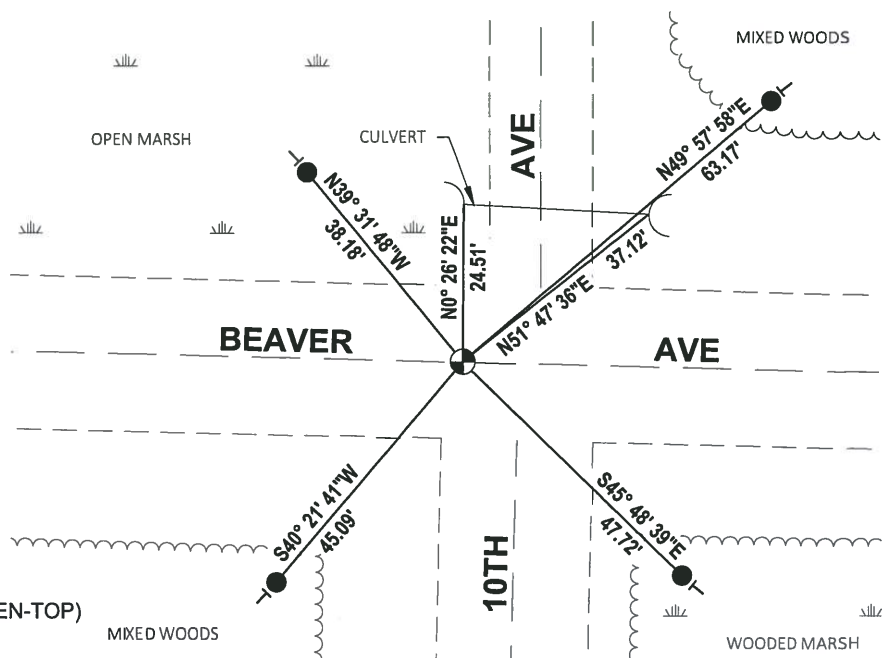
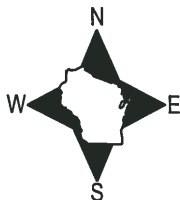
DATA SHOWN HERE ON THIS TIE SHEET IS CORRECT AND COMPLETE TO THE BEST OF MY KNOWLEDGE AND BELIEF.

PROFESSIONAL LAND SURVEYOR

DATE 1-18-19

TIE SKETCH

NOTE: THE CORNER FALLS ON THE CENTERLINE OF BEAVER AVE AND 10'± WEST OF THE CENTERLINE OF 10TH AVE.



- SET 3/4" x 18" IRON REBAR, 1.50#/FT
- ⊙ FOUND HARRISON MONUMENT (BROKEN-TOP)
- VINYL "T" POST

ADAMS COUNTY

Survey Monument Record

TYPE OF MONUMENT: Standard Harrison

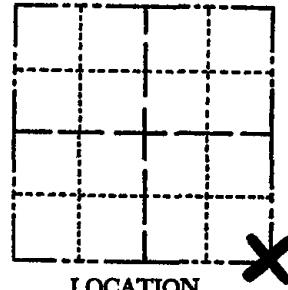
STATE PLANE COORDINATES: N _____
E _____

ELEVATION — M.S.L. DATUM: _____

THETA ANGLE: _____

FIELD BOOK: _____ PAGE _____

CORNER NO. 782
SECTION 4
TOWN 19
RANGE 6



LOCATION
(Indicated by 'X')

SEAL:

BASIS FOR MONUMENT LOCATION

(Use reverse side if necessary)

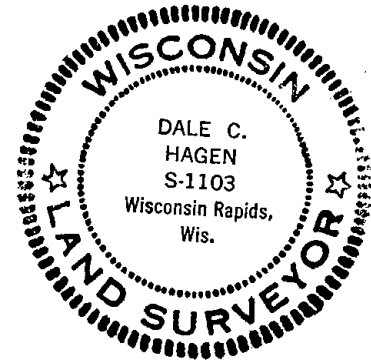
Show info such as: History of corner, with reference to Vol. and pg. dates, surveyor; exact description of monument replaced; if location computed, by taped or EDM traverse; landowner remarks, etc.

Ran EDM/transit traverse around Sections 4 and 5, and parts of Section 3 and 6, to determine search areas.

Excavation with backhoe yielded no evidence of the original corner or any remonumentation.

Set corner proportional to original distances to the East and West, matching field evidence to the East, and matching evidence to the North and South, that to the north being the recovered Northeast corner of Section 4.

- OK 11-24-78 DA-SS
- " 3-25-83 GR-SS
- " 2-1-88 GR-SS
- 1-GONE 1-5-93 JG-B5



CERTIFIED CORRECT:

Dale Hagen

Registered Land Surveyor

DATE: Sept. 2, 1975

TIE SKETCH OK, 2-12-98-JG

(Show at least four ties) OK, 1-24-03-JG
3-NEW TIES, 11-14-07-JG-SS

Note: ties to nail and bottlecap

