

03 SECTION 19 TOWN 06 RANGE

ADAMS COUNTY

COUNTY CORNER NO: 28
ROMPORTOL ID: 41906030020

PUBLIC LAND SURVEY MONUMENT RECORD

TYPE OF MONUMENT: HARRISON (BROKEN-TOP)
ADAMS COUNTY COORDINATES, NAD 83 (2007)

N. 282300.987

E. 544017.855

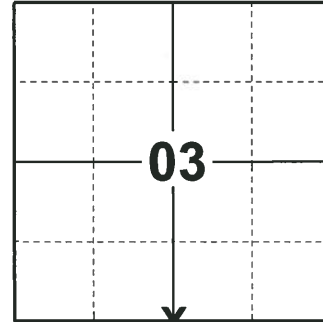
ELEVATION- - - DATUM - -

FIELD WORK DATE: 11/27/2018

BASIS FOR MONUMENT LOCATION

1976 - PLS 1103 RAN EDM/TRANSIT TRAVERSE AROUND SECTIONS 4, 5 AND PORTIONS OF 3 AND 6 TO DETERMINE SEARCH AREAS. FOUND NO EVIDENCE OF THE ORIGINAL CORNER OR ANY REMONUMENTATION. CALCULATED THE CORNER LOCATION ON LINE AND PROPORTIONALLY BETWEEN ADJACENT SECTION CORNERS. SET A HARRISON MONUMENT AT THE CALCULATED LOCATION AND TIED OUT.

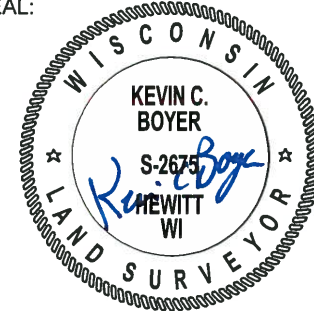
2018 - PLS 2675 FOUND A HARRISON MONUMENT WITH A BROKEN-TOP 12" BELOW THE ROAD SURFACE, 1 PROPERTY IRON AND 2 WITNESS TREES. THE MONUMENT AGREES WITH THE EXISTING WITNESS TREES. ACCEPTED THE HARRISON MONUMENT WITH A BROKEN-TOP AS THE CORNER LOCATION. SET 3 NEW TIES AND MEASURED TO THE TIES, PROPERTY IRON AND WITNESS TREES.



LOCATION

(INDICATE CORNER BY "X")

SEAL:



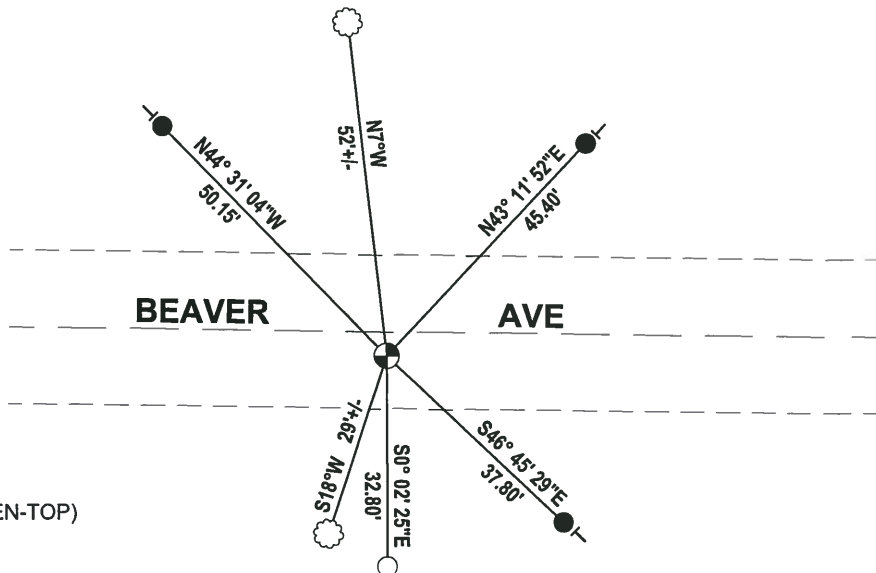
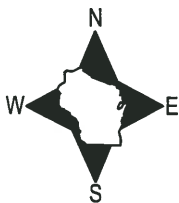
DATA SHOWN HERE ON THIS TIE SHEET IS CORRECT AND COMPLETE TO THE BEST OF MY KNOWLEDGE AND BELIEF.

PROFESSIONAL LAND SURVEYOR

DATE 1-18-19

- TIE SKETCH

NOTE: THE CORNER FALLS 4± SOUTH OF THE CENTERLINE OF BEAVER AVE.



- SET 3/4" x 18" IRON REBAR, 1.50#/FT
- FOUND 3/4" IRON ROD
- ⊕ FOUND HARRISON MONUMENT (BROKEN-TOP)
- VINYL "T" POST
- ☁ WITNESS TREE

ADAMS COUNTY

Survey Monument Record

TYPE OF MONUMENT: Standard Harrison

STATE PLANE COORDINATES: N _____

E _____

ELEVATION — M.S.L. DATUM: _____

THETA ANGLE: _____

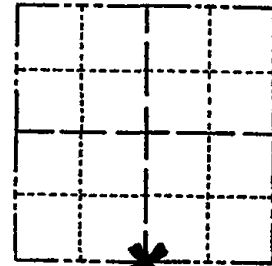
FIELD BOOK: _____ PAGE _____

CORNER NO. 136 (28)

SECTION 3

TOWN 19

RANGE 6



LOCATION
(Indicated by 'X')

SEAL:



BASIS FOR MONUMENT LOCATION

(Use reverse side if necessary)

Show info such as: History of corner, with reference to Vol. and pg, dates, surveyor; exact description of monument replaced; if location computed, by taped or EDM traverse; landowner remarks, etc.

Ran EDM/transit traverse around Sections 4, 5 and portions of 3 and 6 to determine search areas.

Could find no evidence of the original corner or any remonumentation.

Set corner on line and proportionally between the adjacent Section corners.

OK - 11-24-78 DA-SS
 3-25-83 GR-SS 1 TIE GONE
 2-1-88 GR-SS
 1-5-93 JG-BS ALL OK
 1-GONE, 2-NEW, TOP BROKEN OFF MON. 2-13-98-JC
 OK 1-24-03-JG

CERTIFIED CORRECT:

Dale C. Hagen
 Registered Land Surveyor

DATE: January 17, 1976

TIE SKETCH 1-GONE, 1-NEW, 11-14-07- JG-BS

(Show at least four ties)

