

01
SECTION

19
TOWN

06
RANGE

ADAMS COUNTY

COUNTY CORNER NO: 32

ROMPORTOL ID: 41906010020

PUBLIC LAND SURVEY MONUMENT RECORD

TYPE OF MONUMENT: HARRISON
ADAMS COUNTY COORDINATES, NAD 83 (2007)

N. 282347.026

E. 554545.258

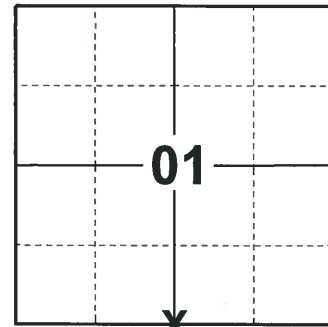
ELEVATION- _____ DATUM _____

FIELD WORK DATE: 11/26/2018

BASIS FOR MONUMENT LOCATION

1980 - PLS 1478 CALCULATED THE CORNER LOCATION EQUIDISTANT AND ON LINE BETWEEN ADJACENT SECTION CORNERS. THIS LOCATION MATCHES A SURVEY TO THE EAST BY PERRY - CARRINGTON, INC. EXCAVATION WITH A BACKHOE YIELDED NO EVIDENCE OF ANY PREVIOUS MONUMENTATION. SET A HARRISON MONUMENT AT THE CALCULATED LOCATION AND TIED OUT.

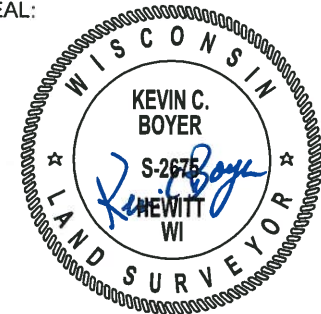
2018 - PLS 2675 FOUND A HARRISON MONUMENT 6" BELOW THE ROAD SURFACE, 1 TIE, 1 PROPERTY IRON AND 1 WITNESS. THE MONUMENT AGREES WITH THE EXISTING TIE AND WITNESS. ACCEPTED THE HARRISON MONUMENT AS THE CORNER LOCATION. SET 3 NEW TIES AND MEASURED TO THE TIES, PROPERTY IRON AND WITNESS.



LOCATION

(INDICATE CORNER BY "X")

SEAL:



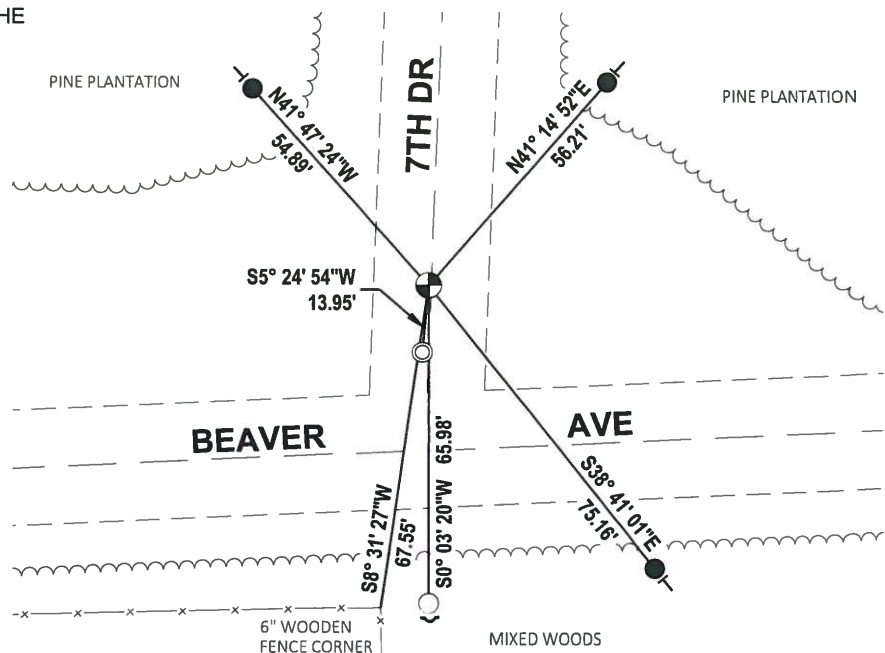
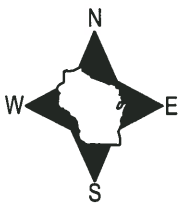
DATA SHOWN HERE ON THIS TIE SHEET IS CORRECT AND COMPLETE TO THE BEST OF MY KNOWLEDGE AND BELIEF.

PROFESSIONAL LAND SURVEYOR

DATE 1-18-19

TIE SKETCH

NOTE: THE CORNER FALLS 1'± WEST OF THE CENTERLINE OF 7TH AVE AND 34'± NORTH OF THE CENTERLINE OF BEAVER AVE.



- SET 3/4" x 18" IRON REBAR, 1.50#/FT
- FOUND 3/4" IRON ROD
- ⊙ FOUND 1-1/4" O.D. IRON PIPE
- ⊕ FOUND HARRISON MONUMENT
- ↗ STEEL FENCE POST
- ↖ VINYL "T" POST

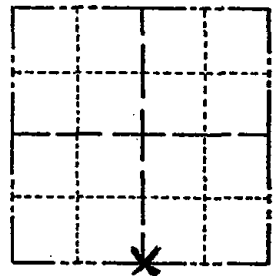
Government Land Corner Certificate

Adams County

CORNER NO. 32
 SECTION 1
 TOWN 19
 RANGE 6

TYPE OF MONUMENT: Harrison
 STATE PLANE COORDINATES: N _____
 E _____
 ELEVATION — M.S.L. DATUM: _____
 THETA ANGLE: _____
 FIELD BOOK: 83 PAGE 63
 DRAWN BY: G. Rhinehart

007 10 30
 RECORDED
 SET MARK
 4/22/80
 P.H.C.



LOCATION
(Indicated by 'X')

BASIS FOR MONUMENT LOCATION

Show info such as: History of corner, with reference to Vol. and pg., dates, surveyor; exact description of monument replaced; if location computed, by taped or EDM traverse; landowner remarks, etc. (Use reverse side if necessary)

Set corner equidistant from line between adjacent section corners. This location matches a survey to the east by Perry - Carrington, Inc.

Excavation with backhoe yielded no evidence of any previous monumentation.

SEAL:



DATA SHOWN HERE ON CERTIFIED CORRECT:

Gregory P. Rhinehart
 Registered Land Surveyor

DATE: 2-20-80

TIE SKETCH

Show at least four ties, also fence lines, roads, topo, size and type of witness trees and if off road - best way to arrive at corner.

