

12 SECTION 19 TOWN 05 RANGE

# ADAMS COUNTY

COUNTY CORNER NO: 40  
ROMPORTOL ID: 41905122000

## PUBLIC LAND SURVEY MONUMENT RECORD

TYPE OF MONUMENT: HARRISON  
ADAMS COUNTY COORDINATES, NAD 83 (2007)

N. 279605.653

E. 525535.284

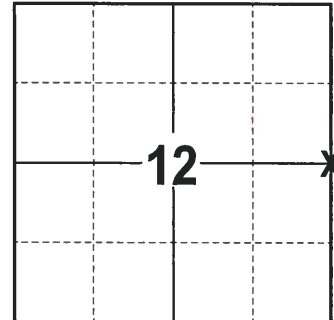
ELEVATION-      DATUM     

FIELD WORK DATE: 01/17/2018

### BASIS FOR MONUMENT LOCATION

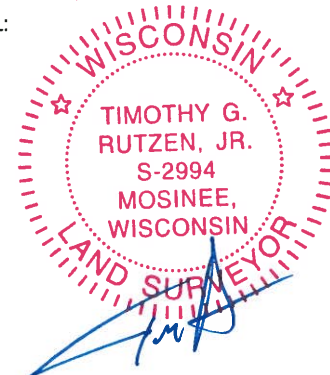
1976 - PLS 1103 RAN AN EDM/TRANSIT TRAVERSE AROUND SECTION 7 AND THE ADJACENT SECTIONS TO DETERMINE THE SEARCH AREAS FOR INVESTIGATION. EXCAVATION WITH A BACKHOE YIELDED NO EVIDENCE OF THE ORIGINAL CORNER OR ANY REMONUMENTATION. CALCULATED THE CORNER LOCATION ON A LINE BETWEEN THE ADJACENT SECTION CORNERS AND PROPORTIONAL TO THE ORIGINAL NOTES. SET A HARRISON MONUMENT AT THE CORNER LOCATION AND TIED OUT.

2018 - PLS 2994 FOUND A HARRISON MONUMENT 18" BELOW THE SURFACE AND 1 IRON PIPE OF UNKNOWN ORIGIN. FOUND NO EVIDENCE OF ANY WITNESSES. ACCEPTED THE HARRISON MONUMENT AS THE BEST EVIDENCE OF THE CORNER LOCATION. SET 3 NEW TIES AND MEASURED TO THE TIES.



**LOCATION**  
(INDICATE CORNER BY "X")

SEAL:



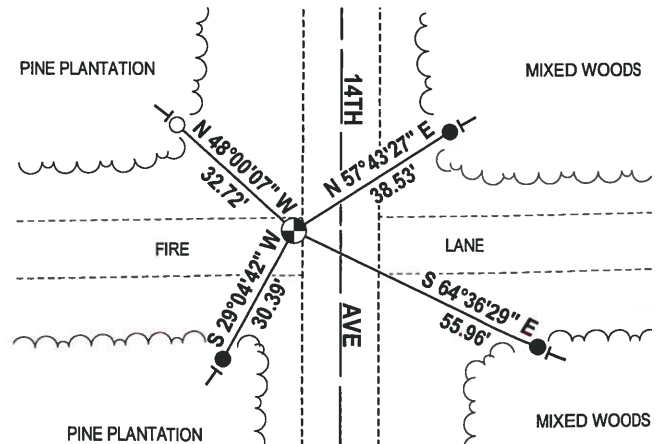
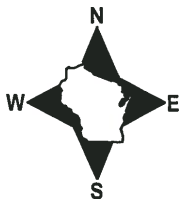
DATA SHOWN HERE ON THIS TIE SHEET IS CORRECT AND COMPLETE TO THE BEST OF MY KNOWLEDGE AND BELIEF.

PROFESSIONAL LAND SURVEYOR

DATE 3-1-18

### - TIE SKETCH

NOTE: THE CORNER FALLS 10± WEST OF THE CENTERLINE OF 14TH AVE AND 3± NORTH OF THE CENTERLINE OF THE FIRE LANE.



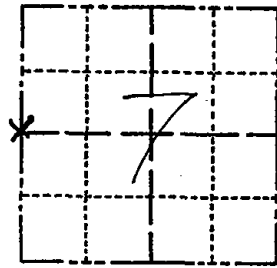
- 3/4" x 18" IRON REBAR SET, 1.50#/FT
- 4" O.D. IRON PIPE FOUND
- ⊙ HARRISON FOUND
- VINYL "T" POST

# ADAMS COUNTY

## Survey Monument Record

TYPE OF MONUMENT: Harrison  
 STATE PLANE COORDINATES: N \_\_\_\_\_  
 E \_\_\_\_\_  
 ELEVATION — M.S.L. DATUM: \_\_\_\_\_  
 THETA ANGLE: \_\_\_\_\_  
 FIELD BOOK: FILE PAGE \_\_\_\_\_

CORNER NO. 957  
 SECTION 7  
 TOWN 19  
 RANGE 6



### BASIS FOR MONUMENT LOCATION

(Use reverse side if necessary)

Show info such as: History of corner, with reference to Vol. and pg, dates, surveyor; exact description of monument replaced; if location computed, by taped or EDM traverse; landowner remarks, etc.

Ran EDM/transit traverse around Section 7 and the adjacent sections to determine the search areas for investigation.

Excavation with backhoe yielded no evidence of the original corner or any remonumentation.

Set corner on line between the adjacent section corners and proportional to the original notes.

LOCATION (Indicated by 'X')  
 SEAL:



OK 11-27-78 RN-DA  
 3-29-83 GR-SS ALL NEW TIES  
 2-1-88 OK GR-SS  
 2-GONE, 2-NEW TIES 1-6-93-JG-BS  
 OK, 2-11-98-JG

CERTIFIED CORRECT:

*Dale C Hagen*

Registered Land Surveyor  
 DATE: January 17, 1976

TIE SKETCH OK 12-30-02-JG  
 OK, 2/12/08 GPR  
 (Show at least four ties)

#### NOTE:

Ties in trees to nail in disc.

#### NOTE:

Ties in trees to nail in disc.

NOTHING AVAILABLE

