

10  
SECTION

19  
TOWN

06  
RANGE

# ADAMS COUNTY

COUNTY CORNER NO: 38

ROMPORTOL ID: 41906102000

## PUBLIC LAND SURVEY MONUMENT RECORD

TYPE OF MONUMENT: HARRISON  
ADAMS COUNTY COORDINATES, NAD 83 (2007)

N. 279645.394

E. 546597.372

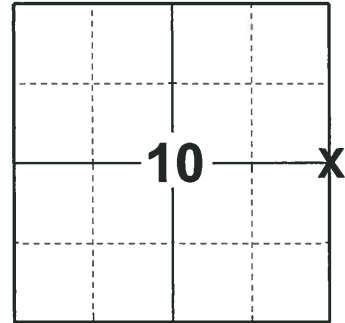
ELEVATION- \_\_\_\_\_ DATUM \_\_\_\_\_

FIELD WORK DATE: 11/29/2018

### BASIS FOR MONUMENT LOCATION

1977 - PLS 878 EXCAVATED WITH A BACKHOE AND FOUND NOTHING. RAN EDM-T-2 TRAVERSE AROUND THE ENTIRE SECTION, COMPARED ORIGINAL NOTES AND POSSESSION LINES. THIS CORNER IS NOT ON A STRAIGHT LINE NOR EQUIDISTANT BETWEEN SECTION CORNERS. THERE IS A CONSIDERABLE P.I. AT THIS POINT. SET A HARRISON MONUMENT AT THE CORNER AND TIED OUT.

2018 - PLS 2675 FOUND A HARRISON MONUMENT 4" BELOW THE ROAD SURFACE AND 1 WITNESS. THE MONUMENT AGREES WITH THE EXISTING WITNESS. ACCEPTED THE HARRISON MONUMENT AS THE CORNER LOCATION. SET 4 NEW TIES AND MEASURED TO THE TIES AND WITNESS.



LOCATION  
(INDICATE CORNER BY "X")

SEAL:



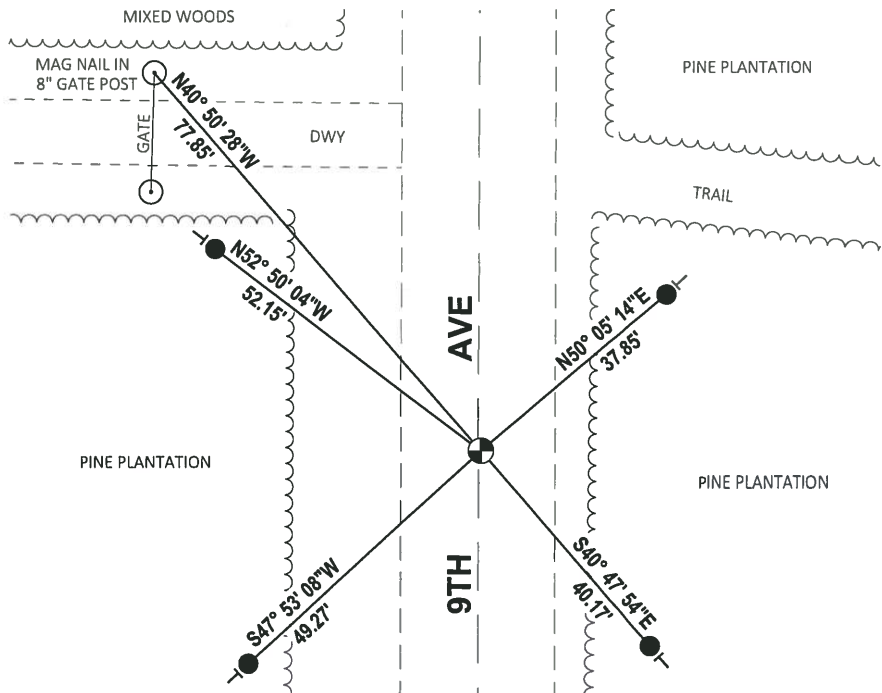
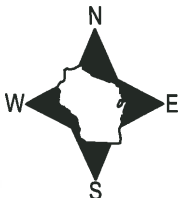
DATA SHOWN HERE ON THIS TIE SHEET IS CORRECT AND COMPLETE TO THE BEST OF MY KNOWLEDGE AND BELIEF.

PROFESSIONAL LAND SURVEYOR

DATE 1-18-19

### TIE SKETCH

NOTE: THE CORNER FALLS 0.5'± EAST OF THE CENTERLINE OF 9TH AVE.

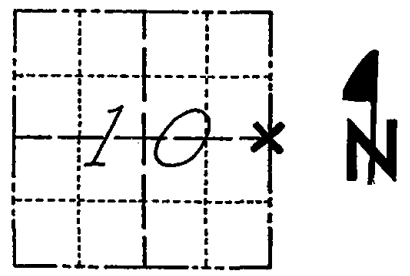


- SET 3/4" x 18" IRON REBAR, 1.50#/FT
- ⊕ FOUND HARRISON MONUMENT
- VINYL "T" POST

# Government Land Corner Certificate

ADAMS County  
 TYPE OF MONUMENT: HARRISON  
 STATE PLANE COORDINATES: N \_\_\_\_\_  
 E \_\_\_\_\_  
 ELEVATION — M.S.L. DATUM: \_\_\_\_\_  
 THETA ANGLE: \_\_\_\_\_  
 FIELD BOOK: No. 49 PAGE 47  
 DRAWN BY: \_\_\_\_\_

CORNER NO. 38  
 SECTION 10  
 TOWN 19  
 RANGE 6



LOCATION  
(Indicated by 'X')

## BASIS FOR MONUMENT LOCATION

Show info such as: History of corner, with reference to Vol. and pg., dates, surveyor; exact description of monument replaced; if location computed, by taped or EDM traverse; landowner remarks, etc. (Use reverse side if necessary)

Excavated with backhoe, found nothing.  
 Ran EDM-T-2 traverse around entire section, compared original notes, possession lines. This corner is not on a straight line nor equidistant between section corners. There is a considerable P.I. at this point.

SEAL:



DATA SHOWN HERE ON  
CERTIFIED CORRECT:

Anthony B. Kiedrowski  
Registered Land Surveyor

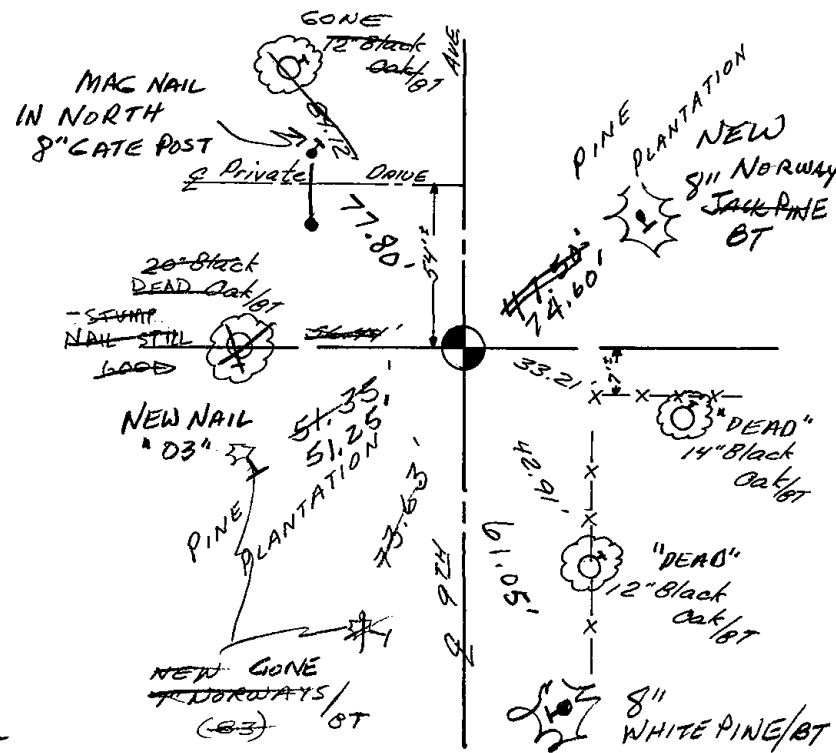
DATE: 5/26/77

OK 11-24-78 DA-SS

## TIE SKETCH

Show at least four ties, also fence lines, roads, topo, size and type of witness trees' and if off road - best way to arrive at corner.

Ties to nail and bottle cap.



## MAINTENANCE RECORD

Date	Init.	Remarks
3-10-83	GR-SS	2 NEW TIES
2-1-88	GR-SS	OK
1-5-93	SG-BS	OK
2-12-98	JG	OK
1-28-03	SG	2-GONE 4-NEW MAN. OK
11-14-07	SG-IB	1-GONE 1-NEW MAN. OK