

07
SECTION

19
TOWN

06
RANGE

ADAMS COUNTY

COUNTY CORNER NO: 42

ROMPORTOL ID: 41906070020

PUBLIC LAND SURVEY MONUMENT RECORD

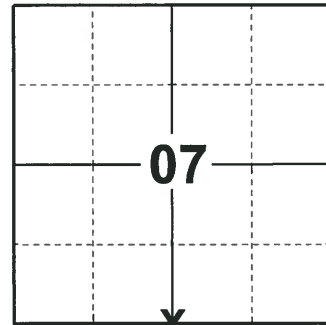
TYPE OF MONUMENT: HARRISON
ADAMS COUNTY COORDINATES, NAD 83 (2007)

N. 276970.506

E. 528209.156

ELEVATION- DATUM

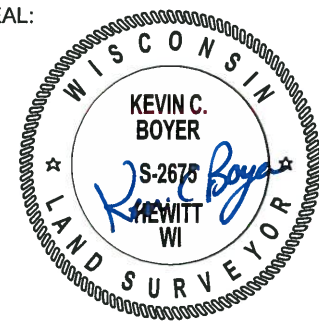
FIELD WORK DATE: 12/03/2018



LOCATION

(INDICATE CORNER BY "X")

SEAL:



DATA SHOWN HERE ON THIS TIE SHEET IS CORRECT AND COMPLETE TO THE BEST OF MY KNOWLEDGE AND BELIEF.

PROFESSIONAL LAND SURVEYOR

DATE 1-18-19

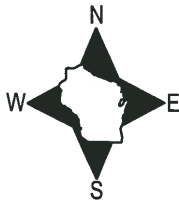
BASIS FOR MONUMENT LOCATION

1976 - PLS 1103 RAN EDM/TRANSIT TRAVERSE AROUND SECTION 7 AND THE ADJACENT SECTIONS TO DETERMINE THE SEARCH AREA FOR INVESTIGATION. EXCAVATION WITH A BACKHOE YIELDED NO EVIDENCE OF THE ORIGINAL CORNER OR ANY REMONUMENTATION. FOUND NO RECORD OF THE 1" IRON PIPE ON THE SOUTH SIDE OF BIG HORN AVENUE, BEING ON THE QUARTER LINE. CALCULATED THE CORNER LOCATION ON LINE BETWEEN THE ADJACENT SECTION CORNERS AND PROPORTIONAL TO THE ORIGINAL NOTES. SET A HARRISON MONUMENT AT THE CALCULATED LOCATION AND TIED OUT.

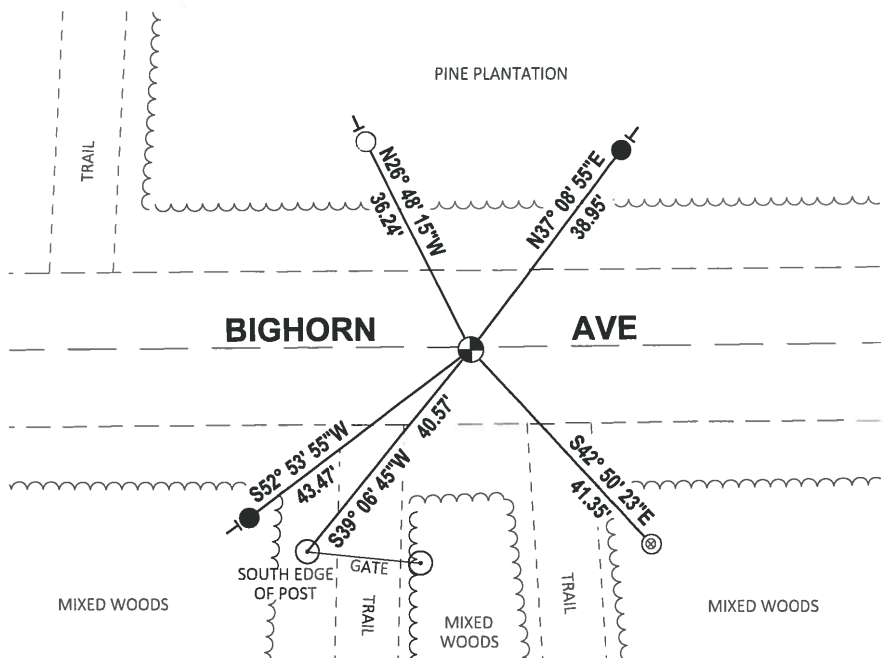
2018 - PLS 2675 FOUND A HARRISON MONUMENT 10" BELOW THE ROAD SURFACE, 2 TIES AND 1 WITNESS. THE MONUMENT AGREES WITH THE EXISTING TIES AND WITNESS. ACCEPTED THE HARRISON MONUMENT AS THE CORNER LOCATION. SET 2 NEW TIES AND MEASURED TO THE TIES AND WITNESS.

TIE SKETCH

NOTE: THE CORNER FALLS 0.5'± SOUTH OF THE CENTERLINE OF BIGHORN AVE.



- SET 3/4" x 18" IRON REBAR, 1.50#/FT
- FOUND 3/4" IRON ROD
- ⊗ FOUND 1-1/2" O.D. IRON PIPE
- ⊕ FOUND HARRISON MONUMENT
- VINYL "T" POST

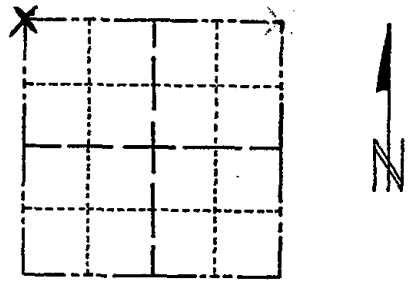


ADAMS COUNTY

Survey Monument Record

TYPE OF MONUMENT: 30" HARRISON
 STATE PLANE COORDINATES: N _____
 E _____
 ELEVATION — M.S.L. DATUM: _____
 THETA ANGLE: _____
 FIELD BOOK: 108 PAGE 97

CORNER NO. 312
 SECTION 18
 TOWN 19
 RANGE 6



LOCATION
(Indicated by 'X')

SEAL:



CERTIFIED CORRECT:

Registered Land Surveyor
 DATE: 9-18-73

Set by retracement of a Perry-Carrington survey.

OK 11-27-78 RN-DH
 3-11-83 GR-SS 2 NEW TIES
 2-1-88 OK GR-SS
 OK 1-4-93 JG-BS
 OK, 2-11-98 - JG
 OK, 12-30-02 - JG

TIE SKETCH

(Show at least four ties)

