

11  
SECTION

19  
TOWN

06  
RANGE

# ADAMS COUNTY

COUNTY CORNER NO: 51

ROMPORTOL ID: 41906110000

## PUBLIC LAND SURVEY MONUMENT RECORD

TYPE OF MONUMENT: HARRISON  
ADAMS COUNTY COORDINATES, NAD 83 (2007)

N. 277040.230

E. 551899.992

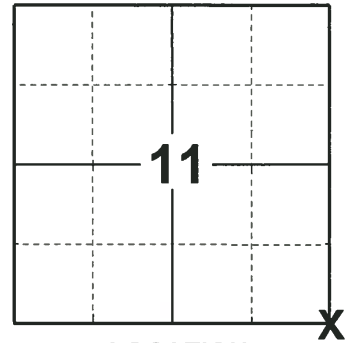
ELEVATION- \_\_\_\_\_ DATUM \_\_\_\_\_

FIELD WORK DATE: 11/28/2018

### BASIS FOR MONUMENT LOCATION

1971 - PLS 981 FOUND A 1-1/4" IRON BAR. SET A HARRISON MONUMENT AND TIED OUT.

2018 - PLS 2675 FOUND A HARRISON MONUMENT 10" BELOW THE ROAD SURFACE AND 2 TIES. THE MONUMENT AGREES WITH THE EXISTING TIES. ACCEPTED THE HARRISON MONUMENT AS THE CORNER LOCATION. SET 2 NEW TIES AND MEASURED TO THE TIES.



LOCATION

(INDICATE CORNER BY "X")

SEAL:



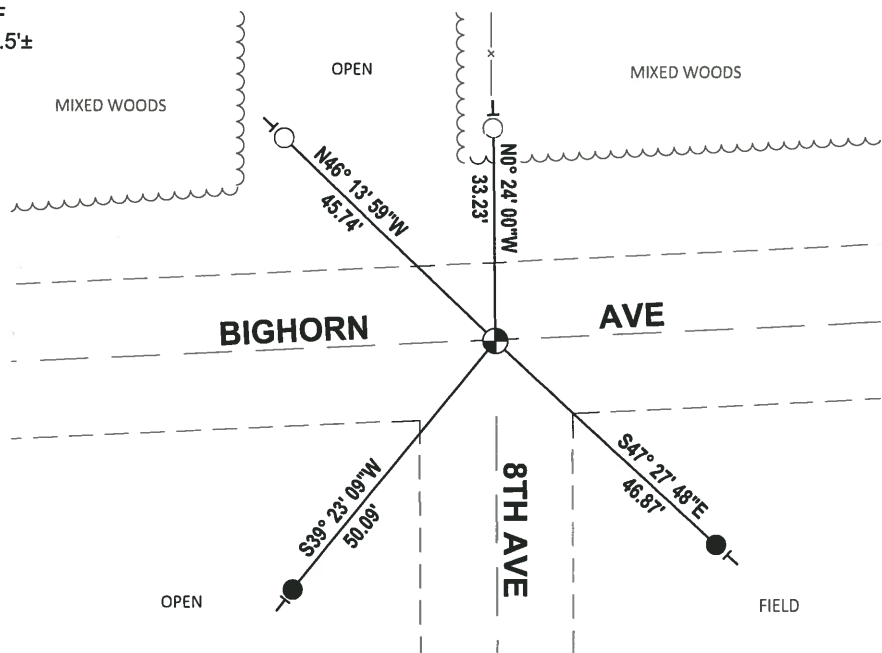
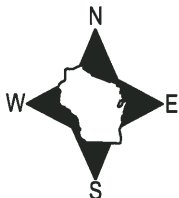
DATA SHOWN HERE ON THIS TIE SHEET IS CORRECT AND COMPLETE TO THE BEST OF MY KNOWLEDGE AND BELIEF.

PROFESSIONAL LAND SURVEYOR

DATE 1-18-19

### TIE SKETCH

NOTE: THE CORNER FALLS 0.5'± SOUTH OF THE CENTERLINE OF BIGHORN AVE AND 0.5'± WEST OF THE CENTERLINE OF 8TH AVE.



- SET 3/4" x 18" IRON REBAR, 1.50#/FT
- FOUND 3/4" IRON ROD
- ⊙ FOUND HARRISON MONUMENT
- | VINYL "T" POST

ADAMS COUNTY

Survey Monument Record

TYPE OF MONUMENT: 30" HARRISON

STATE PLANE COORDINATES: N \_\_\_\_\_

E \_\_\_\_\_

ELEVATION — M.S.L. DATUM: \_\_\_\_\_

THETA ANGLE: \_\_\_\_\_

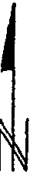
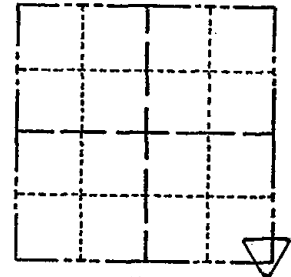
FIELD BOOK: 104 PAGE 79

CORNER NO. 48

SECTION 11

TOWN 19

RANGE 6



LOCATION (Indicated by 'X')

SEAL:

BASIS FOR MONUMENT LOCATION

(Use reverse side if necessary)

Show info such as: History of corner, with reference to Vol. and pg, dates, surveyor; exact description of monument replaced; if location computed, by taped or EDM traverse; landowner remarks, etc.

Found 1 1/4" iron bar and set monument

September 1, 1971

Sam T. Mullen R.L.S. S-981

- OK 11-24-78 DA-SS
- 3-10-83 GR-SS 1 NEW TIE
- 2-1-88 GR-SS
- 2-GONE, 3-NEW TIES, 1-5-93-JG-RS
- OK 2-13-98-JG
- 2-GONE, 2-NEW, MON. OK, 1-28-03-JG

CERTIFIED CORRECT:

Registered Land Surveyor

DATE: \_\_\_\_\_

TIE SKETCH

(Show at least four ties)

