

12 SECTION 19 TOWN 06 RANGE

ADAMS COUNTY

COUNTY CORNER NO: 52
 ROMPORTOL ID: 41906120020

PUBLIC LAND SURVEY MONUMENT RECORD

TYPE OF MONUMENT: 1-1/4" IRON ROD
 ADAMS COUNTY COORDINATES, NAD 83 (2007)

N. 277071.215

E. 554546.493

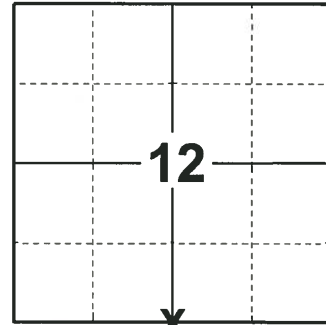
ELEVATION- _____ DATUM _____

FIELD WORK DATE: 11/29/2018

BASIS FOR MONUMENT LOCATION

1979 - PLS 878 NO RESURVEYS OF RECORD. EXCAVATED LARGE AREA WITH A BACKHOE AND FOUND NOTHING. CALCULATED THE CORNER LOCATION ON LINE AND EQUIDISTANT BETWEEN SECTION CORNERS. SET A HARRISON MONUMENT AT THE CALCULATED CORNER AND TIED OUT.

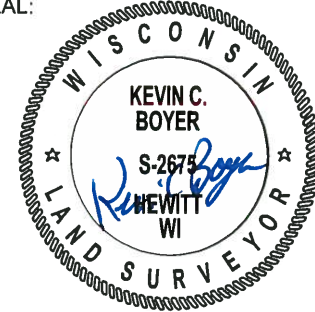
2018 - PLS 2675 FOUND A 1-1/4" IRON ROD 2" BELOW THE GROUND SURFACE AND 1 TIE. THE MONUMENT WAS VERIFIED TO BE ON A NEAR STRAIGHT LINE AND EQUIDISTANT BETWEEN THE SE AND SW CORNERS OF SECTION 12. THE MONUMENT ALSO AGREES WITH THE EXISTING TIE. ACCEPTED THE 1-1/4" IRON ROD AS THE CORNER LOCATION. SET 3 NEW TIES AND MEASURED TO THE TIES.



LOCATION

(INDICATE CORNER BY "X")

SEAL:



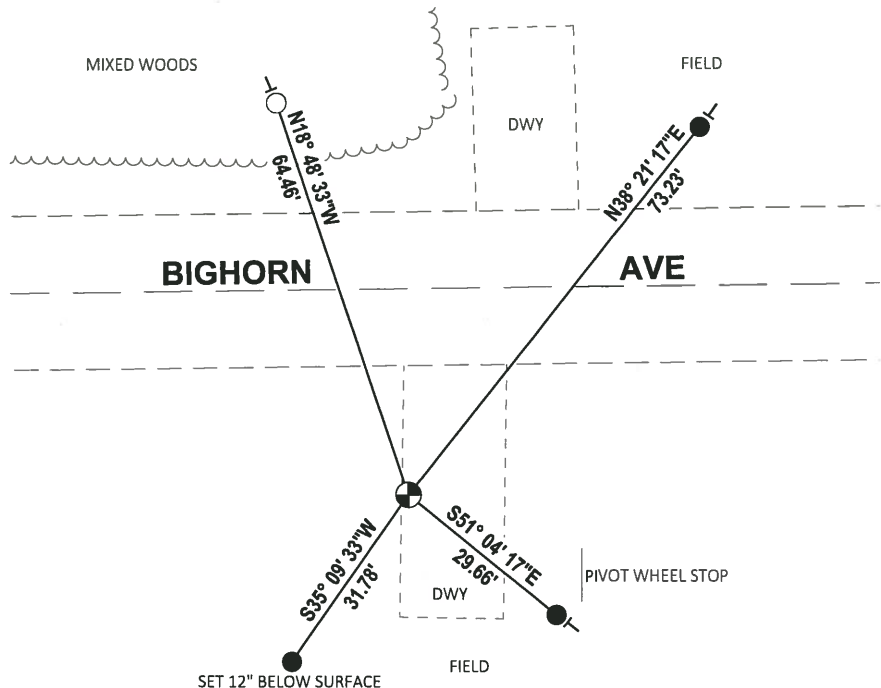
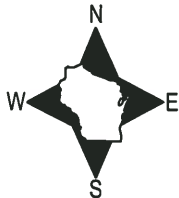
DATA SHOWN HERE ON THIS TIE SHEET IS CORRECT AND COMPLETE TO THE BEST OF MY KNOWLEDGE AND BELIEF.

PROFESSIONAL LAND SURVEYOR

DATE 1-18-19

- TIE SKETCH -

NOTE: THE CORNER FALLS 32± SOUTH OF THE CENTERLINE OF BIGHORN AVE.

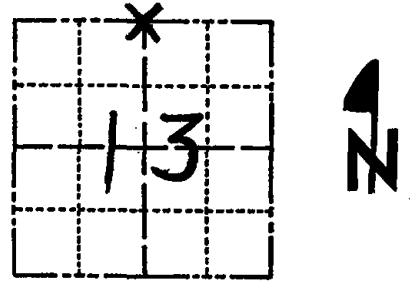


- SET 3/4" x 18" IRON REBAR, 1.50#/FT
- FOUND 3/4" IRON ROD
- ⊕ FOUND 1-1/4" IRON ROD
- VINYL "T" POST

Government Land Corner Certificate

ADAMS County
 TYPE OF MONUMENT: HARRISON
 STATE PLANE COORDINATES: N _____
 E _____
 ELEVATION — M.S.L. DATUM: _____
 THETA ANGLE: _____
 FIELD BOOK: 54 (102) PAGE 53 (4)
 DRAWN BY: B.S.

CORNER NO. 52
 SECTION 13
 TOWN 19
 RANGE 6



LOCATION
 (Indicated by 'X')

SEAL:



DATA SHOWN HERE ON
 CERTIFIED CORRECT:

Anthony B. Kiedrowski
 Registered Land Surveyor

DATE: 5/10/79

TIE SKETCH

Show at least four ties, also fence lines, roads, topo, size and type of witness trees and if off road - best way to arrive at corner.

2008 SET 3/4" RODS
 27.53 ± N 73° E
 30.42 ± S 19° W
 56.45 ± N 82° W
 64.23 ± N 10° W
 ALL BEARING TREES
 DESTROYED BY FIRE

