

18
SECTION

19
TOWN

06
RANGE

ADAMS COUNTY

COUNTY CORNER NO: 55

ROMPORTOL ID: 41906182000

PUBLIC LAND SURVEY MONUMENT RECORD

TYPE OF MONUMENT: HARRISON
ADAMS COUNTY COORDINATES, NAD 83 (2007)

N. 274339.927

E. 530818.797

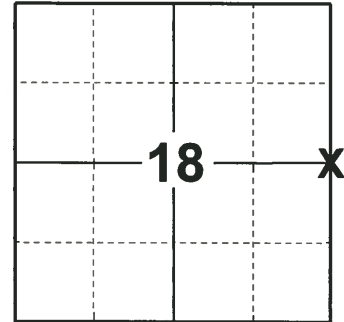
ELEVATION- _____ DATUM _____

FIELD WORK DATE: 12/05/2018

BASIS FOR MONUMENT LOCATION

1971 - PLS 981 FOUND NAIL AND SET HARRISON MONUMENT. TIED OUT CORNER.

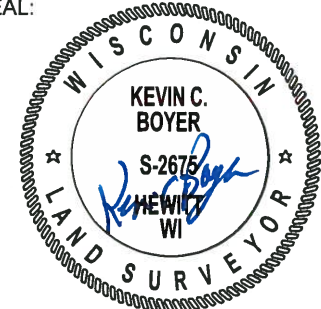
2018 - PLS 2675 FOUND HARRISON MONUMENT IN ROAD SURFACE, 1 TIE AND 1 WITNESS. THE MONUMENT AGREES WITH THE EXISTING TIE AND WITNESS. ACCEPTED THE HARRISON MONUMENT AS THE CORNER LOCATION. SET 3 NEW TIES AND MEASURED TO THE TIES AND WITNESS.



LOCATION

(INDICATE CORNER BY "X")

SEAL:



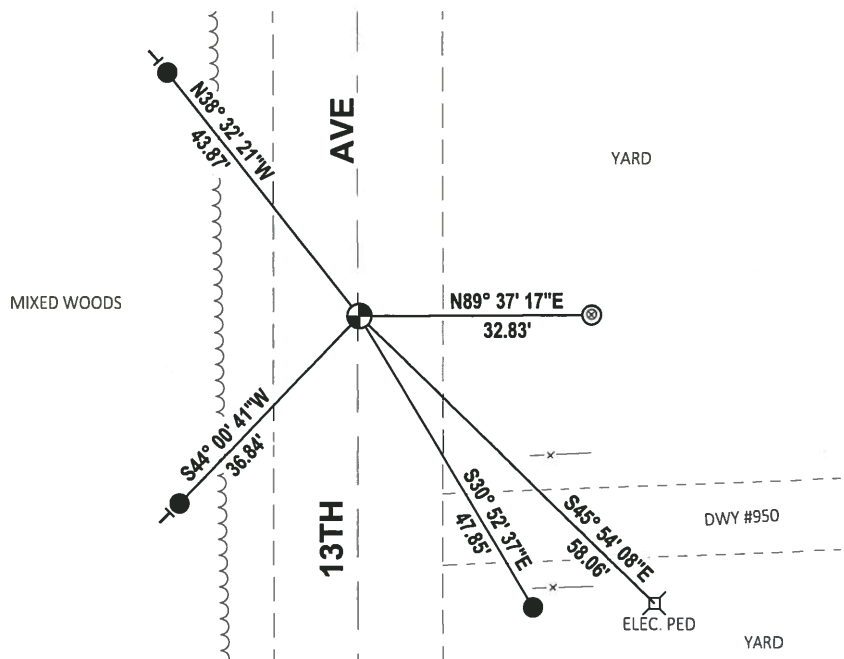
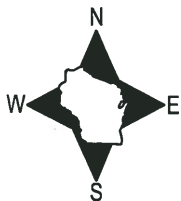
DATA SHOWN HERE ON THIS TIE SHEET IS CORRECT AND COMPLETE TO THE BEST OF MY KNOWLEDGE AND BELIEF.

PROFESSIONAL LAND SURVEYOR

DATE 1-18-19

TIE SKETCH

NOTE: THE CORNER FALLS 0.5'± EAST OF THE CENTERLINE OF 13TH AVE.



- SET 3/4" x 18" IRON REBAR, 1.50#/FT
- ⊙ FOUND 1-1/2" O.D. IRON PIPE
- ⊕ FOUND HARRISON MONUMENT
- ⊕ VINYL "T" POST

ADAMS COUNTY

Survey Monument Record

TYPE OF MONUMENT: 30" HARRISON

STATE PLANE COORDINATES: N _____

E _____

ELEVATION — M.S.L. DATUM: _____

THETA ANGLE: _____

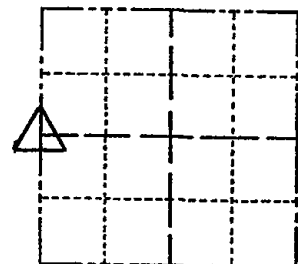
FIELD BOOK: 104 PAGE 97

CORNER NO. 68

SECTION 17

TOWN 19

RANGE 6



LOCATION
(Indicated by 'X')

SEAL: _____

BASIS FOR MONUMENT LOCATION

(Use reverse side if necessary)

Show info such as: History of corner, with reference to Vol. and pg, dates, surveyor; exact description of monument replaced; if location computed, by taped or EDM traverse; landowner remarks, etc.

Found nail and set monument

November 18, 1971

Sam T. Mullen R.L.S. S-981

OK 11-27-70 R.L.S. DA
 3-11-83 GR-SS
 1-GONE 1-4-93 JG-BB
 2-GONE, 4-NEW, MON. OK 2-11-98 -JG
 OK, 12-30-02, -JG
 OK, 12-21-07 -JG-SS

CERTIFIED CORRECT:

Registered Land Surveyor

DATE: _____

TIE SKETCH

(Show at least four ties)

