

13 SECTION 19 TOWN 05 RANGE

ADAMS COUNTY

COUNTY CORNER NO: 73

ROMPORTOL ID: 41905130000

PUBLIC LAND SURVEY MONUMENT RECORD

TYPE OF MONUMENT: HARRISON
ADAMS COUNTY COORDINATES, NAD 83 (2007)

N. 271669.113

E. 525486.346

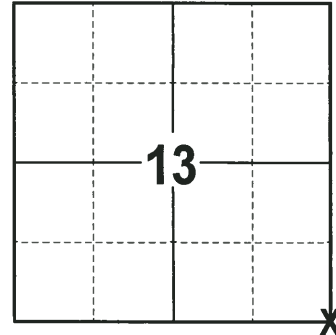
ELEVATION- DATUM

FIELD WORK DATE: 01/17/2018

BASIS FOR MONUMENT LOCATION

1973 - PLS 878 CALCULATED POSITION BY RETRACEMENT OF A PERRY-CARRINGTON SURVEY. SET A 30" HARRISON MONUMENT AT THE CALCULATED LOCATION AND TIED OUT.

2018 - PLS 2994 FOUND A HARRISON MONUMENT 6" BELOW THE ROAD SURFACE. FOUND NO EVIDENCE OF THE WITNESS TREES. ACCEPTED THE HARRISON MONUMENT AS THE BEST EVIDENCE OF THE CORNER LOCATION. SET 4 NEW TIES AND MEASURED TO THE TIES.



LOCATION
(INDICATE CORNER BY "X")

SEAL:



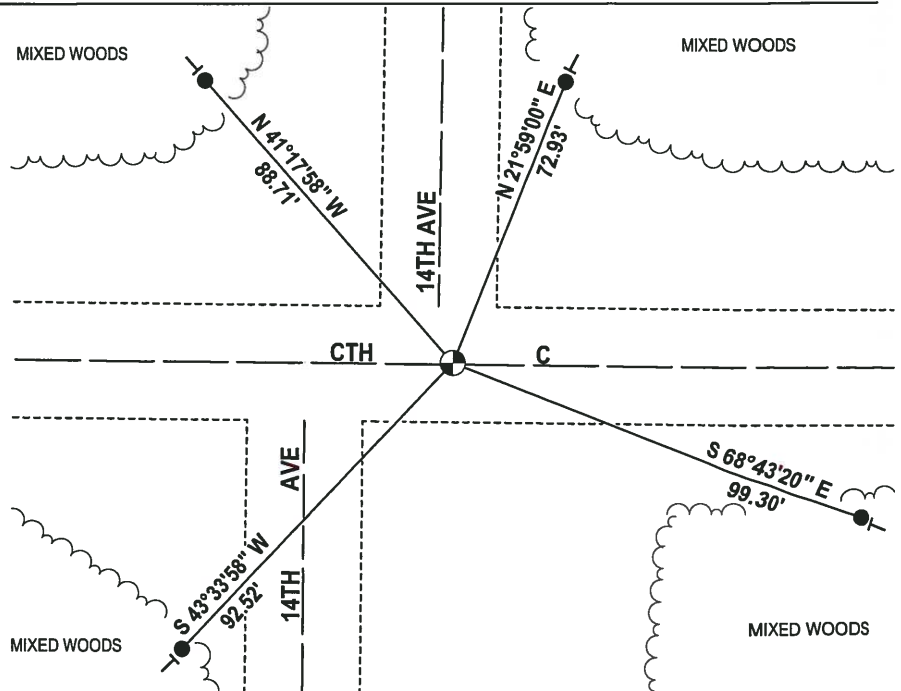
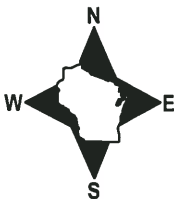
DATA SHOWN HERE ON THIS TIE SHEET IS CORRECT AND COMPLETE TO THE BEST OF MY KNOWLEDGE AND BELIEF.

PROFESSIONAL LAND SURVEYOR

DATE 3-1-18

- TIE SKETCH

NOTE: THE CORNER FALLS 3± EAST OF THE CENTERLINE OF 14TH AVE.



- 3/4" x 18" IRON REBAR SET, 1.50#/FT
- ⊙ HARRISON FOUND
- VINYL "T" POST

ADAMS COUNTY

CORNER NO. 313

Survey Monument Record

SECTION 18

TYPE OF MONUMENT: 30" HARRISON

TOWN 19

STATE PLANE COORDINATES: N _____

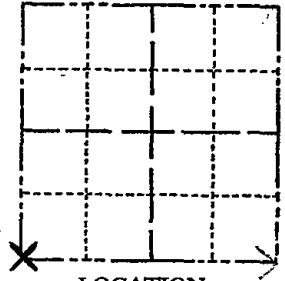
RANGE 6

E _____

ELEVATION — M.S.L. DATUM: _____

THETA ANGLE: _____

FIELD BOOK: 108 PAGE 97



BASIS FOR MONUMENT LOCATION

(Use reverse side if necessary)

Show info such as: History of corner, with reference to Vol. and pg, dates, surveyor; exact description of monument replaced; if location computed, by taped or EDM traverse; landowner remarks, etc.

SEAL:



Set by a retracement of a Perry-Carrington survey.

REMOVED MON 6/13/2000 FOR CONSS. — RESET
H/W @ JCT BOX NW QUAD AUG 2000

OK 11-27-78 RN-DA
3-11-83 GR-SS 2 NEW TIES

OK 1-4-93 JG-RS

OK 2-10-98 - JG

1-GONE, 2-NEW, MON. OK 12-12-02 - JG

CERTIFIED CORRECT:

Anthony B. Kiedrowski
Registered Land Surveyor

DATE: 9-18-73

TIE SKETCH OK. 12-21-07 - JG-SS

(Show at least four ties)

