

18
SECTION

19
TOWN

06
RANGE

ADAMS COUNTY

COUNTY CORNER NO: 62

ROMPORTOL ID: 41906180020

PUBLIC LAND SURVEY MONUMENT RECORD

TYPE OF MONUMENT: HARRISON
ADAMS COUNTY COORDINATES, NAD 83 (2007)

N. 271639.071

E. 528172.735

ELEVATION- _____ DATUM _____

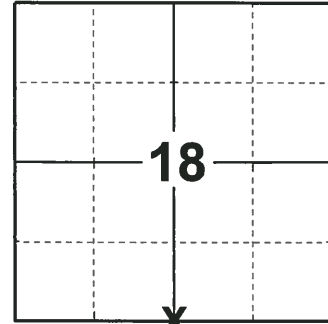
FIELD WORK DATE: 12/05/2018

BASIS FOR MONUMENT LOCATION

1976 - PLS 878 RAN EDM TRAVERSE AROUND SECTION 19 TO DETERMINE SEARCH AREAS FOR INVESTIGATION. COULD FIND NO EVIDENCE OF ANY BEARING TREES. DID NOT EXCAVATE WITH BACKHOE BECAUSE SEARCH AREA FALLS IN CUT SECTION OF ROADWAY. RE-ESTABLISHED CORNER BY PROPORTIONING DISTANCES TO THOSE MEASURED BY PERRY IN A SURVEY OF THE SOUTH LINE OF SECTION 18. THIS CORNER CAN NOT BE RE-ESTABLISHED FROM THE SUBDIVISION OF EVERGREEN ACRES BECAUSE THE SURVEYOR OF THAT PARCEL (BALLWEBER) MEASURED 1320 FEET EAST FROM THE WEST LINE OF SECTION 19. SET HARRISON MONUMENT OF 9-3-1976.

1979 - PLS 1478 FOUND EXISTING HARRISON MONUMENT DURING EDM TRAVERSE OF SECTION 18. THIS MONUMENT FALLS AT DISTANCES RECORDED BY PERRY-CARRINGTON ENGINEERING AND AT ORIGINAL DISTANCE FROM THE SE CORNER OF SECTION 18.

2018 - PLS 2675 FOUND A HARRISON MONUMENT 8" BELOW THE ROAD SURFACE AND 1 TIE. THE MONUMENT AGREES WITH THE EXISTING TIE. ACCEPTED THE HARRISON MONUMENT AS THE CORNER LOCATION. SET 4 NEW TIES AND MEASURED TO THE TIES.



LOCATION

(INDICATE CORNER BY "X")

SEAL:



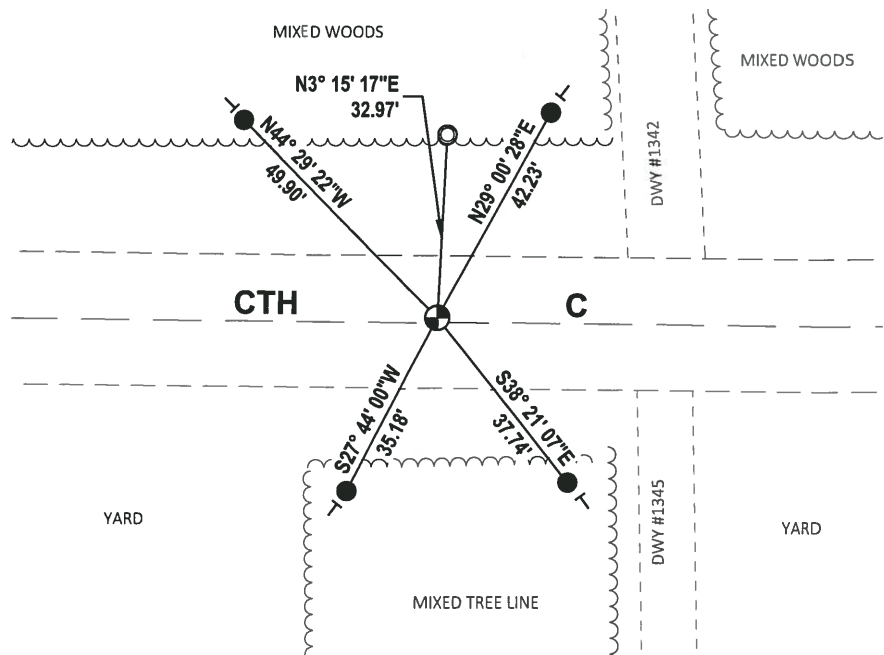
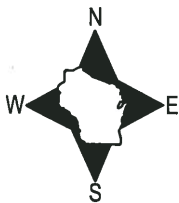
DATA SHOWN HERE ON THIS TIE SHEET IS CORRECT AND COMPLETE TO THE BEST OF MY KNOWLEDGE AND BELIEF.

PROFESSIONAL LAND SURVEYOR

DATE 1-18-19

TIE SKETCH

NOTE: THE CORNER FALLS 3.5'± NORTH OF THE CENTERLINE OF CTH C.

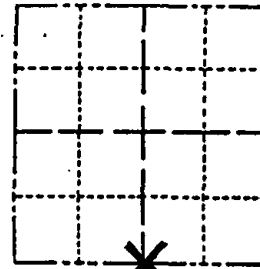


- SET 3/4" x 18" IRON REBAR, 1.50#/FT
- FOUND 1-1/4" O.D. IRON PIPE
- ⊕ FOUND HARRISON MONUMENT
- | VINYL "T" POST

Government Land Corner Certificate

ADAMS County
 TYPE OF MONUMENT: Harrison standard
 STATE PLANE COORDINATES: N _____
 E _____
 ELEVATION — M.S.L. DATUM: _____
 THETA ANGLE: _____
 FIELD BOOK: _____ PAGE _____
 DRAWN BY: _____

CORNER NO. 62
 SECTION 18
 TOWN 19
 RANGE 6



LOCATION
 (Indicated by 'X')

BASIS FOR MONUMENT LOCATION

Show info such as: History of corner, with reference to Vol. and pg., dates, surveyor; exact description of monument replaced; if location computed, by taped or EDM traverse; landowner remarks, etc. (Use reverse side if necessary)

SEAL:

This is an updated tie sheet to show ties in place after monument was reset following road construction.

SEE TIE SHEET BY G. RHINEHART, 7-26-79,
 FOR ADDITIONAL INFORMATION. AUG, 2000

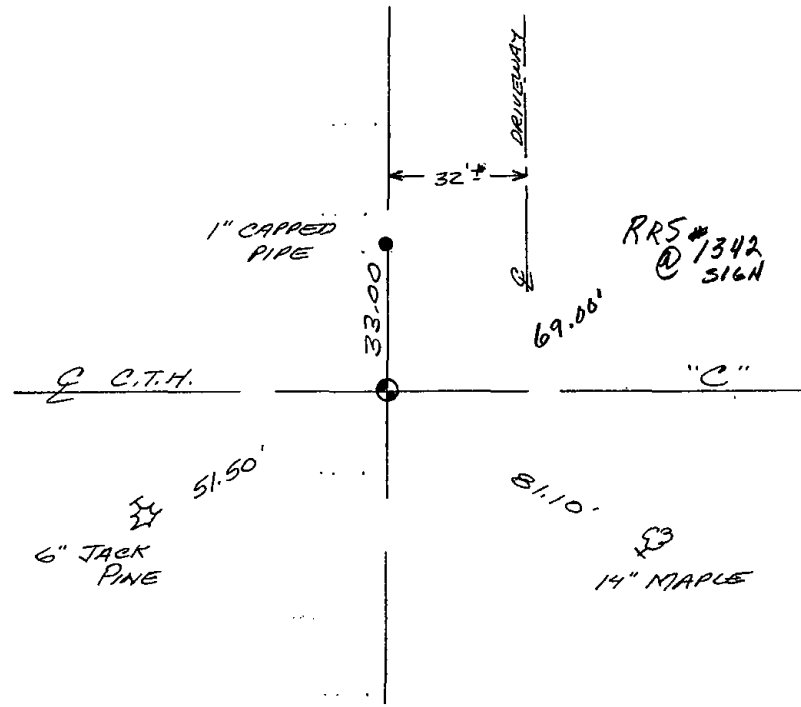
DATA SHOWN HERE ON
 CERTIFIED CORRECT:

Registered Land Surveyor

DATE: _____

TIE SKETCH

Show at least four ties, also fence lines, roads, topo, size and type of witness trees and if off road - best way to arrive at corner.



MAINTENANCE RECORD

Date	Init.	Remarks
12-30-02	JG	OK
12-21-07	JG SS	OK

Government Land Corner Certificate

ADAMS County

TYPE OF MONUMENT: **HARRISON**

STATE PLANE COORDINATES: N _____
E _____

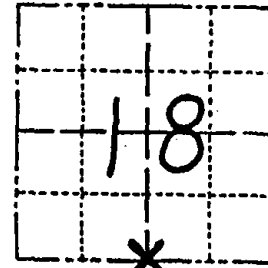
ELEVATION — M.S.L. DATUM: _____

THETA ANGLE: _____

FIELD BOOK: 54 PAGE 61

DRAWN BY: B. SULLIVAN

CORNER NO. 62
SECTION 18
TOWN 19
RANGE 6



LOCATION
(Indicated by 'X')



BASIS FOR MONUMENT LOCATION

Show info such as: History of corner, with reference to Vol. and pg., dates, surveyor; exact description of monument replaced; if location computed, by taped or EDM traverse; landowner remarks, etc. (Use reverse side if necessary)

Found existing Harrison Monument during T2/EDM traverse of Section 18. This monument falls at distances recorded by Perry-Carrington Engineering and at original distance from the SE corner of Section 18.

See attached sketch

Removed Mon for
CONST. MON @ 1342 ST
SIGN POST

OK 1-4-93 BS-JG
3-GONE, 3-NEW, 2-24-98 JG-SS

SEAL:



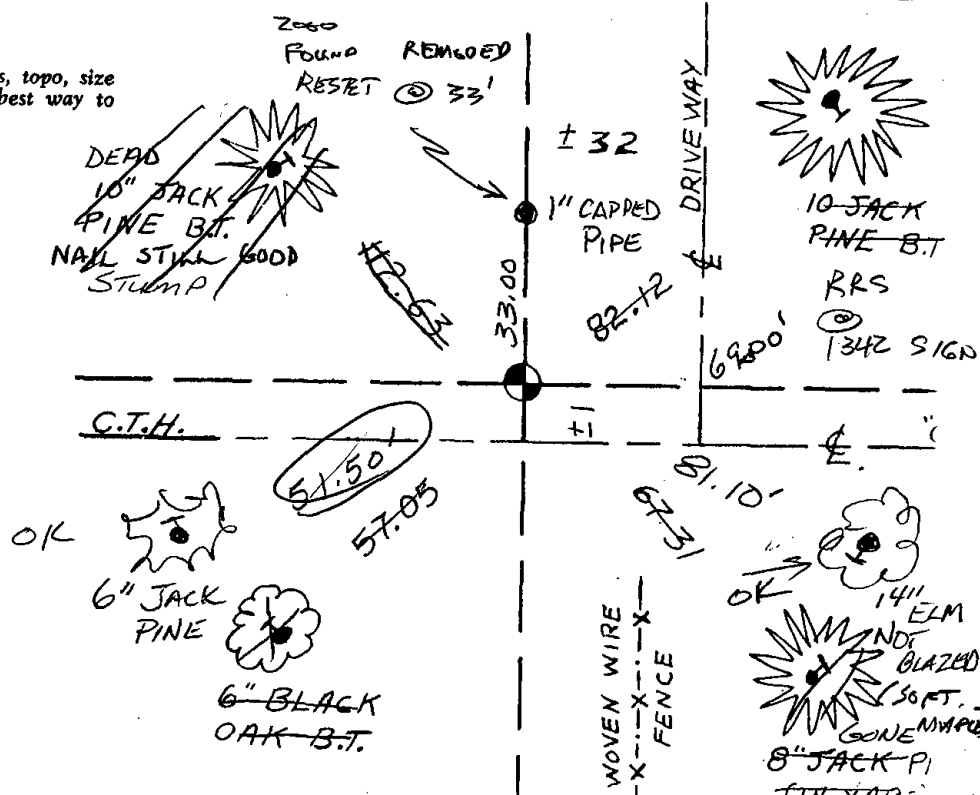
DATA SHOWN HERE ON
CERTIFIED CORRECT:

Gregory P. Rhinehart
Registered Land Surveyor

DATE: 7/26/79

TIE SKETCH

Show at least four ties, also fence lines, roads, topo, size and type of witness trees and if off road - best way to arrive at corner.



ADAMS COUNTY

Survey Monument Record

TYPE OF MONUMENT: Standard Harrison

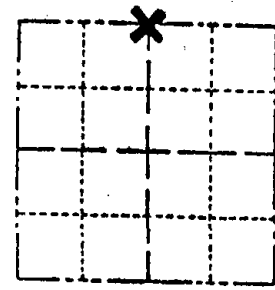
STATE PLANE COORDINATES: N _____
E _____

ELEVATION — M.S.L. DATUM: _____

THETA ANGLE: _____

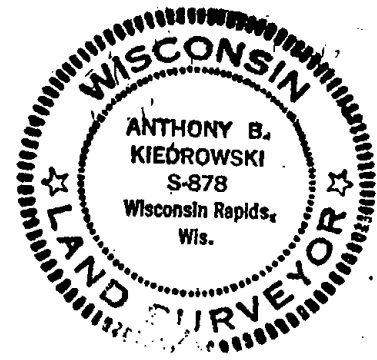
FIELD BOOK: 37 PAGE 64

CORNER NO. 62
SECTION 19
TOWN 19
RANGE 6



LOCATION
(Indicated by 'X')

SEAL:



BASIS FOR MONUMENT LOCATION

(Use reverse side if necessary)

Show info such as: History of corner, with reference to Vol. and pg. dates, surveyor; exact description of monument replaced; if location computed, by taped or EDM traverse; landowner remarks, etc.

Ran EDM/T2 traverse around Section 19 to determine search areas for investigation.

Could find no evidence of any bearing trees. Did not excavate with backhoe because search area falls in cut section of roadway.

Re-established corner by proportioning distances to those measured by Perry in a survey of the South line of Section 18.

This corner can not be re-established from the subdivision of Evergreen Acres because the surveyor of that parcel (Balweber) measured 1320 feet East from the West line of Section 19.

Set Harrison monument of 9-3-76.

OK 3-11-83 GR-SS

CERTIFIED CORRECT:

Anthony B. Kiedrowski
Registered Land Surveyor
DATE: 12-2-76

TIE SKETCH

(Show at least four ties)

NOTE

Ties in trees to nail in disc.

