

18 SECTION 19 TOWN 06 RANGE

ADAMS COUNTY

COUNTY CORNER NO: 63
ROMPORTOL ID: 41906180000

PUBLIC LAND SURVEY MONUMENT RECORD

TYPE OF MONUMENT: HARRISON
ADAMS COUNTY COORDINATES, NAD 83 (2007)

N. 271688.319

E. 530811.369

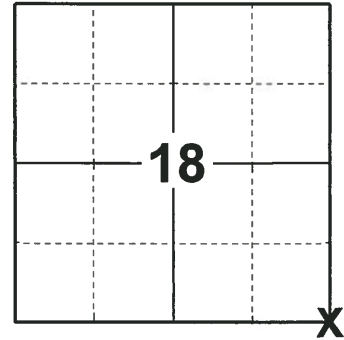
ELEVATION- _____ DATUM _____

FIELD WORK DATE: 12/05/2018

BASIS FOR MONUMENT LOCATION

1971 - PLS 981 FOUND NAIL AND SET HARRISON MONUMENT. TIED OUT CORNER.

2018 - PLS 2675 FOUND HARRISON 6" BELOW THE ROAD SURFACE AND FOUND NO EVIDENCE OF ANY OF THE TIES OR WITNESSES. ACCEPTED HARRISON MONUMENT AS THE BEST EVIDENCE OF THE CORNER LOCATION. SET 4 NEW TIES AND MEASURED TO THE TIES.



LOCATION
(INDICATE CORNER BY "X")

SEAL:



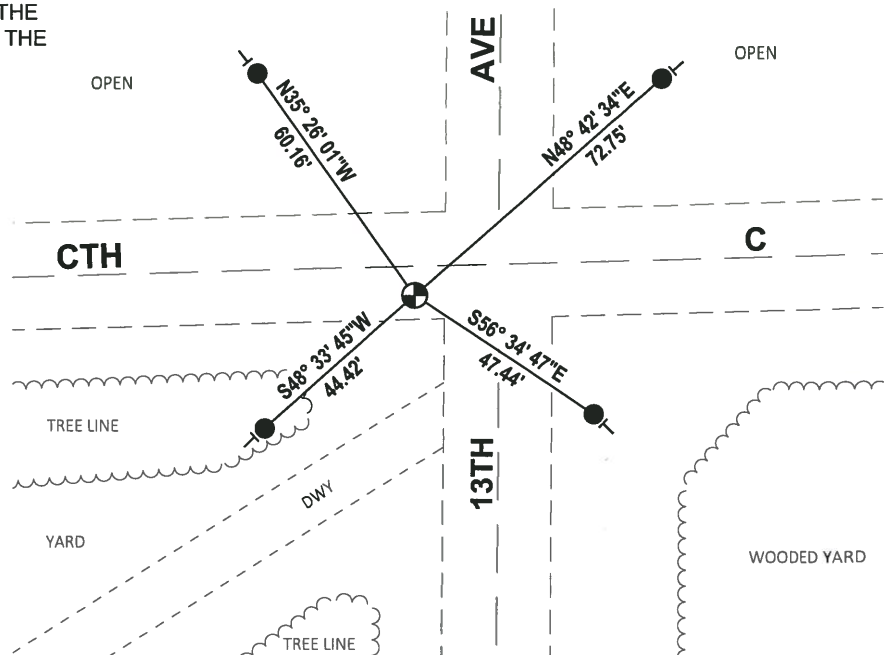
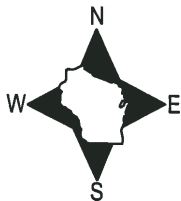
DATA SHOWN HERE ON THIS TIE SHEET IS CORRECT AND COMPLETE TO THE BEST OF MY KNOWLEDGE AND BELIEF.

PROFESSIONAL LAND SURVEYOR

DATE 1-18-19

TIE SKETCH

NOTE: THE CORNER FALLS 6"± SOUTH OF THE CENTERLINE OF CTH C AND 19"± WEST OF THE CENTERLINE OF 13TH AVE.

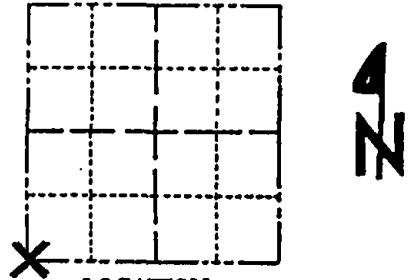


- SET 3/4" x 18" IRON REBAR, 1.50#/FT
- ⊙ FOUND HARRISON MONUMENT
- VINYL "T" POST

Government Land Corner Certificate

ADAMS County
 TYPE OF MONUMENT: Harrison standard
 STATE PLANE COORDINATES: N _____
 E _____
 ELEVATION — M.S.L. DATUM: _____
 THETA ANGLE: _____
 FIELD BOOK: _____ PAGE _____
 DRAWN BY: _____

CORNER NO. 63
 SECTION 17
 TOWN 19
 RANGE 6



LOCATION
 (Indicated by 'X')

BASIS FOR MONUMENT LOCATION

Show info such as: History of corner, with reference to Vol. and pg., dates, surveyor; exact description of monument replaced; if location computed, by taped or EDM traverse; landowner remarks, etc. (Use reverse side if necessary)

SEAL:

This is an updated tie sheet to show ties in place after monument was reset following road construction.

SEE TIE SHEET BY S.T. MULLER, 11-18-71,
 FOR ADDITIONAL INFORMATION. AUG, 2000

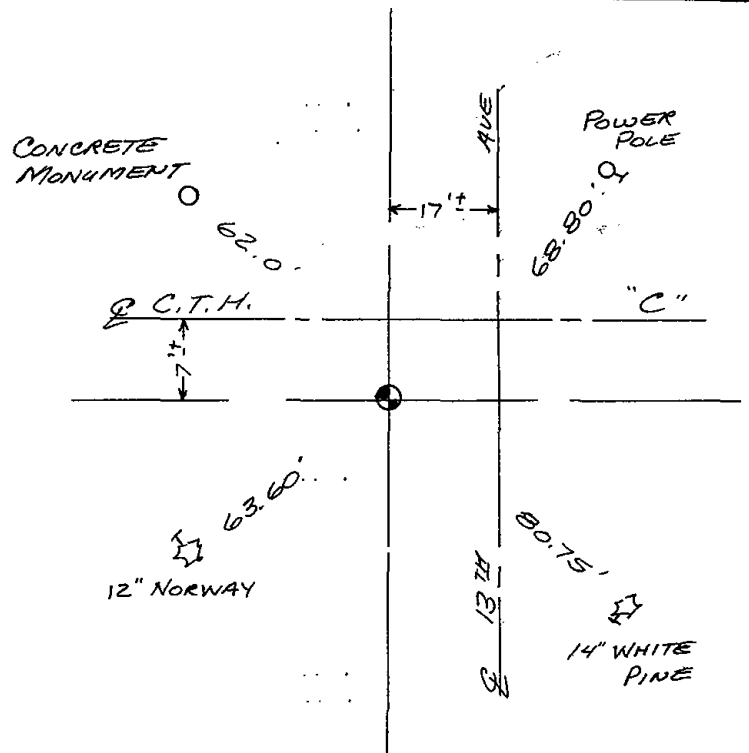
DATA SHOWN HERE ON
 CERTIFIED CORRECT:

Registered Land Surveyor

DATE: _____

TIE SKETCH

Show at least four ties, also fence lines, roads, topo, size and type of witness trees and if off road - best way to arrive at corner.



MAINTENANCE RECORD

Date	Init.	Remarks
12-30-02	JG	OK
12-21-07	JG-SS	OK

ADAMS COUNTY

Survey Monument Record

TYPE OF MONUMENT: 30" HARRISON

STATE PLANE COORDINATES: N _____

E _____

ELEVATION — M.S.L. DATUM: _____

THETA ANGLE: _____

FIELD BOOK: 104 PAGE 96

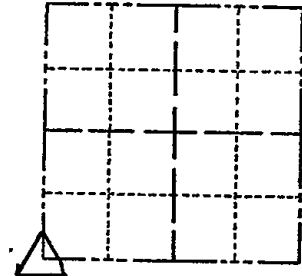
CORNER NO. 67

SECTION 17

TOWN 19

RANGE 6

63



LOCATION (Indicated by 'X')

SEAL:

BASIS FOR MONUMENT LOCATION

(Use reverse side if necessary)

Show info such as: History of corner, with reference to Vol. and pg, dates, surveyor; exact description of monument replaced; if location computed, by taped or EDM traverse; landowner remarks, etc.

Found nail and set monument

November 18, 1971

Sam T. Mullen R.L.S. S-981

OK 11-27-78 R.O.-DA
3-11-83 GR-SS OK
1-GONE 1-4-93 JG-BS
3-GONE, 3-NEW, MON. OK, 2-11-98-JG
1-GONE, 4-LEFT, 12-30-02, -JG

CERTIFIED CORRECT:

Registered Land Surveyor

DATE: _____

TIE SKETCH

(Show at least four ties)

