

17
SECTION

19
TOWN

06
RANGE

ADAMS COUNTY

COUNTY CORNER NO: 65

ROMPORTOL ID: 41906170000

PUBLIC LAND SURVEY MONUMENT RECORD

TYPE OF MONUMENT: HARRISON
ADAMS COUNTY COORDINATES, NAD 83 (2007)

N. 271767.884

E. 536063.928

ELEVATION- _____ DATUM _____

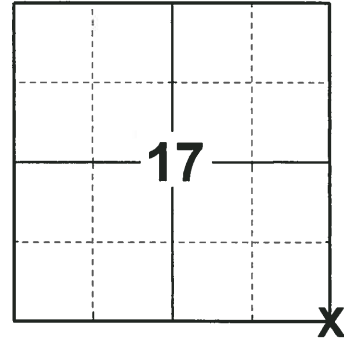
FIELD WORK DATE: 12/05/2018

BASIS FOR MONUMENT LOCATION

1971 - PLS 981 SET HARRISON MONUMENT AND TIED OUT CORNER.

2000 - PLS 2281 RESET HARRISON MONUMENT AFTER COMPLETION OF COUNTY HIGHWAY 'C' RECONSTRUCTION PROJECT. LOCATION IS BASED ON THE EXISTING MONUMENT FOUND BEFORE CONSTRUCTION BEGAN.

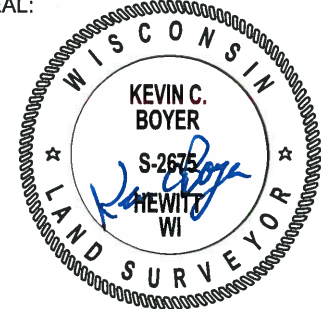
2018 - PLS 2675 FOUND A MAG NAIL IN THE ROAD SURFACE, 4 TIES AND 2 PROPERTY IRONS. REMOVED THE MAG NAIL AND FOUND A HARRISON MONUMENT 4" BELOW THE ROAD SURFACE. THE MONUMENT AGREES WITH THE EXISTING TIES. ACCEPTED THE HARRISON MONUMENT AS THE CORNER LOCATION. MEASURED TO THE TIES AND PROPERTY IRONS.



LOCATION

(INDICATE CORNER BY "X")

SEAL:



DATA SHOWN HERE ON THIS TIE SHEET IS CORRECT AND COMPLETE TO THE BEST OF MY KNOWLEDGE AND BELIEF.

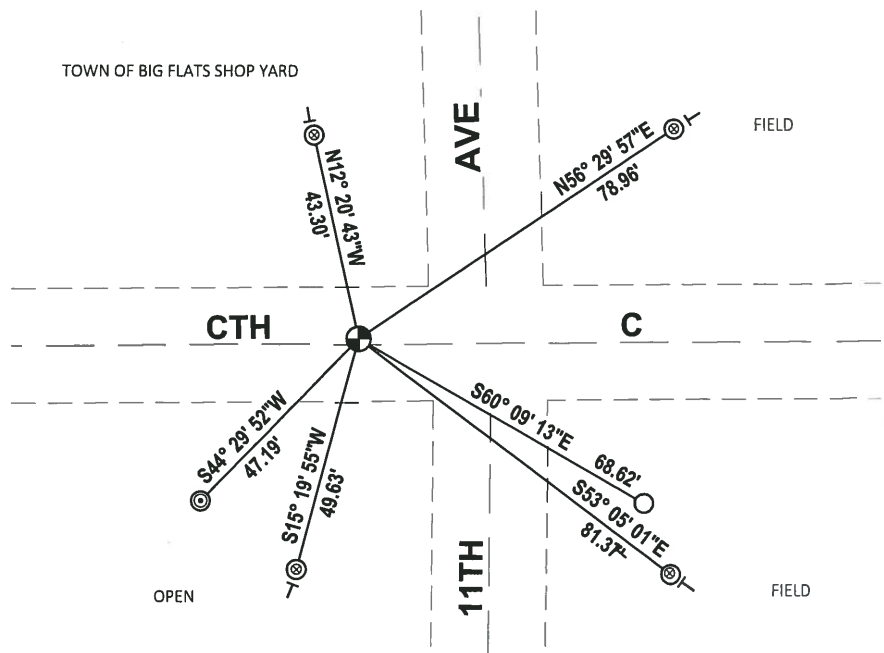
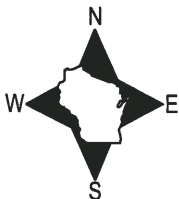
PROFESSIONAL LAND SURVEYOR

DATE 1-18-19

TIE SKETCH

NOTE: THE CORNER FALLS 1± NORTH OF THE CENTERLINE OF CTH C AND 27± WEST OF THE CENTERLINE OF 11TH AVE.

TOWN OF BIG FLATS SHOP YARD



- FOUND 3/4" IRON ROD
- ⊙ FOUND 1-1/2" O.D. IRON PIPE
- ⊙ FOUND 2-3/8" O.D. IRON PIPE
- ⊕ FOUND HARRISON MONUMENT
- | VINYL "T" POST

ADAMS COUNTY U.S. PUBLIC LAND SURVEY

MONUMENT LOCATION RECORD

LANDMARK BENCHMARK:
 CORNER IDENTITY: SOUTH EAST QUATER CONER

STATE PLANE COORDINATE: N: _____
 E: _____

ZONE: _____

ELEVATION: _____

DATUM: _____

THETA ANGLE: _____

WEATHER: SUNNY/COLD TEMPERATURE: 58° F

DATE OF SURVEY: 11/4/99

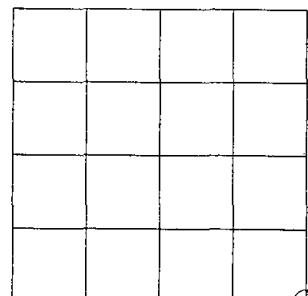
SURVEY PARTY: MARK HINTZ / CHRIS THORSON

- FOUND
- SET
- RE-SET
- RE-TIED



CORNER # (65)
 SECTION 17
 TOWNSHIP 19 NORTH
 RANGE 6 EAST

SECTION 17



LOCATION

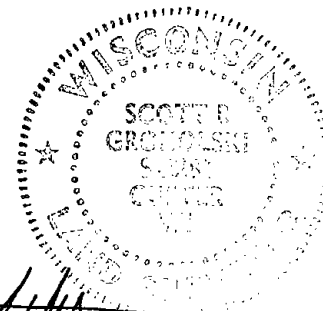
BASIS FOR MONUMENT LOCATION:

(DESCRIBE METHOD OF SURVEY AND CORNER AUTHENTICATION)

HARRISON MONUMENT RESET AFTER COMPLETION OF COUNTY HIGHWAY C RECONSTRUCTION PROJECT. LOCATION IS BASED ON THE EXISTING MONUMENT FOUND BEFORE CONSTRUCTION BEGAN.

*SEE ATTACHED TIE SHEET
 SAM MULLEN 1971*

SEAL



SCOTT GROHOLSKI (RLS #2281)

DATE 1/21/00

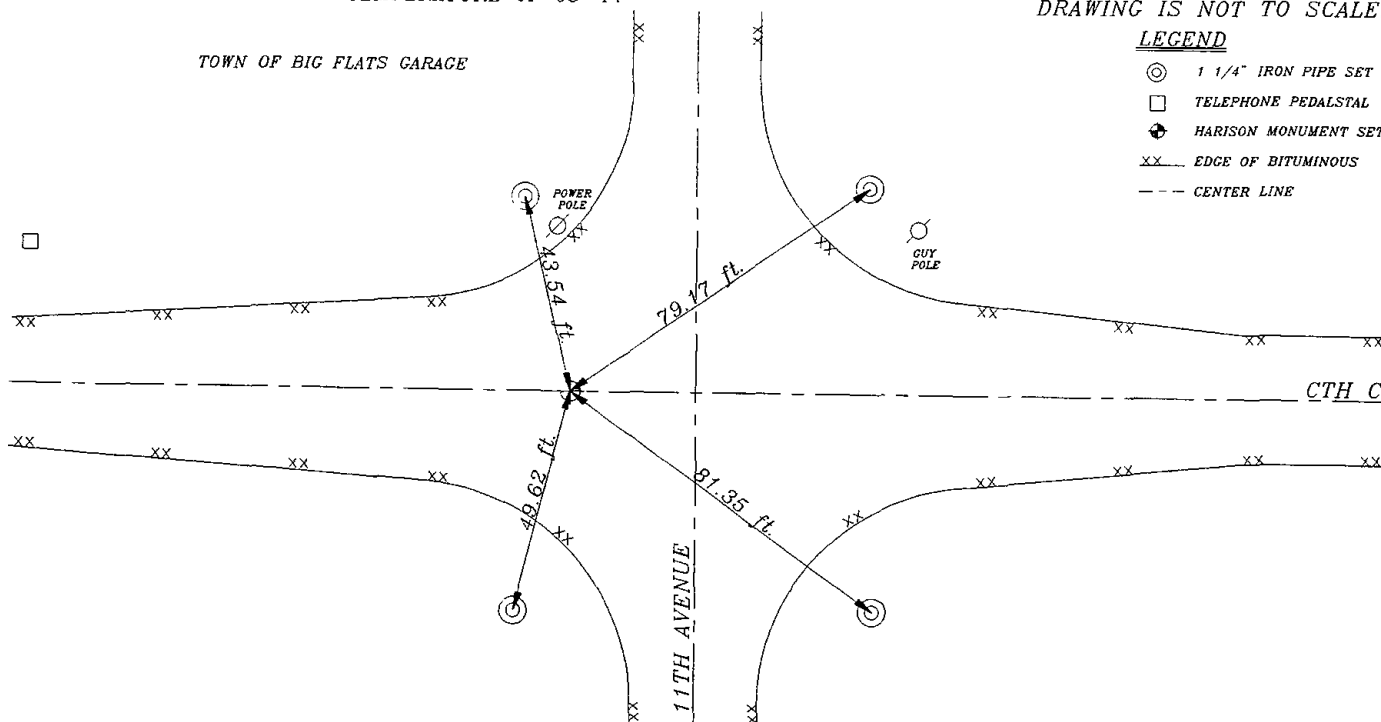
TIE SKETCH:

SHOW MINIMUM OF FOUR (4) HORIZONTAL TIE DISTANCES TO FIXED WITNESS MONUMENTS. DESCRIBE ALL MONUMENTS FOUND OR SET. CORRECT ALL DISTANCES SHOWN TO STANDARD TEMPERATURE OF 68° F.

DRAWING IS NOT TO SCALE.

LEGEND

- 1 1/4" IRON PIPE SET
- TELEPHONE PEDALSTAL
- HARRISON MONUMENT SET
- EDGE OF BITUMINOUS
- CENTER LINE



ADAMS COUNTY

CORNER NO. 71

Survey Monument Record

SECTION 21

TYPE OF MONUMENT: 30" HARRISON

TOWN 19

STATE PLANE COORDINATES: N _____

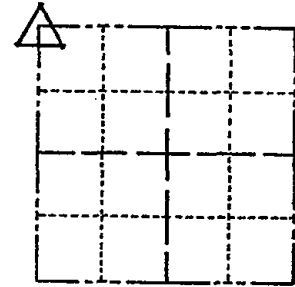
RANGE 6

E _____

ELEVATION — M.S.L. DATUM: _____

THETA ANGLE: _____

FIELD BOOK: 104 PAGE 100



LOCATION (Indicated by 'X')

SEAL:

BASIS FOR MONUMENT LOCATION

(Use reverse side if necessary)

Show info such as: History of corner, with reference to Vol. and pg, dates, surveyor; exact description of monument replaced; if location computed, by taped or EDM traverse; landowner remarks, etc.

Set monument

November 19, 1971

Sam T. Mullen R.L.S. S-981

OK 11-24-78 DA-SS
3-11-83 GR-SS 1 NEW
OK - 10/5/92-JG
3-GONE, 3-NEW, 2/24/98 JG-SS
SEE ATTACHED SHEET, GROHOLSKI, 1/21/00
OK, 1-6-03-JG

CERTIFIED CORRECT:

Registered Land Surveyor

DATE: _____

TIE SKETCH

(Show at least four ties)

