

16 SECTION 19 TOWN 06 RANGE

# ADAMS COUNTY

COUNTY CORNER NO: 66  
ROMPORTOL ID: 41906160020

## PUBLIC LAND SURVEY MONUMENT RECORD

TYPE OF MONUMENT: HARRISON  
ADAMS COUNTY COORDINATES, NAD 83 (2007)

N. 271761.565

E. 538716.014

ELEVATION- \_\_\_\_\_ DATUM \_\_\_\_\_

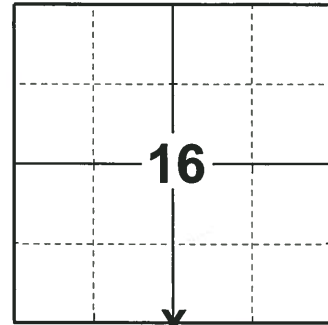
FIELD WORK DATE: 12/05/2018

### BASIS FOR MONUMENT LOCATION

1971 - PLS 981 SET HARRISON MONUMENT AND TIED OUT CORNER.

2000 - PLS 2281 RESET HARRISON MONUMENT AFTER COMPLETION OF COUNTY HIGHWAY 'C' RECONSTRUCTION PROJECT. LOCATION IS BASED ON THE EXISTING MONUMENT FOUND BEFORE CONSTRUCTION BEGAN.

2018 - PLS 2675 FOUND A MAG NAIL IN ROAD SURFACE AND 4 TIES. REMOVED THE MAG NAIL AND FOUND A HARRISON MONUMENT 4" BELOW ROAD SURFACE. THE MONUMENT AGREES WITH THE EXISTING TIES. ACCEPTED THE HARRISON MONUMENT AS THE CORNER LOCATION AND RE-MEASURED TO THE EXISTING TIES.



LOCATION

(INDICATE CORNER BY "X")

SEAL:



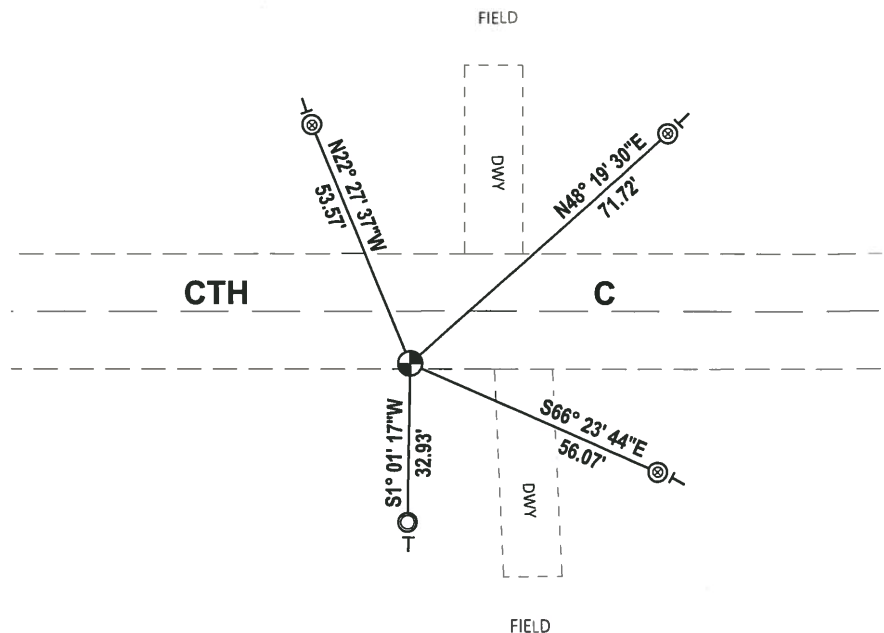
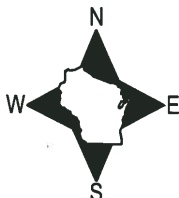
DATA SHOWN HERE ON THIS TIE SHEET IS CORRECT AND COMPLETE TO THE BEST OF MY KNOWLEDGE AND BELIEF.

PROFESSIONAL LAND SURVEYOR

DATE 1-18-19

### - TIE SKETCH -

NOTE: THE CORNER FALLS 11± SOUTH OF THE CENTERLINE OF CTH C.



- ⊙ FOUND 1-1/2" O.D. IRON PIPE
- FOUND 1-1/4" O.D. IRON PIPE
- ⊕ FOUND HARRISON MONUMENT
- VINYL "T" POST

# ADAMS COUNTY U.S. PUBLIC LAND SURVEY

## MONUMENT LOCATION RECORD

LANDMARK       BENCHMARK: \_\_\_\_\_

CORNER IDENTITY: \_\_\_\_\_ SOUTH QUATER CONER

STATE PLANE COORDINATE: N: \_\_\_\_\_

E: \_\_\_\_\_

ZONE: \_\_\_\_\_

ELEVATION: \_\_\_\_\_

DATUM: \_\_\_\_\_

THETA ANGLE: \_\_\_\_\_

WEATHER: SUNNY/COLD TEMPERATURE: 58° F

DATE OF SURVEY: 11/4/99

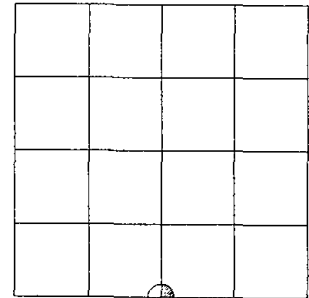
SURVEY PARTY: MARK HINTZ / CHRIS THORSON

- FOUND
- SET
- RE-SET
- RE-TIED



CORNER # 64  
 SECTION 16  
 TOWNSHIP 19 NORTH  
 RANGE 6 EAST

SECTION 16



LOCATION

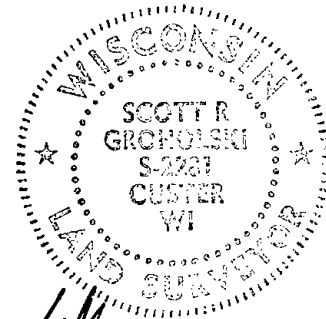
### BASIS FOR MONUMENT LOCATION:

(DESCRIBE METHOD OF SURVEY AND CORNER AUTHENTICATION)

HARRISON MONUMENT RESET AFTER COMPLETION OF COUNTY HIGHWAY C RECONSTRUCTION PROJECT. LOCATION IS BASED ON THE EXISTING MONUMENT FOUND BEFORE CONSTRUCTION BEGAN.

**SEE ATTACHED TIE SHEET**  
**SAM MULLEN 11-23-71**

SEAL



SCOTT GROHOLSKI (RLS #2281)

1/21/00

DATE

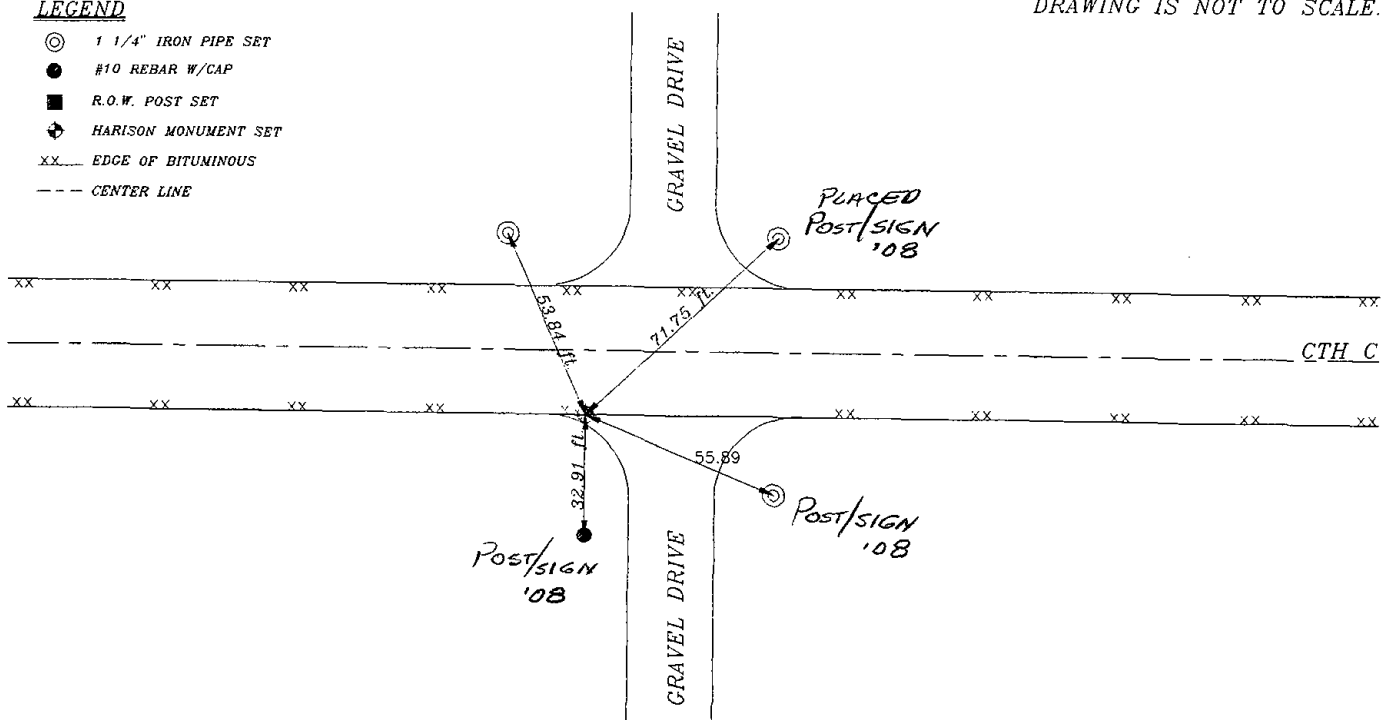
### TIE SKETCH:

SHOW MINIMUM OF FOUR (4) HORIZONTAL TIE DISTANCES TO FIXED WITNESS MONUMENTS. DESCRIBE ALL MONUMENTS FOUND OR SET. CORRECT ALL DISTANCES SHOWN TO STANDARD TEMPERATURE OF 68° F.

DRAWING IS NOT TO SCALE.

#### LEGEND

- ⊙ 1 1/4" IRON PIPE SET
- #10 REBAR W/CAP
- R.O.W. POST SET
- ⊕ HARRISON MONUMENT SET
- xx... EDGE OF BITUMINOUS
- CENTER LINE



# ADAMS COUNTY

## Survey Monument Record

TYPE OF MONUMENT: 30" HARRISON

STATE PLANE COORDINATES: N \_\_\_\_\_

E \_\_\_\_\_

ELEVATION — M.S.L. DATUM: \_\_\_\_\_

THETA ANGLE: \_\_\_\_\_

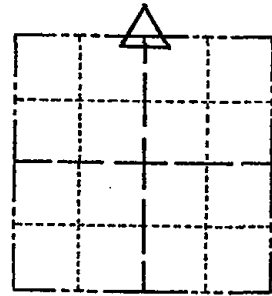
FIELD BOOK: 104 PAGE 101

CORNER NO. 72

SECTION 21

TOWN 19

RANGE 6



LOCATION  
(Indicated by 'X')

SEAL:

*SEE ATTACHED  
TIE SHEET BY  
GRONOLSKI 01-21-00*

### BASIS FOR MONUMENT LOCATION

(Use reverse side if necessary)

Show info such as: History of corner, with reference to Vol. and pg. dates, surveyor; exact description of monument replaced; if location computed, by taped or EDM traverse; landowner remarks, etc.

Set monument

November 23, 1971

SamT. Millen R.L.S. S-981

*OK 11-27-78 RU-DA*

*3-25-83 GR-SS - TREES GONE*

*OK - 10/5/92 - JG*

*3-GONE, 2-NEW, 2/24/98 JG-SS TOP BROKEN MON.*

*SEE ATTACHED SHEET GRONOLSKI, 1/21/00*

*OK, 1-6-03-JG*

CERTIFIED CORRECT:

Registered Land Surveyor

DATE: \_\_\_\_\_

### TIE SKETCH *ALL OK, 12-17-07-56.55*

(Show at least four ties)

