

14  
SECTION

19  
TOWN

06  
RANGE

# ADAMS COUNTY

COUNTY CORNER NO: 71

ROMPORTOL ID: 41906140000

## PUBLIC LAND SURVEY MONUMENT RECORD

TYPE OF MONUMENT: HARRISON  
ADAMS COUNTY COORDINATES, NAD 83 (2007)

N. 271774.865

E. 551909.947

ELEVATION-        DATUM       

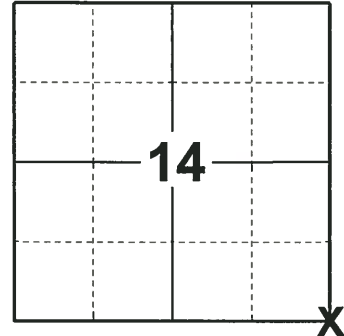
FIELD WORK DATE: 12/04/2018

### BASIS FOR MONUMENT LOCATION

1978 - PLS 878 EXCAVATED WITH BACKHOE AND FOUND THE BOTTOM 18" OF A 3" DIA. WOOD STAKE, POINTED. ACCEPTED AS THE CORNER LOCATION AFTER RUNNING AN EDM TRAVERSE OF THE SECTION. WITNESSED BY LOCAL LANDOWNER HERB PETERSON. SET A HARRISON MONUMENT AND TIED OUT.

2000 - PLS 2281 RE-SET HARRISON MONUMENT AFTER COMPLETION OF COUNTY HIGHWAY 'C' RECONSTRUCTION PROJECT. LOCATION IS BASED ON THE EXISTING MONUMENT FOUND BEFORE CONSTRUCTION BEGAN.

2018 - PLS 2675 FOUND HARRISON MONUMENT 6" BELOW THE ROAD SURFACE AND 4 TIES. THE MONUMENT AGREES WITH THE EXISTING TIES. ACCEPTED THE HARRISON MONUMENT AS THE CORNER LOCATION AND RE-MEASURED TO THE EXISTING TIES.



LOCATION

(INDICATE CORNER BY "X")

SEAL:



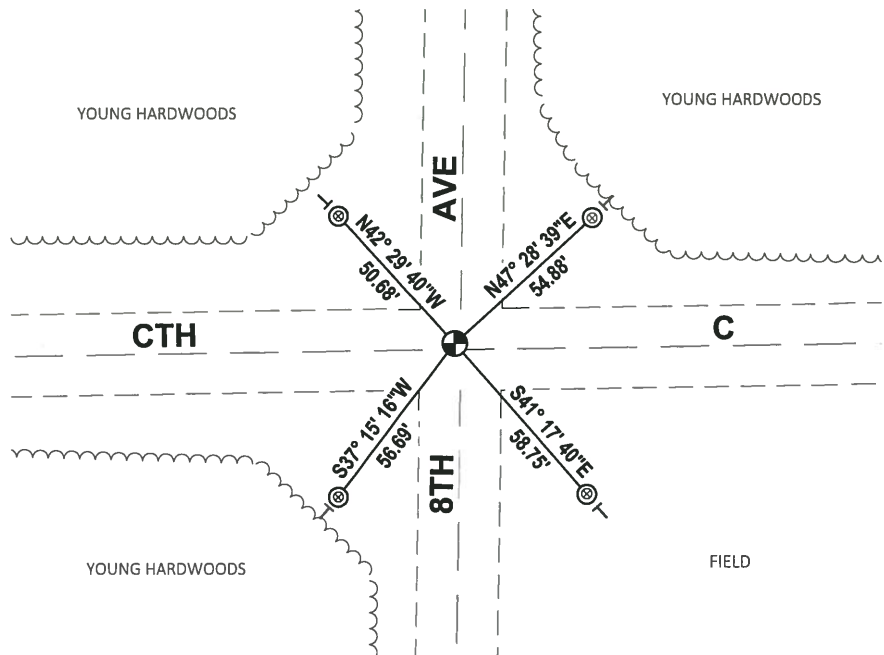
DATA SHOWN HERE ON THIS TIE SHEET IS CORRECT AND COMPLETE TO THE BEST OF MY KNOWLEDGE AND BELIEF.

PROFESSIONAL LAND SURVEYOR

DATE 1-18-19

### TIE SKETCH

NOTE: THE CORNER FALLS 2± NORTH OF THE CENTERLINE OF CTH C AND 2± WEST OF THE CENTERLINE OF 8TH AVE.



- ⊙ FOUND 1-1/2" O.D. IRON PIPE
- ⊙ FOUND HARRISON MONUMENT
- | VINYL "T" POST

# ADAMS COUNTY U.S. PUBLIC LAND SURVEY

## MONUMENT LOCATION RECORD

LANDMARK       BENCHMARK:

CORNER IDENTITY: SOUTH EAST QUATER CONER

STATE PLANE COORDINATE: N: \_\_\_\_\_

E: \_\_\_\_\_

ZONE: \_\_\_\_\_

ELEVATION: \_\_\_\_\_

DATUM: \_\_\_\_\_

THETA ANGLE: \_\_\_\_\_

WEATHER: SUNNY/COLD      TEMPERATURE: 58° F

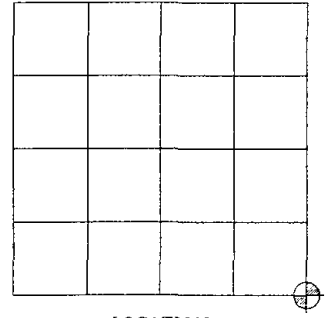
DATE OF SURVEY: 11/4/99

SURVEY PARTY: MARK HINTZ / CHRIS THORSON

- FOUND
- SET
- RE-SET
- RE-TIED



CORNER # (71)  
 SECTION 14  
 TOWNSHIP 19 NORTH  
 RANGE 6 EAST  
 SECTION 14



LOCATION

### BASIS FOR MONUMENT LOCATION:

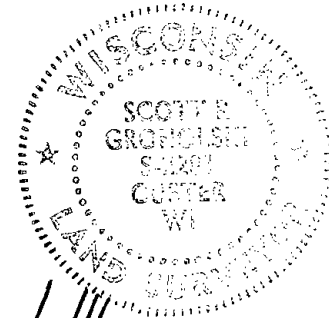
(DESCRIBE METHOD OF SURVEY AND CORNER AUTHENTICATION)

HARRISON MONUMENT RESET AFTER COMPLETION OF COUNTY HIGHWAY C RECONSTRUCTION PROJECT. LOCATION IS BASED ON THE EXISTING MONUMENT FOUND BEFORE CONSTRUCTION BEGAN.

8-11-08 KS-SS PLACED STEEL POST @ IRONS

SEE ATTACHED TIE SHEET ABK 1978

SEAL



SCOTT GROHOLSKI (RLS #2281)

1/21/00

DATE

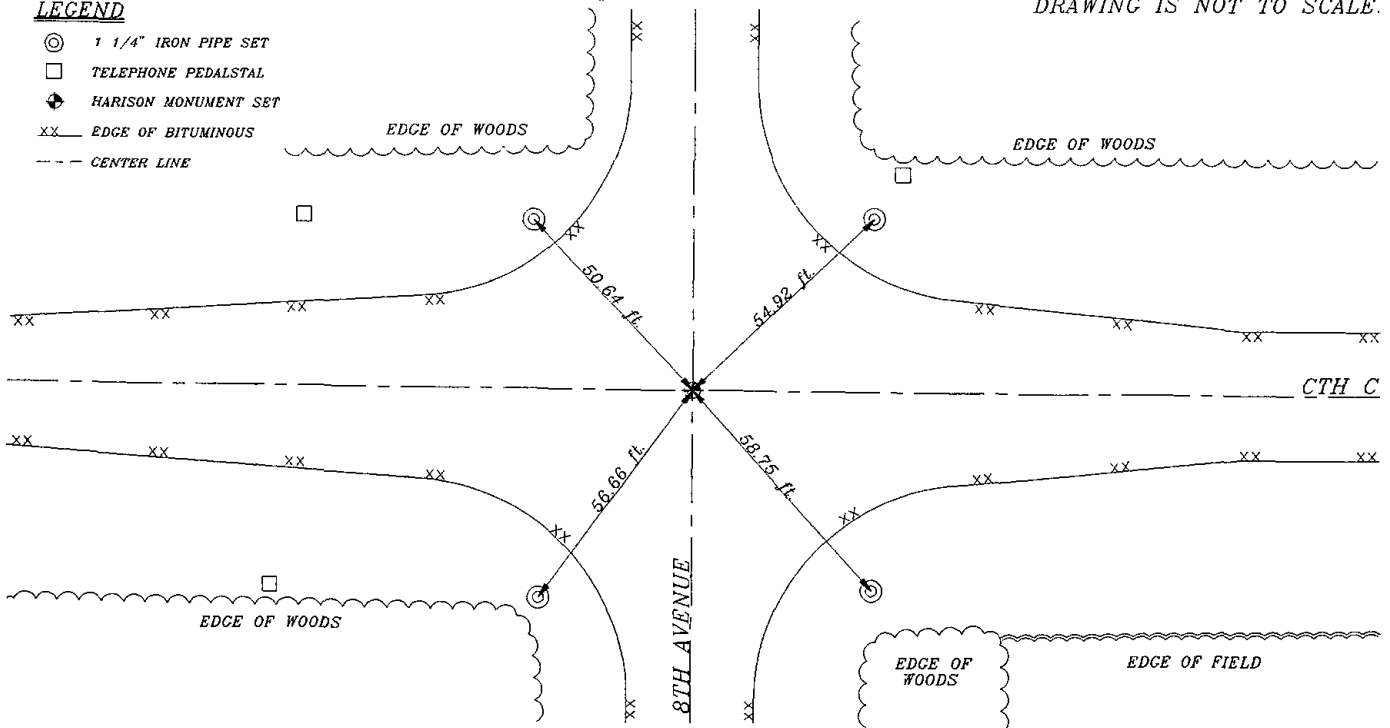
### TIE SKETCH:

SHOW MINIMUM OF FOUR (4) HORIZONTAL TIE DISTANCES TO FIXED WITNESS MONUMENTS. DESCRIBE ALL MONUMENTS FOUND OR SET. CORRECT ALL DISTANCES SHOWN TO STANDARD TEMPERATURE OF 68° F.

DRAWING IS NOT TO SCALE.

#### LEGEND

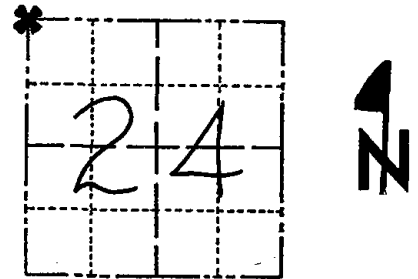
- ⊙ 1 1/4" IRON PIPE SET
- TELEPHONE PEDALSTAL
- ◆ HARRISON MONUMENT SET
- xx EDGE OF BITUMINOUS
- - - CENTER LINE



# Government Land Corner Certificate

Adams County  
 TYPE OF MONUMENT: Harrison Monument  
 STATE PLANE COORDINATES: N \_\_\_\_\_  
 E \_\_\_\_\_  
 ELEVATION — M.S.L. DATUM: \_\_\_\_\_  
 THETA ANGLE: \_\_\_\_\_  
 FIELD BOOK: 54 (101) PAGE 23 (98)  
 DRAWN BY: SCOTT SORENSEN

CORNER NO. 71<sup>71</sup>  
 SECTION 24  
 TOWN 19  
 RANGE 6



LOCATION  
(Indicated by 'X')

SEAL:



DATA SHOWN HERE ON  
CERTIFIED CORRECT:

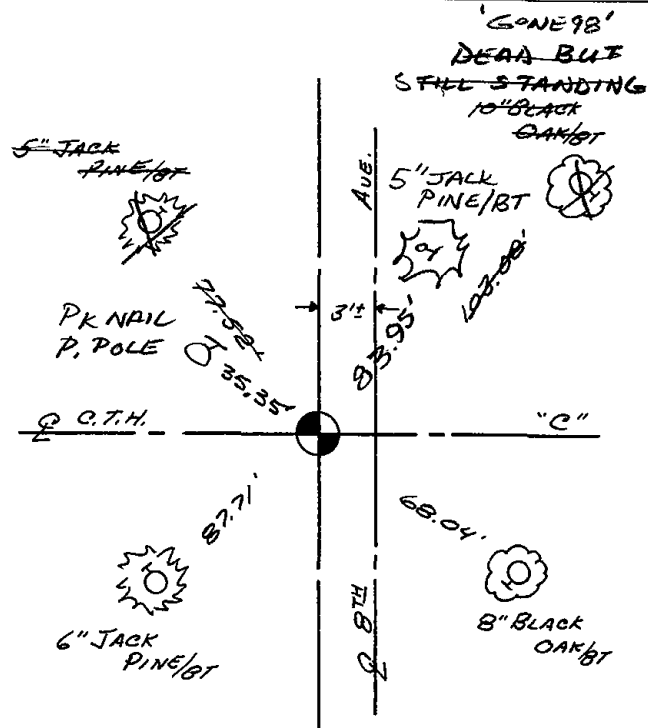
Anthony B. Kiedrowski  
Registered Land Surveyor

DATE 1/16/78

## TIE SKETCH

Show at least four ties, also fence lines, roads, topo, size and type of witness trees' and if off road - best way to arrive at corner.

Ties are to nail and disc.



## MAINTENANCE RECORD

Date	Init.	Remarks
11-27-78	RU-DA	OK
3-10-83	GR-SS	OK
10/5/92	JG	OK
2-13-98	JG	2-GONE, 2-NEW, MON. OK
SEE ATTACHED SHEET GROHOLSKI, 1/21/00		
1-24-03	JG	OK