

13
SECTION

19
TOWN

06
RANGE

ADAMS COUNTY

COUNTY CORNER NO: 72

ROMPORTOL ID: 41906130020

PUBLIC LAND SURVEY MONUMENT RECORD

TYPE OF MONUMENT: HARRISON
ADAMS COUNTY COORDINATES, NAD 83 (2007)

N. 271797.583

E. 554541.444

ELEVATION- DATUM

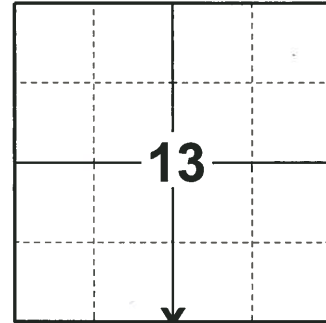
FIELD WORK DATE: 12/04/2018

BASIS FOR MONUMENT LOCATION

1977 - PLS 1103 R5AN EDM/T2 TRAVERSE AROUND SECTIONS 13 & 24, AND MANY ADJACENT SECTIONS. EXCAVATION WITH A BACKHOE BY ANTHONY KIEDROWSKI, ADAMS COUNTY SURVEYOR, YIELDED NO EVIDENCE OF THE ORIGINAL CORNER OR ANY REMONUMENTATION. FOUND NO EVIDENCE OF ANY REMONUMENTATION OR BEARING TREES. CALCULATED THE CORNER LOCATION BY SINGLE PROPORTIONATE MEASURE ON LINE BETWEEN ADJACENT SECTION CORNERS. SET A HARRISON MONUMENT AT THE CALCULATED LOCATION AND TIED OUT.

2000 - PLS 2281 HARRISON MONUMENT RESET AFTER COMPLETION OF COUNTY HIGHWAY C RECONSTRUCTION PROJECT. LOCATION IS BASED ON THE EXISTING MONUMENT FOUND BEFORE CONSTRUCTION BEGAN.

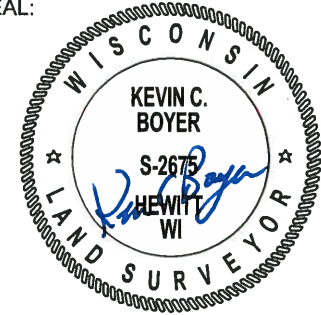
2018 - PLS 2675 FOUND A HARRISON MONUMENT 6" BELOW THE GRAVEL SHOULDER AND 4 TIES. THE MONUMENT AGREES WITH THE 2 OF THE 4 EXISTING TIES. ACCEPTED THE HARRISON MONUMENT AS THE CORNER LOCATION AND RE-MEASURED TO THE EXISTING TIES.



LOCATION

(INDICATE CORNER BY "X")

SEAL:



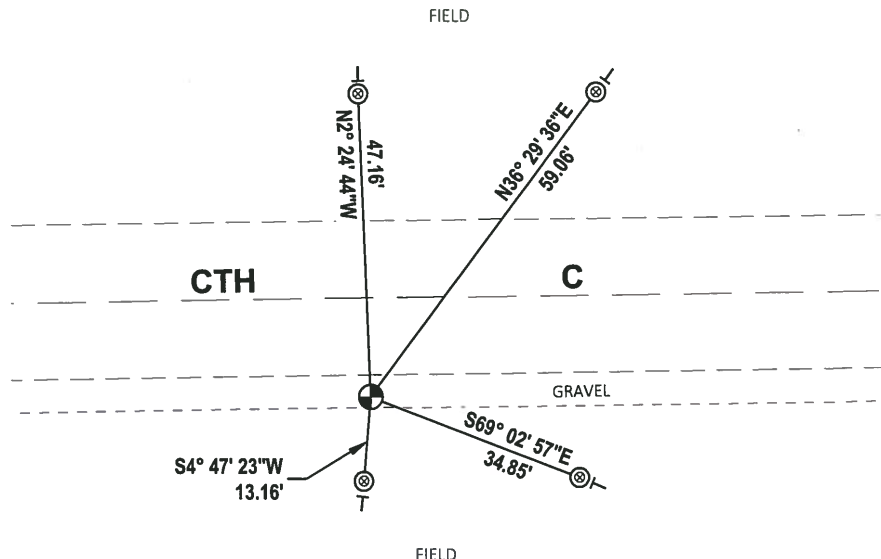
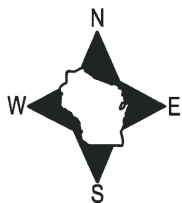
DATA SHOWN HERE ON THIS TIE SHEET IS CORRECT AND COMPLETE TO THE BEST OF MY KNOWLEDGE AND BELIEF.

PROFESSIONAL LAND SURVEYOR

DATE 1-18-19

TIE SKETCH

NOTE: THE CORNER FALLS 15'± SOUTH OF THE CENTERLINE OF CTH C.



- ⊗ FOUND 1-1/2" O.D. IRON PIPE
- ⊕ FOUND HARRISON MONUMENT
- | VINYL "T" POST

ADAMS COUNTY U.S. PUBLIC LAND SURVEY

MONUMENT LOCATION RECORD

LANDMARK BENCHMARK: _____
CORNER IDENTITY: SOUTH QUATER CONER

STATE PLANE COORDINATE: N: _____
E: _____

ZONE: _____

ELEVATION: _____

DATUM: _____

THETA ANGLE: _____

WEATHER: SUNNY/COLD TEMPERATURE: 58° F

DATE OF SURVEY: 11/4/99

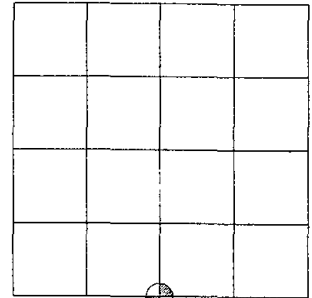
SURVEY PARTY: MARK HINTZ / CHRIS THORSON

- FOUND
- SET
- RE-SET
- RE-TIED



CORNER # (72)
SECTION 13
TOWNSHIP 19 NORTH
RANGE 6 EAST

SECTION 13



LOCATION

BASIS FOR MONUMENT LOCATION:

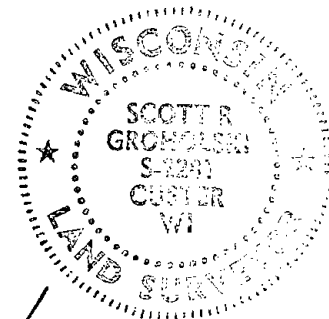
(DESCRIBE METHOD OF SURVEY AND CORNER AUTHENTICATION)

HARRISON MONUMENT RESET AFTER COMPLETION OF COUNTY HIGHWAY C RECONSTRUCTION PROJECT. LOCATION IS BASED ON THE EXISTING MONUMENT FOUND BEFORE CONSTRUCTION BEGAN.

SEE ATTACHED TIE SHEET- DALE HAGEN 1977

08-13-08 SET POSTS AT IRONS

SEAL



Scott R. Groholski

SCOTT GROHOLSKI (RLS #2281)

1/21/00

DATE

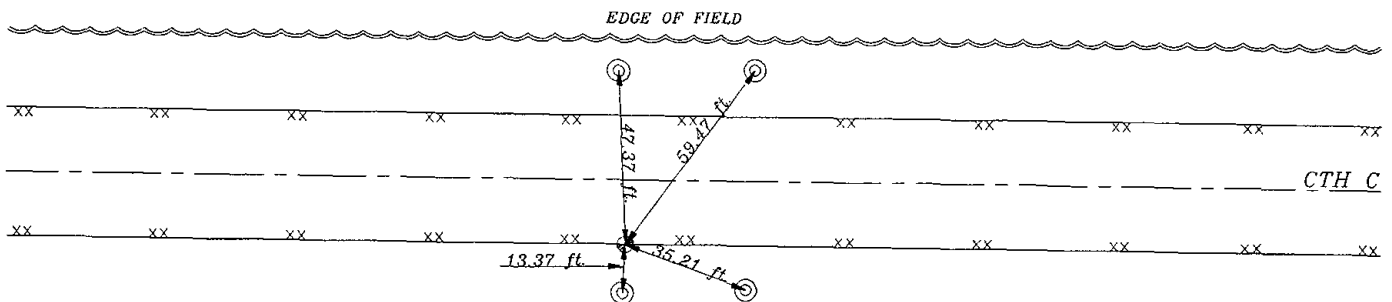
TIE SKETCH:

SHOW MINIMUM OF FOUR (4) HORIZONTAL TIE DISTANCES TO FIXED WITNESS MONUMENTS. DESCRIBE ALL MONUMENTS FOUND OR SET. CORRECT ALL DISTANCES SHOWN TO STANDARD TEMPERATURE OF 68° F.

DRAWING IS NOT TO SCALE.

LEGEND

- ⊙ 1 1/4" IRON PIPE SET
- ⊕ HARRISON MONUMENT SET
- XX... EDGE OF BITUMINOUS
- CENTER LINE

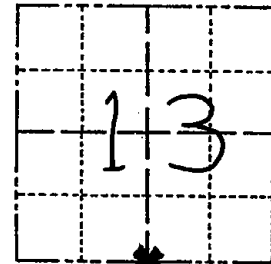


PETERSON FARM

Government Land Corner Certificate

ADAMS County
 TYPE OF MONUMENT: Harrison
 STATE PLANE COORDINATES: N _____
 E _____
 ELEVATION — M.S.L. DATUM: _____
 THETA ANGLE: _____
 FIELD BOOK: 54 PAGE 28
 DRAWN BY: SCOTT SORESEN

CORNER NO. 72
 SECTION 13
 TOWN 19
 RANGE 6



LOCATION
(Indicated by 'X')

BASIS FOR MONUMENT LOCATION

Show info such as: History of corner, with reference to Vol. and pg., dates, surveyor; exact description of monument replaced; if location computed, by taped or EDM traverse; landowner remarks, etc. (Use reverse side if necessary)

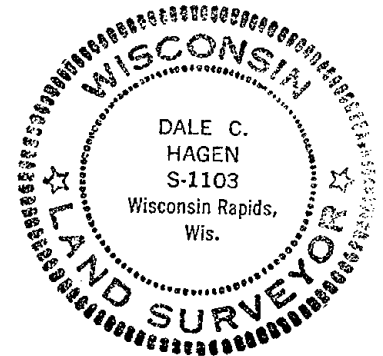
Ran EDM/T2 traverse around Sections 13 & 24, and many adjacent sections.

Excavation with backhoe by Anthony Kiedrowski, Adams County Surveyor, yielded no evidence of the original corner or any remonumentation. Could find no evidence of any remonumentation or bearing trees.

Relocated corner by single proportionate measure on line between adjacent section corners.

Set monument on 9-1-77.

SEAL:



DATA SHOWN HERE ON
CERTIFIED CORRECT:

Dale C. Hagen
Registered Land Surveyor

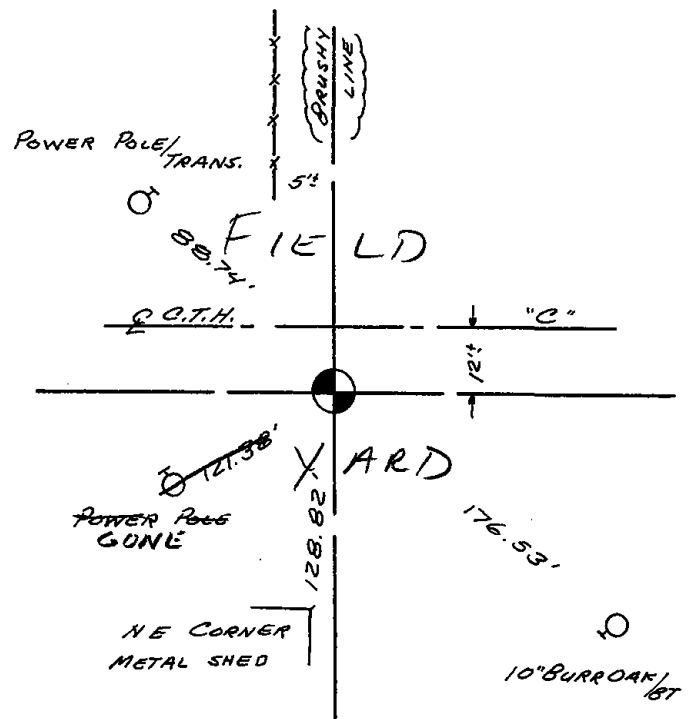
DATE: December 27, 1977

TIE SKETCH

Show at least four ties, also fence lines, roads, topo, size and type of witness trees' and if off road - best way to arrive at corner.

NOTE

Ties in trees to nail in disc.



MAINTENANCE RECORD

Date	Init.	Remarks
11-27-78	RN-AM	OK
3-11-83	GR-SS	OK
10/5/92	JG	1-TIE GONE
2-13-98	JG	OK
SEE ATTACHED SHEET, GROHOLSKI, 1/21/00		
1-24-03	JG	OK