

13 SECTION    19 TOWN    06 RANGE

# ADAMS COUNTY

COUNTY CORNER NO: 73

ROMPORTOL ID: 41906130000

## PUBLIC LAND SURVEY MONUMENT RECORD

TYPE OF MONUMENT: HARRISON (BROKEN-TOP)  
 ADAMS COUNTY COORDINATES, NAD 83 (2007)

N. 271820.821

E. 557172.484

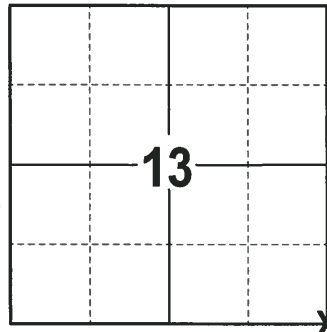
ELEVATION-      DATUM     

FIELD WORK DATE: 01/23/2018

### BASIS FOR MONUMENT LOCATION

1977 - PLS 1103 RAN EDM/T2 TRAVERSE AROUND SECTION 24 AND MANY ADJACENT SECTIONS TO DETERMINE THE SEARCH AREA FOR INVESTIGATION. THE SEARCH AREA FALLS WITHIN A CUT-SECTION OF A DITCH, SO NO EXCAVATION WAS DONE AT THAT LOCATION. ANTHONY KIEDROWSKI, COUNTY SURVEYOR, DID EXCAVATE AT THE CENTERLINE OF COUNTY TRUNK C TO CONFIRM THAT THE ROAD WAS NOT BUILT ON A SECTION LINE, BUT NOTHING WAS FOUND. ESTABLISHED THE CORNER BY SINGLE PROPORTIONATE MEASUREMENT BETWEEN THE SW CORNER OF SECTION 31-19-17 AND THE NW CORNER OF SECTION 18-19-7, WITH A PI AT THIS CORNER IN ORDER TO MATCH THE ONLY SUBSTANTIAL OCCUPATION ALONG THE RANGE LINE. SET A HARRISON MONUMENT AND TIED OUT.

2018 - PLS 2994 FOUND A HARRISON MONUMENT WITH A BROKEN-TOP 6" BELOW THE GROUND SURFACE AND 2 TIES. THE MONUMENT AGREES WITH THE EXISTING TIES. ACCEPTED THE HARRISON MONUMENT WITH A BROKEN-TOP AS THE CORNER LOCATION. SET 2 NEW TIES AND MEASURED TO THE TIES.



**LOCATION**  
(INDICATE CORNER BY "X")

SEAL:



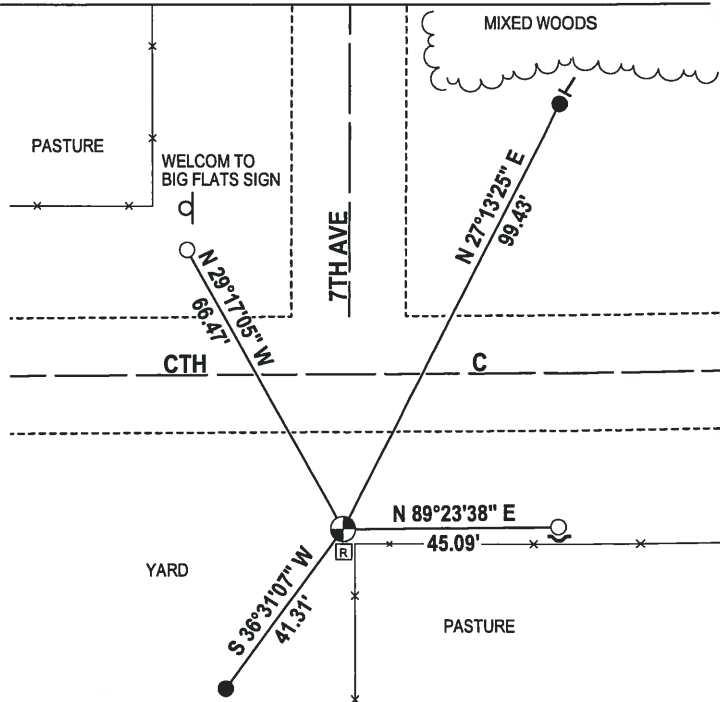
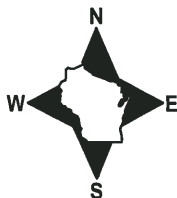
DATA SHOWN HERE ON THIS TIE SHEET IS CORRECT AND COMPLETE TO THE BEST OF MY KNOWLEDGE AND BELIEF.

PROFESSIONAL LAND SURVEYOR

DATE 3-1-18

### - TIE SKETCH

NOTE: THE CORNER FALLS 32± SOUTH OF THE CENTERLINE OF CTH C AND 3± WEST OF THE CENTERLINE OF 7TH AVE.

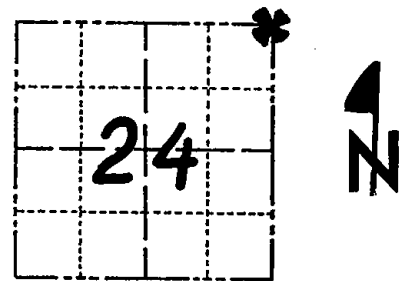


- 3/4" x 18" IRON REBAR SET, 1.50#/FT
- 3/4" IRON ROD FOUND
- ⊕ HARRISON (BROKEN-TOP) FOUND
- ⊠ RIGHT-OF-WAY GUARD POST
- ✓ STEEL FENCE POST
- └ VINYL "T" POST

# Government Land Corner Certificate

ADAMS County  
 TYPE OF MONUMENT: HARRISON STD.  
 STATE PLANE COORDINATES: N \_\_\_\_\_  
 E \_\_\_\_\_  
 ELEVATION — M.S.L. DATUM: \_\_\_\_\_  
 THETA ANGLE: \_\_\_\_\_  
 FIELD BOOK: 54 PAGE 33  
 DRAWN BY: SCOTT SORENSEN

CORNER NO. 73  
 SECTION 24  
 TOWN 19  
 RANGE 6



LOCATION  
(Indicated by 'X')

## BASIS FOR MONUMENT LOCATION

Show info such as: History of corner, with reference to Vol. and pg., dates, surveyor; exact description of monument replaced; if location computed, by taped or EDM traverse; landowner remarks, etc. (Use reverse side if necessary)

Ran EDM/12 traverse around Section 24 and many adjacent sections to determine search area for investigation.

Search area falls within cut-section of ditch, so no excavation was done at that location. Anthony Kiedrowski, County Surveyor, did excavate at centerline of County Trunk 'C' to confirm that Road was not built on section line, but nothing was found.

Relocated corner by single proportionate measure between SW of 31-19-7 and NW of 18-19-7, with PI at this corner in order to match the only substantial occupation along the range line.

Monument set 9-8-1977.

SEAL:



DATA SHOWN HERE ON CERTIFIED CORRECT:

*Dale C. Hagen*  
 Registered Land Surveyor

DATE: December 27, 1977

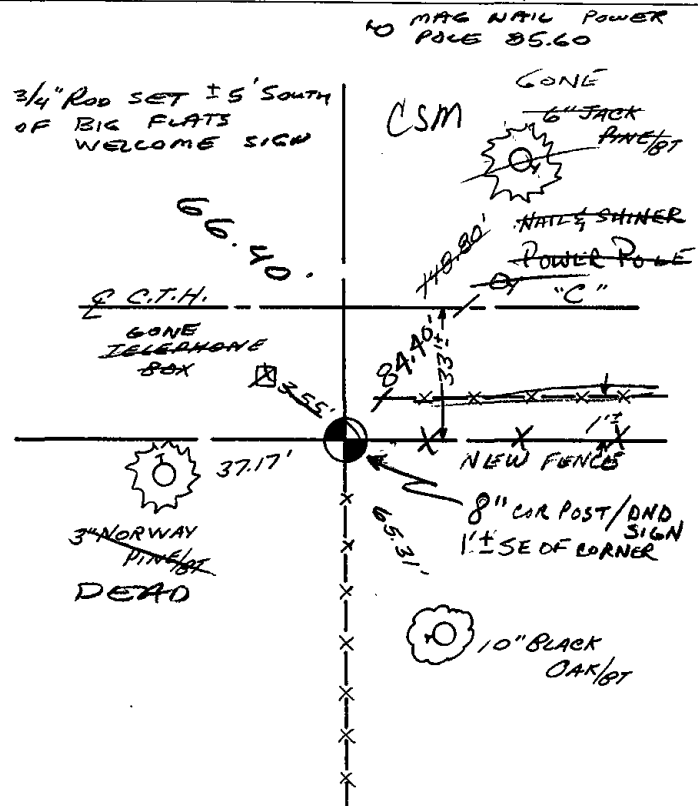
## TIE SKETCH

Show at least four ties, also fence lines, roads, topo, size and type of witness trees' and if off road - best way to arrive at corner.

### NOTE

Ties in trees to nail in disc.

08 3/4" Rod SET 45.0' EAST OF HARRISON TO 0.3' N. OF FENCE POST



## MAINTENANCE RECORD

Date	Init.	Remarks
11-27-78	RN-DA	OK
3-10-83	GR-SS	OK
10/5/92	JG	1-TIE GONE, 1-NEW TIE
2-13-98	JG	OK
1-24-03	JG	OK
8-13-08	KS-SS	3 NEW TIES