

19 SECTION 19 TOWN 06 RANGE

# ADAMS COUNTY

COUNTY CORNER NO: 75  
ROMPORTOL ID: 41906192000

## PUBLIC LAND SURVEY MONUMENT RECORD

TYPE OF MONUMENT: HARRISON  
ADAMS COUNTY COORDINATES, NAD 83 (2007)

N. 269062.997

E. 530802.692

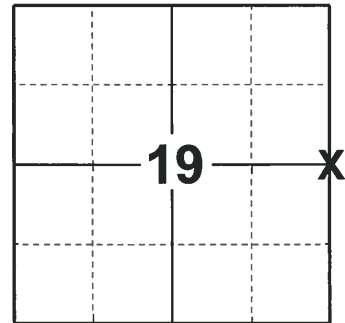
ELEVATION- - - - - DATUM - - - - -

FIELD WORK DATE: 12/11/2018

### BASIS FOR MONUMENT LOCATION

1971 - PLS 981 SET A HARRISON MONUMENT AND TIED OUT.

2018 - PLS 2675 FOUND A HARRISON MONUMENT 2" BELOW ROAD SURFACE AND 4 TIES. THE MONUMENT AGREES WITH ALL 4 TIES. ACCEPTED THE HARRISON MONUMENT AS THE CORNER LOCATION. SET 2 NEW TIES AND MEASURED TO THE TIES.



### LOCATION

(INDICATE CORNER BY "X")

SEAL:



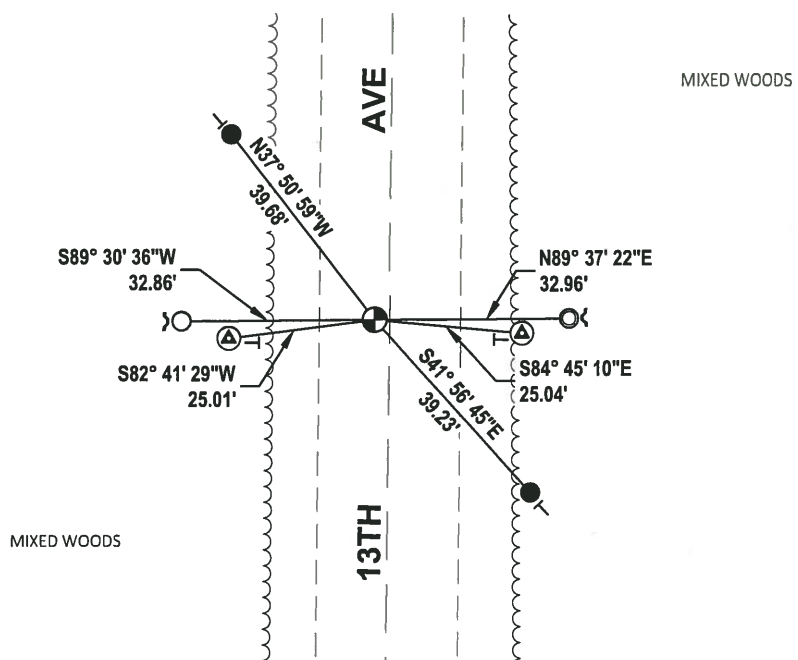
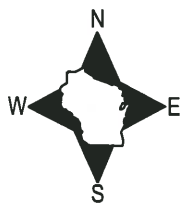
DATA SHOWN HERE ON THIS TIE SHEET IS CORRECT AND COMPLETE TO THE BEST OF MY KNOWLEDGE AND BELIEF.

PROFESSIONAL LAND SURVEYOR

DATE 1-18-19

### TIE SKETCH

NOTE: THE CORNER FALLS 2.5'± WEST OF THE CENTERLINE OF 13TH AVE.



- SET 3/4" x 18" IRON REBAR, 1.50#/FT
- FOUND 3/4" IRON ROD
- FOUND 1-1/4" O.D. IRON PIPE
- ⊙ FOUND CONCRETE MONUMENT
- ⊙ FOUND HARRISON MONUMENT
- ~ STEEL FENCE POST
- VINYL "T" POST

# ADAMS COUNTY

## Survey Monument Record

TYPE OF MONUMENT: 30" HARRISON

STATE PLANE COORDINATES: N \_\_\_\_\_  
E \_\_\_\_\_

ELEVATION — M.S.L. DATUM: \_\_\_\_\_

THETA ANGLE: \_\_\_\_\_

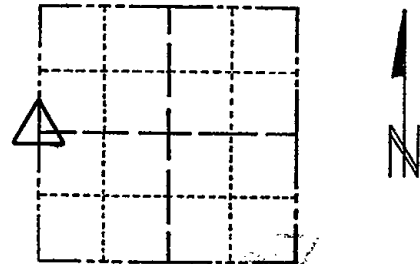
FIELD BOOK: 104 PAGE 80

CORNER NO. 49

SECTION 20

TOWN 19

RANGE 6



LOCATION  
(Indicated by 'X')

SEAL:

### BASIS FOR MONUMENT LOCATION

(Use reverse side if necessary)

Show info such as: History of corner, with reference to Vol. and pg, dates, surveyor; exact description of monument replaced; if location computed, by taped or EDM traverse; landowner remarks, etc.

Set monument

September 2, 1971

Sam T. Mullen R.L.S. S-981

OK 11-27-78 RD-DA  
 3-11-83 GR-SS 1 NEW TIE  
 OK 1-4-93 JG-BS  
 2-GONE, 2-NEW, MON. OK, 2-11-98 - JG  
 2-NEW, MON. OK, 12-30-02, - JG

CERTIFIED CORRECT:

Registered Land Surveyor

DATE: \_\_\_\_\_

### TIE SKETCH OK, 12-21-07 - JG-SS

(Show at least four ties)

