

22  
SECTION

19  
TOWN

06  
RANGE

# ADAMS COUNTY

COUNTY CORNER NO: 78

ROMPORTOL ID: 41906222000

## PUBLIC LAND SURVEY MONUMENT RECORD

TYPE OF MONUMENT: HARRISON  
ADAMS COUNTY COORDINATES, NAD 83 (2007)

N. 269130.346

E. 546592.841

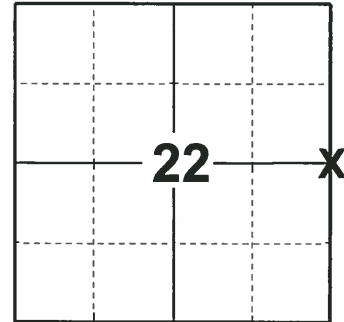
ELEVATION- \_\_\_\_\_ DATUM \_\_\_\_\_

FIELD WORK DATE: 12/10/2018

### BASIS FOR MONUMENT LOCATION

1971 - PLS 981 FOUND A IRON PIPE AND RESET THE CORNER WITH A HARRISON MONUMENT IN PLACE OF THE IRON PIPE. TIED OUT CORNER.

2018 - PLS 2675 FOUND A HARRISON MONUMENT 6" BELOW THE GROUND SURFACE. DID NOT RECOVER ANY OF THE EXISTING TIES OR WITNESSES, BELIEVED ALL TO BE DESTROYED DUE TO FIRE. ACCEPTED THE HARRISON MONUMENT AS THE BEST EVIDENCE OF THE CORNER LOCATION. SET 4 NEW TIES AND MEASURED TO THE TIES.



### LOCATION

(INDICATE CORNER BY "X")

SEAL:



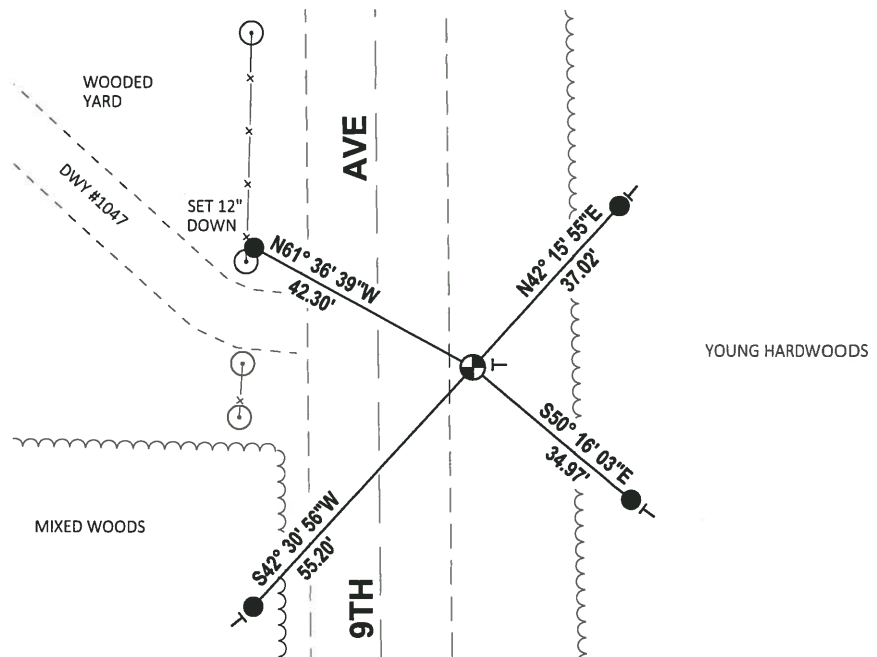
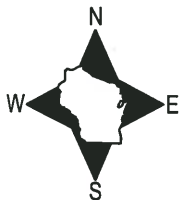
DATA SHOWN HERE ON THIS TIE SHEET IS CORRECT AND COMPLETE TO THE BEST OF MY KNOWLEDGE AND BELIEF.

PROFESSIONAL LAND SURVEYOR

DATE 1-18-19

### TIE SKETCH

NOTE: THE CORNER FALLS 16'± EAST OF THE CENTERLINE OF 9TH AVE.



ADAMS COUNTY

Survey Monument Record

TYPE OF MONUMENT: 30" HARRISON

STATE PLANE COORDINATES: N \_\_\_\_\_

E \_\_\_\_\_

ELEVATION — M.S.L. DATUM: \_\_\_\_\_

THETA ANGLE: \_\_\_\_\_

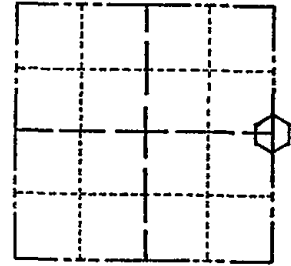
FIELD BOOK: 104 PAGE 68

CORNER NO. 35

SECTION 22

TOWN 19

RANGE 6



LOCATION (Indicated by 'X')

SEAL:

BASIS FOR MONUMENT LOCATION

(Use reverse side if necessary)

Show info such as: History of corner, with reference to Vol. and pg. dates, surveyor; exact description of monument replaced; if location computed, by taped or EDM traverse; landowner remarks, etc.

Found iron pipe and set monument

August 12, 1971

Sam T. Mullen R.L.S. S-981

OK 11-28-78 RW-DA  
3-10-83 GR-SS OK  
OK-10/5/92-JG  
OK, 2-13-98-JG  
OK, 1-24-03-JG

CERTIFIED CORRECT:

Registered Land Surveyor

DATE: \_\_\_\_\_

TIE SKETCH <sup>2 DEAD, 12-17-07, JG-SS</sup>

(Show at least four ties)

