

PUBLIC LAND SURVEY MONUMENT RECORD

TYPE OF MONUMENT: HARRISON
ADAMS COUNTY COORDINATES, NAD 83 (2007)

N. 269172.623

E. 551888.324

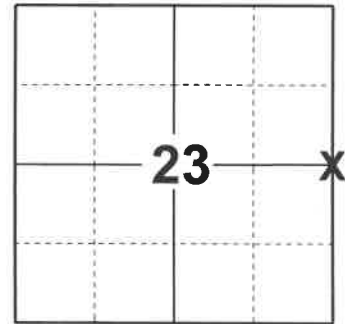
ELEVATION- DATUM

FIELD WORK DATE: 12/10/2018

BASIS FOR MONUMENT LOCATION

1977 - PLS 878 FOUND REMAINS OF 4" CHARCOALED STAKE DOWN INTO SUBSOIL AT LEAST 12" DURING EXCAVATION WITH BACKHOE IN SEARCH AREA THAT WAS DETERMINED AFTER ANALYSIS OF EXTENSIVE TRAVERSE OF SURROUNDING SECTIONS. RE-MONUMENTED POST WITH STANDARD HARRISON MONUMENT.

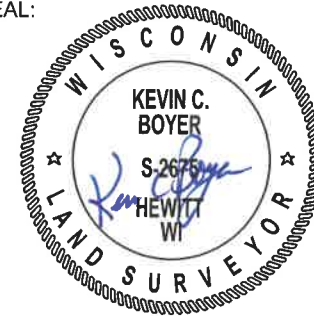
2018 - PLS 2675 FOUND A HARRISON MONUMENT 4" BELOW THE ROAD SURFACE AND 2 TIES. THE MONUMENT AGREES WITH THE EXISTING TIES. ACCEPTED THE HARRISON MONUMENT AS THE CORNER LOCATION. SET 2 NEW TIES AND MEASURED TO THE TIES.



LOCATION

(INDICATE CORNER BY "X")

SEAL:



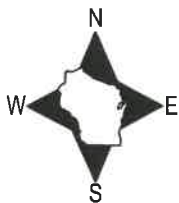
DATA SHOWN HERE ON THIS TIE SHEET IS CORRECT AND COMPLETE TO THE BEST OF MY KNOWLEDGE AND BELIEF.

PROFESSIONAL LAND SURVEYOR

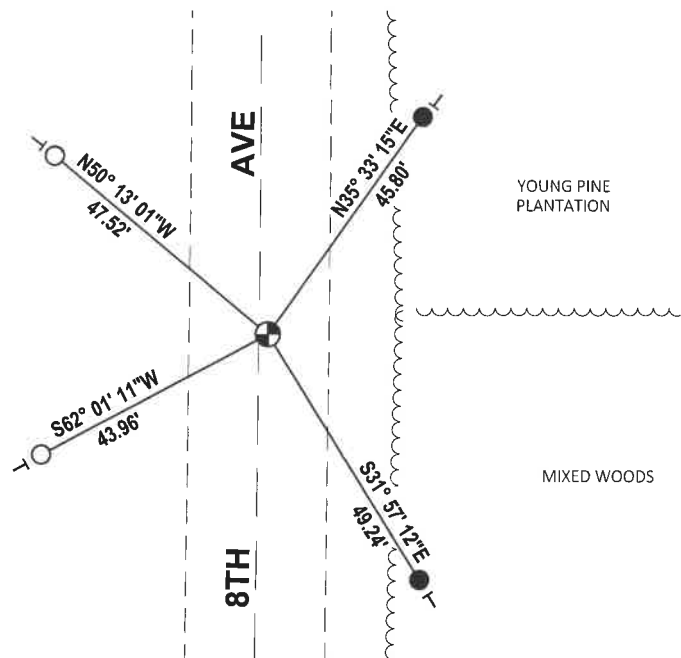
DATE 1-18-19

- TIE SKETCH

NOTE: THE CORNER FALLS 2'± EAST OF THE CENTERLINE OF 8TH AVE.



YOUNG PINE PLANTATION



- SET 3/4" x 18" IRON REBAR, 1.50#/FT
- FOUND 3/4" IRON ROD
- ⊕ FOUND HARRISON MONUMENT
- VINYL "T" POST

ADAMS COUNTY

Survey Monument Record

TYPE OF MONUMENT: HARRISON STANDARD

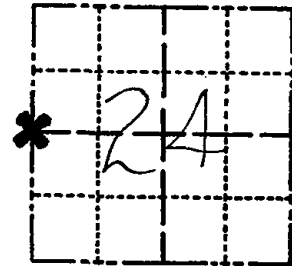
STATE PLANE COORDINATES: N _____
E _____

ELEVATION — M.S.L. DATUM: _____

THETA ANGLE: _____

FIELD BOOK: 54 PAGE 12

CORNER NO. 79
SECTION 24
TOWN 19
RANGE 6



LOCATION
(Indicated by 'X')

SEAL:

BASIS FOR MONUMENT LOCATION

(Use reverse side if necessary)

Show info such as: History of corner, with reference to Vol. and pg, dates, surveyor; exact description of monument replaced; if location computed, by taped or EDM traverse; landowner remarks, etc.

Found remains of 4" charcoaled stake down into subsoil at least 12" during excavation with backhoe in search area that was determined after analysis of extensive traverse of surrounding sectiond. 6-28-77

Monumented post with standard Harrison monument.



- OK 11-27-78 RN-DA
- 3-10-83 GR-SS OK
- OK - 10/5/92 - JG
- OK, 2-13-98 - JG
- 2-GONE, 2-NEW, MON. OK, 1-28-03 - JG

CERTIFIED CORRECT:

Anthony B. Kiedrowski
Registered Land Surveyor

DATE: 9/6/77

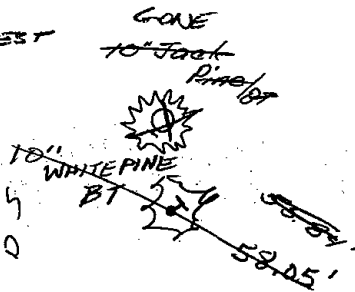
TIE SKETCH

2 NEW TIES 8-13-08 RS-SS

(Show at least four ties)

BEARING TREES WEST ARE DESTROYED

SET 3/4" ROD
47.55' NW -
10' W. of ONE



SET 3/4" ROD
44.00' SW
10' W. of ONE

